

Sacramento County
Summary Trauma Report
January Through December 2012

March 15, 2013

Based on Trauma Registry Data
Provided By
Kaiser Hospital South Sacramento
Mercy San Juan Medical Center
Sutter Roseville Medical Center
and UC Davis Medical Center

Prepared For
Sacramento County EMS Agency
9616 Micron Avenue, Suite 635
Sacramento, CA 95827
(916) 875-9753

By



(916) 488-3222

Notes Regarding
January Through December 2012
Summary Trauma Report

1. UC Davis Medical Center records submitted with a Mode of Arrival of Public Safety were changed so that the Mode of Arrival would be reported as Ambulance rather than Public Safety, because UCDCMC uses the Public Safety value to indicate Fire Ambulance.

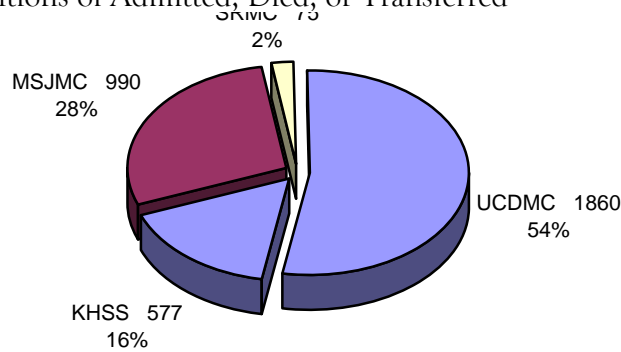
2. This report includes all patients from geographic Sacramento County who met trauma triage criteria, with one of the following Emergency Department Dispositions:
 - > Admitted
 - > Died in ED
 - > Transferred To Another Acute Care Facility From ED

In order to provide like information for the three trauma centers, other patient records submitted were not included in this report.

Trauma Patient Volume for Sacramento County Trauma Centers
 January Through December 2012
 For Patients with ED Dispositions of Admitted, Died, or Transferred

	1 st Qtr	2 nd Qtr	3 rd Qtr	4 th Qtr	All Quarters
Kaiser Hospital South Sacramento					
Admitted	131	163	166	97	557
Died in ED	1	1	3	2	7
Transferred To Another Acute Care Facility From ED	6	4	3	0	13
Subtotal for KHSS	138	168	172	99	577
Mercy San Juan Medical Center					
Admitted	225	259	254	225	963
Died in ED	5	3	4	3	15
Transferred To Another Acute Care Facility From ED	2	7	2	1	12
Subtotal for MSJMC	232	269	260	229	990
Sutter Roseville Medical Center					
Admitted	9	25	19	21	74
Died in ED	0	0	0	0	0
Transferred To Another Acute Care Facility From ED	0	0	0	1	1
Subtotal for SRMC	9	25	19	22	75
UC Davis Medical Center					
Admitted	410	448	535	443	1,836
Died in ED	5	4	7	8	24
Transferred To Another Acute Care Facility From ED	0	0	0	0	0
Subtotal for UCDMC	415	452	542	451	1,860
Totals for Sacramento County	794	914	993	801	3,502

Trauma Patient Volume for Sacramento County Trauma Centers
 January Through December 2012
 For Patients with ED Dispositions of Admitted, Died, or Transferred



Trauma Patient Injury Type

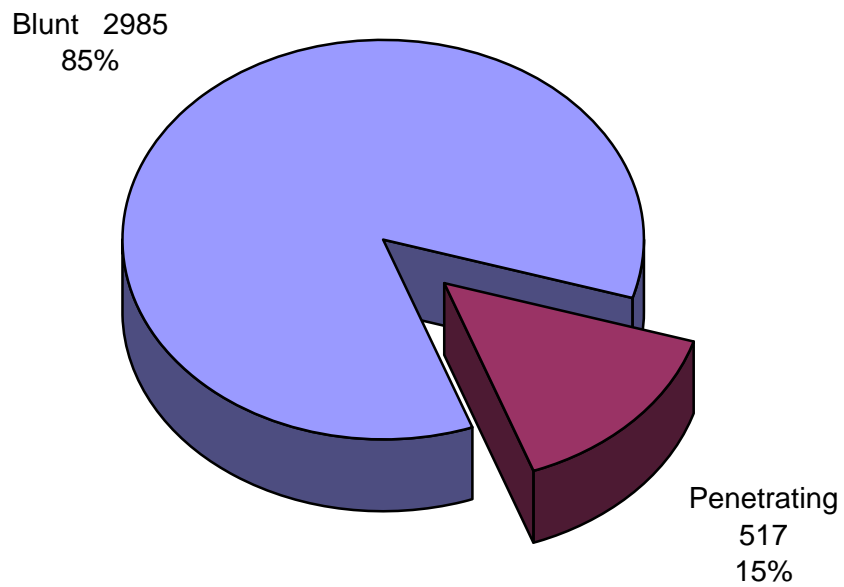
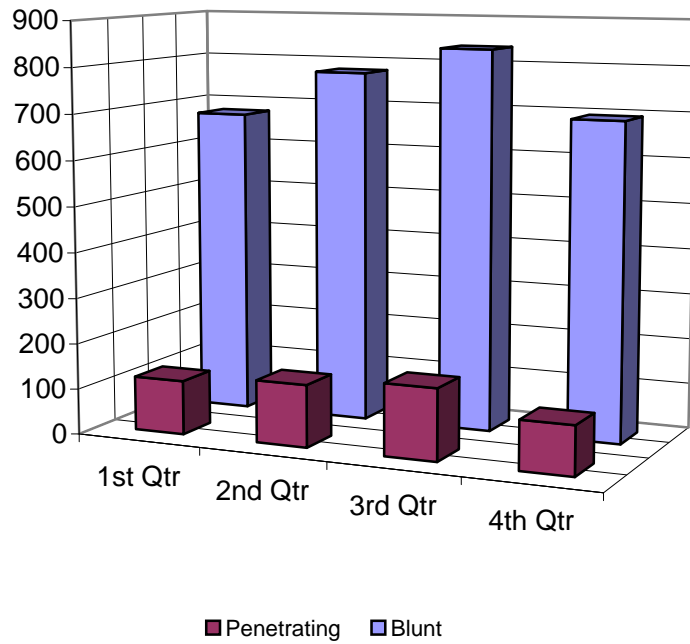
January Through December 2012

For Patients with ED Dispositions of Admitted, Died, or Transferred

	1 st Qtr	2 nd Qtr	3 rd Qtr	4 th Qtr	All Quarters
Kaiser Hospital South Sacramento					
Blunt Injury	114	140	144	82	480
Penetrating Injury	24	28	28	17	97
Subtotal for KHSS	138	168	172	99	577
Mercy San Juan Medical Center					
Blunt Injury	202	240	222	209	873
Penetrating Injury	30	29	38	20	117
Subtotal for MSJMC	232	269	260	229	990
Sutter Roseville Medical Center					
Blunt Injury	9	22	18	19	68
Penetrating Injury	0	3	1	3	7
Subtotal for SRMC	9	25	19	22	75
UC Davis Medical Center					
Blunt Injury	351	376	453	384	1,564
Penetrating Injury	64	76	89	67	296
Subtotal for UCDCMC	415	452	542	451	1,860
Totals for Sacramento County	794	914	993	801	3,502

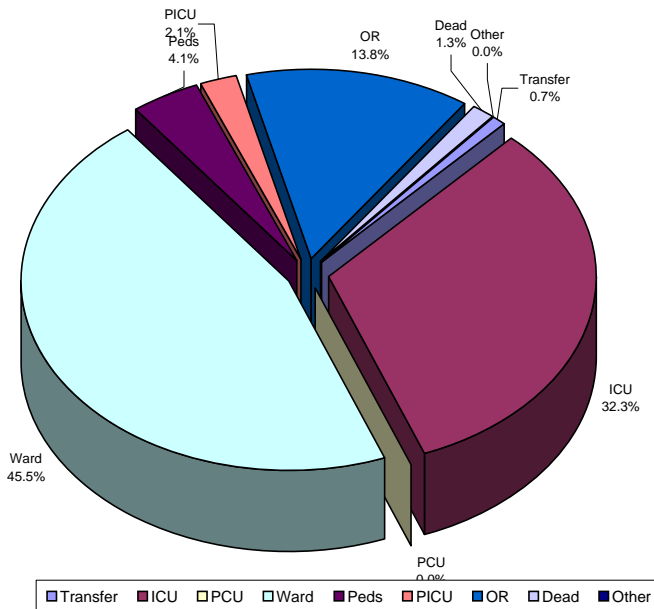
Trauma Patient Injury Type January Through December 2012

For Patients with ED Dispositions of Admitted, Died, or Transferred



Trauma Patient Emergency Department Disposition
 January Through December 2012
 For Patients with ED Dispositions of Admitted, Died, or Transferred

	Transfer	ICU	PCU	Ward	Peds	PICU	OR	Dead	Other	Total
Kaiser Hospital South Sacramento										
1 st Qtr	6	53	0	51	0	0	27	1	0	138
2 nd Qtr	4	42	0	83	0	0	38	1	0	168
3 rd Qtr	3	60	0	73	0	0	33	3	0	172
4 th Qtr	0	31	0	39	0	0	27	2	0	99
All Qtrs	13	186	0	246	0	0	125	7	0	577
Mercy San Juan Hospital										
1 st Qtr	2	78	0	120	1	0	26	5	0	232
2 nd Qtr	7	112	1	113	4	0	29	3	0	269
3 rd Qtr	2	98	0	118	9	0	29	4	0	260
4 th Qtr	1	100	0	99	3	0	23	3	0	229
All Qtrs	12	388	1	450	17	0	107	15	0	990
Sutter Roseville Medical Center										
1 st Qtr	0	8	0	1	0	0	0	0	0	9
2 nd Qtr	0	14	0	5	0	0	6	0	0	25
3 rd Qtr	0	16	0	2	0	0	1	0	0	19
4 th Qtr	1	12	0	5	0	0	4	0	0	22
All Qtrs	1	50	0	13	0	0	11	0	0	75
UC Davis Medical Center										
1 st Qtr	0	97	0	209	17	23	64	5	0	415
2 nd Qtr	0	130	0	217	31	18	52	4	0	452
3 rd Qtr	0	136	0	260	52	17	70	7	0	542
4 th Qtr	0	145	0	200	28	15	55	8	0	451
All Qtrs	0	508	0	886	128	73	241	24	0	1,860
Totals	26	1,132	1	1,595	145	73	484	46	0	3,502



Admitted Trauma Patient Final Disposition
 January Through December 2012
 For Admitted Patients

	Unknown	Home	Home Health	SNF	ICF	Rehab	Transfer	Dead	Other	Total
Kaiser Hospital South Sacramento										
1 st Qtr	0	97	4	10	0	4	4	4	8	131
2 nd Qtr	0	124	7	18	0	1	5	5	3	163
3 rd Qtr	0	126	2	13	0	3	8	5	9	166
4 th Qtr	0	69	3	13	0	1	1	6	4	97
All Qtrs	0	416	16	54	0	9	18	20	24	557
Mercy San Juan Medical Center										
1 st Qtr	0	132	13	35	0	8	19	7	11	225
2 nd Qtr	0	181	15	22	0	7	17	7	10	259
3 rd Qtr	0	183	8	29	0	3	8	10	13	254
4 th Qtr	2	147	15	19	0	8	16	5	13	225
All Qtrs	2	643	51	105	0	26	60	29	47	963
Sutter Roseville Medical Center										
1 st Qtr	0	9	0	0	0	0	0	0	0	9
2 nd Qtr	0	18	0	2	0	2	1	2	0	25
3 rd Qtr	0	13	0	0	0	0	4	1	1	19
4 th Qtr	0	12	0	2	0	2	3	1	1	21
All Qtrs	0	52	0	4	0	4	8	4	2	74
UC Davis Medical Center										
1 st Qtr	0	307	5	26	0	2	32	9	29	410
2 nd Qtr	0	356	2	25	0	5	21	9	30	448
3 rd Qtr	0	423	3	25	0	8	31	12	33	535
4 th Qtr	0	332	7	31	0	7	21	7	38	443
All Qtrs	0	1,418	17	107	0	22	105	37	130	1,836
Totals	2	2,529	84	270	0	61	191	90	203	3,430

Trauma Patient Mechanism of Injury
 January Through December 2012
 For Patients with ED Dispositions of Admitted, Died, or Transferred

	Unk	MVC	MCC	Pedes	GSW	SW	Fall	Assault	Bike	Other	Total
Kaiser Hospital South Sacramento											
1 st Qtr	7	33	7	10	7	9	48	3	5	9	138
2 nd Qtr	4	41	23	8	12	5	38	10	10	17	168
3 rd Qtr	6	53	10	6	17	4	42	10	14	10	172
4 th Qtr	4	29	6	6	10	4	30	6	2	2	99
All Qtrs	21	156	46	30	46	22	158	29	31	38	577
Mercy San Juan Medical Center											
1 st Qtr	14	61	8	10	7	9	75	21	16	11	232
2 nd Qtr	3	49	25	5	10	9	86	28	27	27	269
3 rd Qtr	10	42	24	5	9	14	91	22	23	20	260
4 th Qtr	7	49	14	18	8	8	75	18	18	14	229
All Qtrs	34	201	71	38	34	40	327	89	84	72	990
Sutter Roseville Medical Center											
1 st Qtr	0	1	2	0	0	0	4	1	0	1	9
2 nd Qtr	2	2	1	0	0	2	9	2	4	3	25
3 rd Qtr	1	3	5	0	0	1	7	1	0	1	19
4 th Qtr	0	4	1	1	2	1	8	0	2	3	22
All Qtrs	3	10	9	1	2	4	28	4	6	8	75
UC Davis Medical Center											
1 st Qtr	8	100	21	31	26	22	120	39	23	25	415
2 nd Qtr	6	82	27	22	27	34	135	57	36	26	452
3 rd Qtr	8	126	30	18	27	39	145	53	59	37	542
4 th Qtr	3	86	21	40	27	24	148	51	26	25	451
All Qtrs	25	394	99	111	107	119	548	200	144	113	1,860
Totals	83	761	225	180	189	185	1,061	322	265	231	3,502

Trauma Patient Death by Mechanism of Injury
 January Through December 2012
 For Patients with ED Dispositions of Admitted or Died

	Unk	MVC	MCC	Pedes	GSW	SW	Fall	Assault	Bike	Other	Total
Died in ED	3	7	3	4	18	0	7	0	3	1	46
Died after Admission	5	13	2	8	11	0	34	5	10	2	90
Total	8	20	5	12	29	0	41	5	13	3	136

Trauma Patient Mechanism of Injury by Age Group
 January Through December 2012
 For Patients with ED Dispositions of Admitted, Died, or Transferred

	Unk	MVC	MCC	Pedes	GSW	SW	Fall	Assault	Bike	Other	Total
<5 years	4	10	2	10	2	0	62	4	2	14	110
5-14 years	4	25	5	14	1	2	62	6	40	31	190
15-18 years	4	51	11	12	24	15	20	14	22	29	202
19-44 years	49	368	126	64	142	128	136	179	82	105	1,379
45-64 years	16	179	66	59	16	36	284	99	98	41	894
>64 years	6	128	15	21	4	4	497	20	21	11	727
Total	83	761	225	180	189	185	1,061	322	265	231	3,502

Trauma Patient Age Groups
January Through December 2012

For Patients with ED Dispositions of Admitted, Died, or Transferred

	Unk	<5 years	5-14 years	15-18 years	19-44 years	45-64 years	>64 years	Total
Kaiser Hospital South Sacramento								
1 st Qtr	0	3	5	11	57	31	31	138
2 nd Qtr	0	2	3	15	66	41	41	168
3 rd Qtr	0	2	7	11	70	52	30	172
4 th Qtr	0	0	0	6	41	24	28	99
All Qtrs	0	7	15	43	234	148	130	577
Mercy San Juan Medical Center								
1 st Qtr	0	1	4	14	83	66	64	232
2 nd Qtr	0	2	8	16	112	76	55	269
3 rd Qtr	0	7	7	14	111	65	56	260
4 th Qtr	0	6	5	10	93	68	47	229
All Qtrs	0	16	24	54	399	275	222	990
Sutter Roseville Medical Center								
1 st Qtr	0	0	0	1	4	3	1	9
2 nd Qtr	0	0	0	2	6	7	10	25
3 rd Qtr	0	0	0	1	9	4	5	19
4 th Qtr	0	0	0	2	8	4	8	22
All Qtrs	0	0	0	6	27	18	24	75
UC Davis Medical Center								
1 st Qtr	0	23	29	21	164	93	85	415
2 nd Qtr	0	18	39	22	186	110	77	452
3 rd Qtr	0	27	50	32	212	128	93	542
4 th Qtr	0	19	33	24	157	122	96	451
All Qtrs	0	87	151	99	719	453	351	1,860
Totals	0	110	190	202	1,379	894	727	3,502

Trauma Patient Mode of Arrival
January Through December 2012

For Patients with ED Dispositions of Admitted, Died, or Transferred

	Unk	Ambulance	Helicopter	Police	Private Vehicle	Walk-In	Total
Kaiser Hospital South Sacramento							
1 st Qtr	1	106	2	0	29	0	138
2 nd Qtr	0	134	1	0	33	0	168
3 rd Qtr	0	139	2	0	31	0	172
4 th Qtr	0	73	3	0	23	0	99
All Qtrs	1	452	8	0	116	0	577
Mercy San Juan Medical Center							
1 st Qtr	0	197	0	1	23	11	232
2 nd Qtr	1	221	1	0	13	33	269
3 rd Qtr	0	214	0	0	8	38	260
4 th Qtr	0	184	0	1	4	40	229
All Qtrs	1	816	1	2	48	122	990
Sutter Roseville Medical Center							
1 st Qtr	0	6	0	0	3	0	9
2 nd Qtr	0	18	0	0	7	0	25
3 rd Qtr	0	17	0	0	2	0	19
4 th Qtr	0	18	0	0	4	0	22
All Qtrs	0	59	0	0	16	0	75
UC Davis Medical Center							
1 st Qtr	0	378	2	0	30	5	415
2 nd Qtr	0	394	3	0	51	4	452
3 rd Qtr	0	481	5	0	47	9	542
4 th Qtr	0	397	3	0	45	6	451
All Qtrs	0	1,650	13	0	173	24	1,860
Totals	2	2,977	22	2	353	146	3,502

	Volume	Injury Type	ED Dispo	Final Dispo	MOI	Death by MOI
Totals on All Sheets	3,502	3,502	3,502		3,502	
Differences	0	0	0		0	
Died in ED	46		46			46
Differences	0		0			0
Died After Admission				90		90
Differences				0		0
Final Disposition			3,430	3,430		
Differences			0	0		
Transfers by Hospital Transfers						
KHSS	13					
MSJMC	12					
SRMC	1					
UCDMC	0					

MOI by Age	Age Groups	MOA
3,502 0	3,502 0	3,502 0