

Sacramento County
Summary Trauma Report
January Through December 2009

March 24, 2010

Based on Trauma Registry Data
Provided By
Kaiser Hospital South Sacramento
Mercy San Juan Medical Center
Sutter Roseville Medical Center
and UC Davis Medical Center

Prepared For
Sacramento County EMS Agency
9616 Micron Avenue, Suite 635
Sacramento, CA 95827
(916) 875-9753

By



(916) 488-3222

Notes Regarding
January Through December 2009
Summary Trauma Report

1. UC Davis Medical Center records submitted with a Mode of Arrival of Public Safety were changed so that the Mode of Arrival would be reported as Ambulance rather than Public Safety, because UCDCMC uses the Public Safety value to indicate Fire Ambulance.

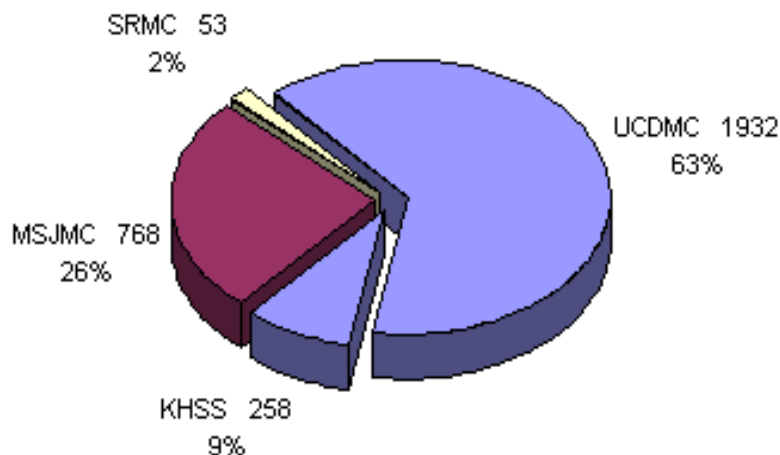
2. This report includes all patients from geographic Sacramento County who met trauma triage criteria, with one of the following Emergency Department Dispositions:
 - > Admitted
 - > Died in ED
 - > Transferred To Another Acute Care Facility From ED

In order to provide like information for the three trauma centers, other patient records submitted were not included in this report.

Trauma Patient Volume for Sacramento County Trauma Centers January Through December 2009

For Patients with ED Dispositions of Admitted, Died, or Transferred

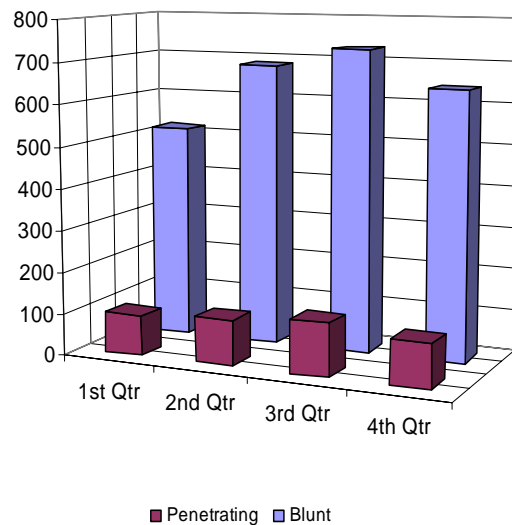
	1 st Qtr	2 nd Qtr	3 rd Qtr	4 th Qtr	All Quarters
Kaiser Hospital South Sacramento					
Admitted	0	0	111	134	245
Died in ED	0	0	1	2	3
Transferred To Another Acute Care Facility From ED	0	0	5	5	10
Subtotal for KHSS	0	0	117	141	258
Mercy San Juan Medical Center					
Admitted	158	213	204	166	741
Died in ED	4	7	2	4	17
Transferred To Another Acute Care Facility From ED	8	2	0	0	10
Subtotal for MSJMC	170	222	206	170	768
Sutter Roseville Medical Center					
Admitted	10	15	9	17	51
Died in ED	0	1	0	0	1
Transferred To Another Acute Care Facility From ED	0	1	0	0	1
Subtotal for SRMC	10	17	9	17	53
UC Davis Medical Center					
Admitted	430	544	519	414	1,907
Died in ED	5	10	4	6	25
Transferred To Another Acute Care Facility From ED	0	0	0	0	0
Subtotal for UCDCMC	435	554	523	420	1,932
Totals for Sacramento County	615	793	855	748	3,011



Trauma Patient Injury Type January Through December 2009

For Patients with ED Dispositions of Admitted, Died, or Transferred

	1 st Qtr	2 nd Qtr	3 rd Qtr	4 th Qtr	All Quarters
Kaiser Hospital South Sacramento					
Blunt Injury	0	0	100	124	224
Penetrating Injury	0	0	17	17	34
Subtotal for KHSS	0	0	117	141	258
Mercy San Juan Medical Center					
Blunt Injury	154	200	179	151	684
Penetrating Injury	16	22	27	19	84
Subtotal for MSJMC	170	222	206	170	768
Sutter Roseville Medical Center					
Blunt Injury	10	17	9	16	52
Penetrating Injury	0	0	0	1	1
Subtotal for SRMC	10	17	9	17	53
UC Davis Medical Center					
Blunt Injury	355	467	440	351	1,613
Penetrating Injury	80	87	83	69	319
Subtotal for UCDCMC	435	554	523	420	1,932
Totals for Sacramento County	615	793	855	748	3,011

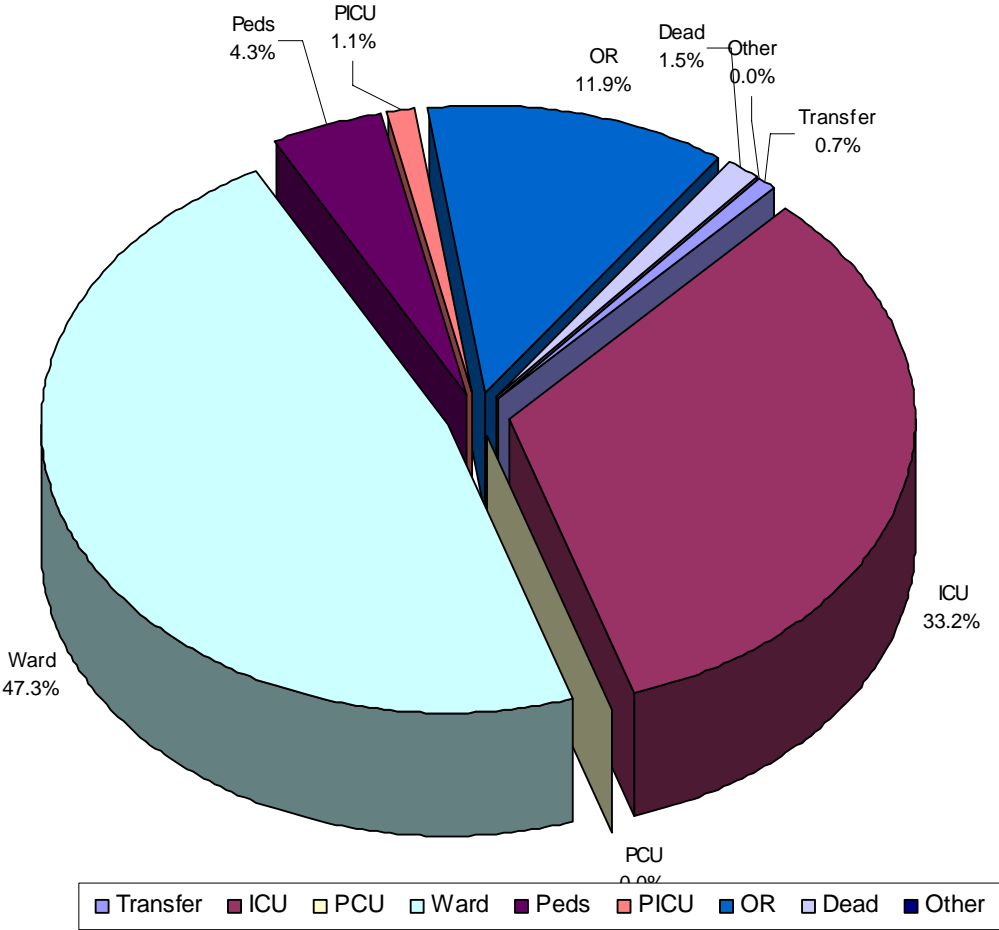


Trauma Patient Emergency Department Disposition January Through December 2009

For Patients with ED Dispositions of Admitted, Died, or Transferred

	Transfer	ICU	PCU	Ward	Peds	PICU	OR	Dead	Other	Total
Kaiser Hospital South Sacramento										
1 st Qtr	0	0	0	0	0	0	0	0	0	0
2 nd Qtr	0	0	0	0	0	0	0	0	0	0
3 rd Qtr	5	41	0	51	0	0	19	1	0	117
4 th Qtr	5	36	0	74	0	0	24	2	0	141
All Qtrs	10	77	0	125	0	0	43	3	0	258
Mercy San Juan Hospital										
1 st Qtr	8	70	0	68	1	0	19	4	0	170
2 nd Qtr	2	98	0	94	1	0	20	7	0	222
3 rd Qtr	0	110	0	71	0	0	23	2	0	206
4 th Qtr	0	98	0	48	0	0	20	4	0	170
All Qtrs	10	376	0	281	2	0	82	17	0	768
Sutter Roseville Medical Center										
1 st Qtr	0	6	0	2	0	0	2	0	0	10
2 nd Qtr	1	12	0	3	0	0	0	1	0	17
3 rd Qtr	0	5	0	4	0	0	0	0	0	9
4 th Qtr	0	11	0	3	0	0	3	0	0	17
All Qtrs	1	34	0	12	0	0	5	1	0	53
UC Davis Medical Center										
1 st Qtr	0	128	0	221	20	4	57	5	0	435
2 nd Qtr	0	128	0	297	50	8	61	10	0	554
3 rd Qtr	0	145	0	266	35	11	62	4	0	523
4 th Qtr	0	111	0	223	22	9	49	6	0	420
All Qtrs	0	512	0	1,007	127	32	229	25	0	1,932
Totals	21	999	0	1,425	129	32	359	46	0	3,011

Trauma Patient Emergency Department Disposition January Through December 2009



Admitted Trauma Patient Final Disposition

January Through December 2009

For Admitted Patients

	Unknown	Home	Home Health	SNF	ICF	Rehab	Transfer	Dead	Other	Total
Kaiser Hospital South Sacramento										
1 st Qtr	0	0	0	0	0	0	0	0	0	0
2 nd Qtr	0	0	0	0	0	0	0	0	0	0
3 rd Qtr	0	78	8	9	0	0	4	3	9	111
4 th Qtr	0	106	5	12	0	1	2	5	3	134
All Qtrs	0	184	13	21	0	1	6	8	12	245
Mercy San Juan Medical Center										
1 st Qtr	0	99	9	14	0	7	20	3	6	158
2 nd Qtr	0	151	8	5	0	7	21	8	13	213
3 rd Qtr	0	137	5	9	0	13	25	7	8	204
4 th Qtr	1	106	10	14	0	7	14	5	9	166
All Qtrs	1	493	32	42	0	34	80	23	36	741
Sutter Roseville Medical Center										
1 st Qtr	0	9	0	0	0	1	0	0	0	10
2 nd Qtr	0	11	0	1	0	0	3	0	0	15
3 rd Qtr	0	9	0	0	0	0	0	0	0	9
4 th Qtr	0	12	0	0	0	2	1	1	1	17
All Qtrs	0	41	0	1	0	3	4	1	1	51
UC Davis Medical Center										
1 st Qtr	0	329	3	20	0	14	29	9	26	430
2 nd Qtr	0	409	10	32	0	9	37	21	26	544
3 rd Qtr	0	402	10	27	0	5	29	11	35	519
4 th Qtr	0	308	9	27	0	6	28	6	30	414
All Qtrs	0	1,448	32	106	0	34	123	47	117	1,907
Totals	1	2,166	77	170	0	72	213	79	166	2,944

Trauma Patient Mechanism of Injury

January Through December 2009

For Patients with ED Dispositions of Admitted, Died, or Transferred

	Unk	MVC	MCC	Pedes	GSW	SW	Fall	Assault	Bike	Other	Total
Kaiser Hospital South Sacramento											
1 st Qtr	0	0	0	0	0	0	0	0	0	0	0
2 nd Qtr	0	0	0	0	0	0	0	0	0	0	0
3 rd Qtr	4	33	7	6	10	4	21	18	4	10	117
4 th Qtr	5	32	13	11	5	11	33	14	5	12	141
All Qtrs	9	65	20	17	15	15	54	32	9	22	258
Mercy San Juan Medical Center											
1 st Qtr	6	64	16	16	7	3	37	9	9	3	170
2 nd Qtr	8	70	34	12	5	13	28	19	22	11	222
3 rd Qtr	16	73	29	12	4	7	29	15	17	4	206
4 th Qtr	4	67	24	17	7	9	29	5	8	0	170
All Qtrs	34	274	103	57	23	32	123	48	56	18	768
Sutter Roseville Medical Center											
1 st Qtr	0	3	3	0	0	0	3	0	0	1	10
2 nd Qtr	2	5	1	0	0	0	8	0	0	1	17
3 rd Qtr	0	4	0	1	0	0	3	1	0	0	9
4 th Qtr	2	5	0	1	0	1	5	1	2	0	17
All Qtrs	4	17	4	2	0	1	19	2	2	2	53
UC Davis Medical Center											
1 st Qtr	0	160	25	27	33	36	66	46	15	27	435
2 nd Qtr	1	161	43	35	33	34	117	53	37	40	554
3 rd Qtr	0	129	41	26	26	34	111	78	33	45	523
4 th Qtr	5	109	31	23	21	29	115	42	20	25	420
All Qtrs	6	559	140	111	113	133	409	219	105	137	1,932
Totals	53	915	267	187	151	181	605	301	172	179	3,011

Trauma Patient Death by Mechanism of Injury

January Through December 2009

For Patients with ED Dispositions of Admitted or Died

	Unk	MVC	MCC	Pedes	GSW	SW	Fall	Assault	Bike	Other	Total
Died in ED	0	13	4	10	12	2	2	3	0	0	46
Died after Admission	2	22	4	9	11	2	21	2	4	2	79
Total	2	35	8	19	23	4	23	5	4	2	125

Trauma Patient Mechanism of Injury by Age Group

January Through December 2009

For Patients with ED Dispositions of Admitted, Died, or Transferred

	Unk	MVC	MCC	Pedes	GSW	SW	Fall	Assault	Bike	Other	Total
<5 years	2	8	0	9	1	0	36	1	2	6	65
5-14 years	2	43	10	10	5	0	24	3	25	21	143
15-18 years	4	80	18	20	33	15	25	14	10	15	234
19-44 years	30	405	140	71	92	123	118	185	61	76	1,301
45-64 years	12	238	88	58	17	41	164	90	63	50	821
>64 years	3	141	11	19	3	2	238	8	11	11	447
Total	53	915	267	187	151	181	605	301	172	179	3,011

Trauma Patient Age Groups

January Through December 2009

For Patients with ED Dispositions of Admitted, Died, or Transferred

	Unk	<5 years	5-14 years	15-18 years	19-44 years	45-64 years	>64 years	Total
Kaiser Hospital South Sacramento								
1 st Qtr	0	0	0	0	0	0	0	0
2 nd Qtr	0	0	0	0	0	0	0	0
3 rd Qtr	0	1	2	11	50	33	20	117
4 th Qtr	0	2	2	9	51	50	27	141
All Qtrs	0	3	4	20	101	83	47	258
Mercy San Juan Medical Center								
1 st Qtr	0	0	1	16	80	42	31	170
2 nd Qtr	0	0	1	11	100	80	30	222
3 rd Qtr	0	0	0	19	100	67	20	206
4 th Qtr	0	0	2	14	70	56	28	170
All Qtrs	0	0	4	60	350	245	109	768
Sutter Roseville Medical Center								
1 st Qtr	0	0	1	1	4	1	3	10
2 nd Qtr	0	1	1	2	5	4	4	17
3 rd Qtr	0	0	1	0	7	1	0	9
4 th Qtr	0	0	1	0	6	5	5	17
All Qtrs	0	1	4	3	22	11	12	53
UC Davis Medical Center								
1 st Qtr	0	8	22	39	215	95	56	435
2 nd Qtr	0	26	44	41	221	132	90	554
3 rd Qtr	0	14	39	44	223	141	62	523
4 th Qtr	0	13	26	27	169	114	71	420
All Qtrs	0	61	131	151	828	482	279	1,932
Totals	0	65	143	234	1,301	821	447	3,011

Trauma Patient Mode of Arrival

January Through December 2009

For Patients with ED Dispositions of Admitted, Died, or Transferred

	Unk	Ambulance	Helicopter	Police	Private Vehicle	Walk-In	Total
Kaiser Hospital South Sacramento							
1 st Qtr	0	0	0	0	0	0	0
2 nd Qtr	0	0	0	0	0	0	0
3 rd Qtr	0	100	0	0	16	1	117
4 th Qtr	0	118	0	0	23	0	141
All Qtrs	0	218	0	0	39	1	258
Mercy San Juan Medical Center							
1 st Qtr	0	144	12	0	6	8	170
2 nd Qtr	0	185	19	0	5	13	222
3 rd Qtr	7	155	28	1	11	4	206
4 th Qtr	3	140	15	0	8	4	170
All Qtrs	10	624	74	1	30	29	768
Sutter Roseville Medical Center							
1 st Qtr	0	7	1	0	2	0	10
2 nd Qtr	0	9	1	0	7	0	17
3 rd Qtr	0	5	1	0	3	0	9
4 th Qtr	0	15	0	0	2	0	17
All Qtrs	0	36	3	0	14	0	53
UC Davis Medical Center							
1 st Qtr	13	371	12	0	23	16	435
2 nd Qtr	2	496	16	0	24	16	554
3 rd Qtr	0	454	10	0	36	23	523
4 th Qtr	0	370	3	0	39	8	420
All Qtrs	15	1,691	41	0	122	63	1,932
Totals	25	2,569	118	1	205	93	3,011