

Sacramento County
Summary Trauma Report
January Through December 2008

March 25, 2009

Based on Trauma Registry Data
Provided By
Mercy San Juan Medical Center
Sutter Roseville Medical Center
and UC Davis Medical Center

Prepared For
Sacramento County EMS Agency
9616 Micron Avenue, Suite 635
Sacramento, CA 95827
(916) 875-9753

By



(916) 488-3222

Notes Regarding
January Through December 2008
Summary Trauma Report

1. UC Davis Medical Center records submitted with a Mode of Arrival of Public Safety, that also indicated a Fire Department as the Transporting Agency, were changed so that the Mode of Arrival would be reported as Ambulance rather than Public Safety.

2. This report includes all patients from geographic Sacramento County who met trauma triage criteria, with one of the following Emergency Department Dispositions:
 - > Admitted
 - > Died in ED
 - > Transferred To Another Acute Care Facility From ED

In order to provide like information for the three trauma centers, other patient records submitted were not included in this report.

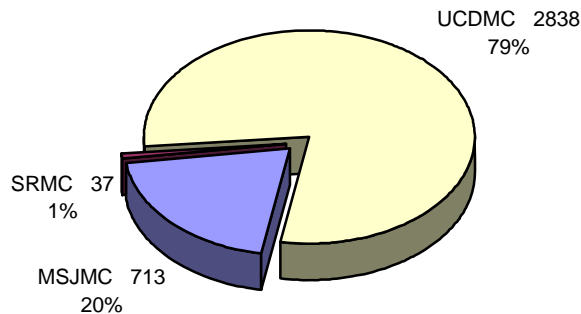
Trauma Patient Volume for Sacramento County Trauma Centers January Through December 2008

For Patients with ED Dispositions of Admitted, Died, or Transferred

	1 st Qtr	2 nd Qtr	3 rd Qtr	4 th Qtr	All Quarters
Mercy San Juan Medical Center					
Admitted	162	172	167	181	682
Died in ED	7	4	5	6	22
Transferred To Another Acute Care Facility From ED	1	4	1	3	9
Subtotal for MSJMC	170	180	173	190	713
Sutter Roseville Medical Center					
Admitted	9	7	15	6	37
Died in ED	0	0	0	0	0
Transferred To Another Acute Care Facility From ED	0	0	0	0	0
Subtotal for SRMC	9	7	15	6	37
UC Davis Medical Center					
Admitted	615	712	769	698	2,794
Died in ED	7	14	14	9	44
Transferred To Another Acute Care Facility From ED	0	0	0	0	0
Subtotal for UCDCMC	622	726	783	707	2,838
Totals for Sacramento County	801	913	971	903	3,588

Trauma Patient Volume for Sacramento County Trauma Centers January Through December 2008

For Patients with ED Dispositions of Admitted, Died, or Transferred



Trauma Patient Injury Type

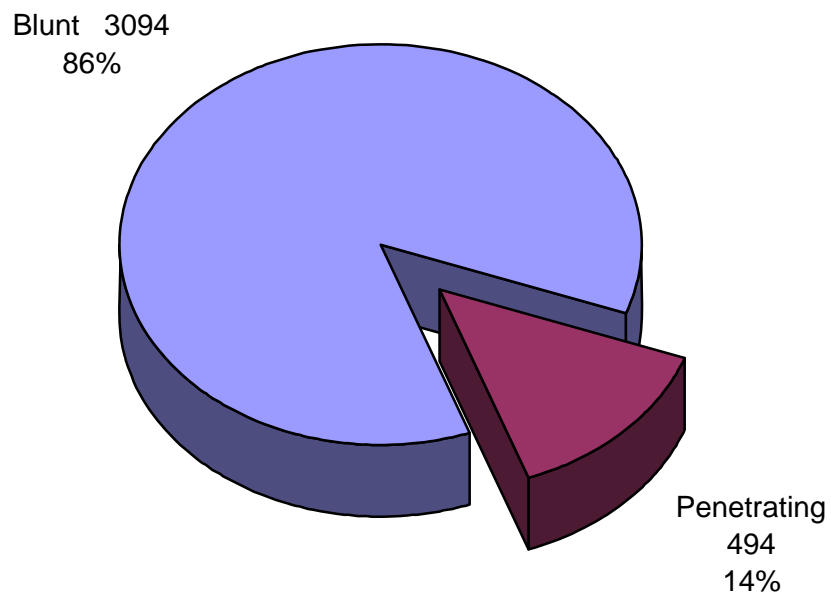
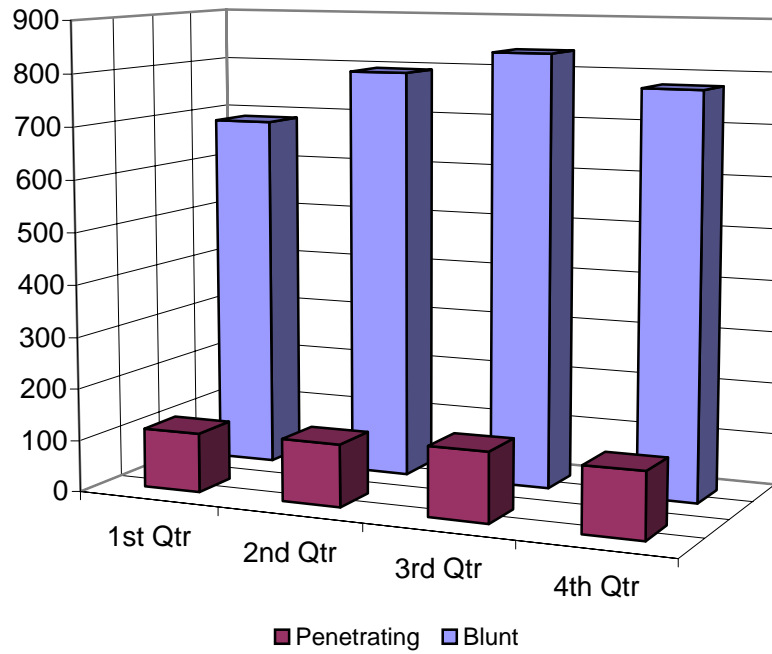
January Through December 2008

For Patients with ED Dispositions of Admitted, Died, or Transferred

	1 st Qtr	2 nd Qtr	3 rd Qtr	4 th Qtr	All Quarters
Mercy San Juan Medical Center					
Blunt Injury	145	158	156	167	626
Penetrating Injury	25	22	17	23	87
Subtotal for MSJMC	170	180	173	190	713
Sutter Roseville Medical Center					
Blunt Injury	9	7	14	6	36
Penetrating Injury	0	0	1	0	1
Subtotal for SRMC	9	7	15	6	37
UC Davis Medical Center					
Blunt Injury	533	628	667	604	2,432
Penetrating Injury	89	98	116	103	406
Subtotal for UCDCMC	622	726	783	707	2,838
Totals for Sacramento County	801	913	971	903	3,588

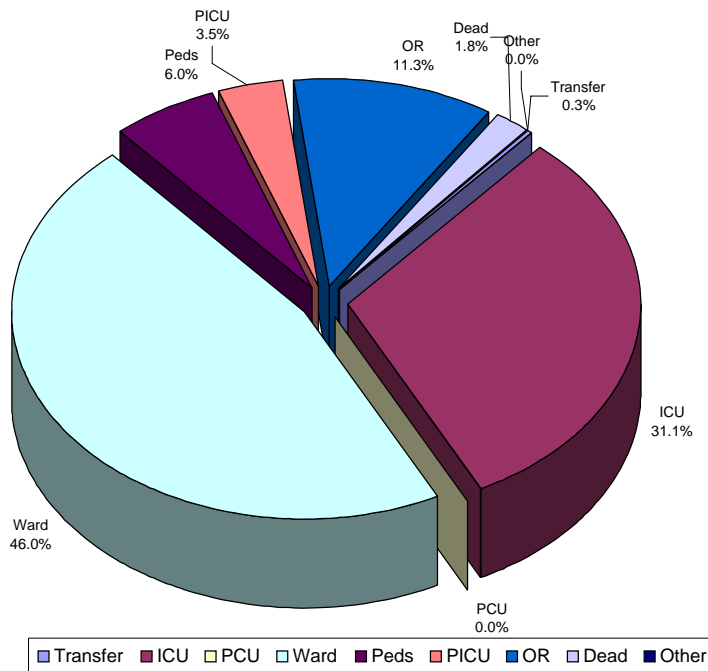
Trauma Patient Injury Type January Through December 2008

For Patients with ED Dispositions of Admitted, Died, or Transferred



Trauma Patient Emergency Department Disposition
 January Through December 2008
 For Patients with ED Dispositions of Admitted, Died, or Transferred

	Transfer	ICU	PCU	Ward	Peds	PICU	OR	Dead	Other	Total
Mercy San Juan Hospital										
1 st Qtr	1	78	0	64	1	0	19	7	0	170
2 nd Qtr	4	62	0	80	1	0	29	4	0	180
3 rd Qtr	1	65	0	78	2	2	20	5	0	173
4 th Qtr	3	90	0	73	0	0	18	6	0	190
All Qtrs	9	295	0	295	4	2	86	22	0	713
Sutter Roseville Medical Center										
1 st Qtr	0	7	0	1	0	0	1	0	0	9
2 nd Qtr	0	7	0	0	0	0	0	0	0	7
3 rd Qtr	0	11	0	2	0	0	2	0	0	15
4 th Qtr	0	6	0	0	0	0	0	0	0	6
All Qtrs	0	31	0	3	0	0	3	0	0	37
UC Davis Medical Center										
1 st Qtr	0	169	0	314	33	26	73	7	0	622
2 nd Qtr	0	179	0	362	55	28	88	14	0	726
3 rd Qtr	0	232	0	352	59	37	89	14	0	783
4 th Qtr	0	210	0	326	64	33	65	9	0	707
All Qtrs	0	790	0	1,354	211	124	315	44	0	2,838
Totals	9	1,116	0	1,652	215	126	404	66	0	3,588



Admitted Trauma Patient Final Disposition

January Through December 2008

For Admitted Patients

	Unknown	Home	Home Health	SNF	ICF	Rehab	Transfer	Dead	Other	Total
Mercy San Juan Medical Center										
1 st Qtr	0	116	8	4	0	6	19	5	4	162
2 nd Qtr	0	112	7	10	0	7	23	2	11	172
3 rd Qtr	0	104	7	4	0	11	29	6	6	167
4 th Qtr	0	117	7	8	0	8	25	6	10	181
All Qtrs	0	449	29	26	0	32	96	19	31	682
Sutter Roseville Medical Center										
1 st Qtr	0	7	0	1	0	1	0	0	0	9
2 nd Qtr	0	5	0	1	0	0	1	0	0	7
3 rd Qtr	0	14	0	0	0	0	1	0	0	15
4 th Qtr	0	5	0	0	0	0	1	0	0	6
All Qtrs	0	31	0	2	0	1	3	0	0	37
UC Davis Medical Center										
1 st Qtr	0	454	22	21	0	16	53	21	28	615
2 nd Qtr	0	532	20	26	0	14	62	20	38	712
3 rd Qtr	0	571	22	25	0	18	67	24	42	769
4 th Qtr	0	525	15	28	0	16	51	33	30	698
All Qtrs	0	2,082	79	100	0	64	233	98	138	2,794
Totals	0	2,562	108	128	0	97	332	117	169	3,513

Trauma Patient Mechanism of Injury January Through December 2008

For Patients with ED Dispositions of Admitted, Died, or Transferred

	Unk	MVC	MCC	Pedes	GSW	SW	Fall	Assault	Bike	Other	Total
Mercy San Juan Medical Center											
1 st Qtr	4	65	21	6	17	4	33	13	3	4	170
2 nd Qtr	4	47	37	10	5	10	25	20	11	11	180
3 rd Qtr	5	57	33	13	3	6	15	10	17	14	173
4 th Qtr	5	75	18	21	9	6	26	11	14	5	190
All Qtrs	18	244	109	50	34	26	99	54	45	34	713
Sutter Roseville Medical Center											
1 st Qtr	0	4	1	0	0	0	3	1	0	0	9
2 nd Qtr	0	1	3	0	0	0	2	1	0	0	7
3 rd Qtr	0	2	0	0	0	1	5	2	3	2	15
4 th Qtr	0	0	0	1	0	0	3	1	1	0	6
All Qtrs	0	7	4	1	0	1	13	5	4	2	37
UC Davis Medical Center											
1 st Qtr	37	215	35	62	28	27	108	47	22	41	622
2 nd Qtr	47	213	78	43	24	41	127	55	48	50	726
3 rd Qtr	88	213	75	37	40	40	123	73	53	41	783
4 th Qtr	46	236	41	57	34	31	121	44	48	49	707
All Qtrs	218	877	229	199	126	139	479	219	171	181	2,838
Totals	236	1,128	342	250	160	166	591	278	220	217	3,588

Trauma Patient Mode of Arrival
January Through December 2008

For Patients with ED Dispositions of Admitted, Died, or Transferred

	Unknown	Ambulance	Helicopter	Police	Public Safety	Private Vehicle	Walk-In	Total
Mercy San Juan Medical Center								
1 st Qtr	0	144	16	0	0	1	9	170
2 nd Qtr	0	145	11	1	0	10	13	180
3 rd Qtr	0	158	3	0	0	3	9	173
4 th Qtr	0	166	10	1	0	7	6	190
All Qtrs	0	613	40	2	0	21	37	713
Sutter Roseville Medical Center								
1 st Qtr	0	9	0	0	0	0	0	9
2 nd Qtr	0	7	0	0	0	0	0	7
3 rd Qtr	0	7	0	0	0	8	0	15
4 th Qtr	0	4	0	0	0	2	0	6
All Qtrs	0	27	0	0	0	10	0	37
UC Davis Medical Center								
1 st Qtr	174	73	74	0	279	15	7	622
2 nd Qtr	185	96	108	0	314	16	7	726
3 rd Qtr	118	143	132	0	350	26	14	783
4 th Qtr	65	192	88	0	315	22	25	707
All Qtrs	542	504	402	0	1,258	79	53	2,838
Totals	542	1,144	442	2	1,258	110	90	3,588

Trauma Patient Age Groups

January Through December 2008

For Patients with ED Dispositions of Admitted, Died, or Transferred

	Unk	<5 years	5-14 years	15-18 years	19-44 years	45-64 years	>64 years	Total
Mercy San Juan Medical Center								
1 st Qtr	0	0	0	14	75	58	23	170
2 nd Qtr	0	0	1	12	89	59	19	180
3 rd Qtr	0	0	6	9	77	61	20	173
4 th Qtr	0	0	0	16	96	53	25	190
All Qtrs	0	0	7	51	337	231	87	713
Sutter Roseville Medical Center								
1 st Qtr	0	0	0	1	4	2	2	9
2 nd Qtr	0	0	0	1	3	2	1	7
3 rd Qtr	0	0	1	1	7	5	1	15
4 th Qtr	0	0	0	1	2	2	1	6
All Qtrs	0	0	1	4	16	11	5	37
UC Davis Medical Center								
1 st Qtr	0	23	44	65	241	157	92	622
2 nd Qtr	0	35	55	48	314	179	95	726
3 rd Qtr	0	36	73	55	334	200	85	783
4 th Qtr	0	35	71	60	271	166	104	707
All Qtrs	0	129	243	228	1,160	702	376	2,838
Totals	0	129	251	283	1,513	944	468	3,588

Trauma Patient Death by Mechanism of Injury

January Through December 2008

For Patients with ED Dispositions of Admitted or Died

	Unk	MVC	MCC	Pedes	GSW	SW	Fall	Assault	Bike	Other	Total
Died in ED	11	10	6	6	18	3	7	1	2	2	66
Died after Admission	13	26	6	10	12	2	34	5	7	2	117
Total	24	36	12	16	30	5	41	6	9	4	183

Trauma Patient Mechanism of Injury by Age Group

January Through December 2008

For Patients with ED Dispositions of Admitted, Died, or Transferred

	Unk	MVC	MCC	Pedes	GSW	SW	Fall	Assault	Bike	Other	Total
<5 years	11	27	0	15	1	0	61	2	1	11	129
5-14 years	21	63	24	28	3	6	40	3	41	22	251
15-18 years	19	87	22	21	40	20	22	17	21	14	283
19-44 years	97	522	169	87	96	110	114	165	69	84	1,513
45-64 years	65	269	116	68	13	26	159	79	73	76	944
>64 years	23	160	11	31	7	4	195	12	15	10	468
Total	236	1,128	342	250	160	166	591	278	220	217	3,588

Four Year Summary

For Patients with ED Dispositions of Admitted, Died, or Transferred

	2005	2006	2007	2008
Mercy San Juan Medical Center	866	787	797	713
Sutter Roseville Medical Center	74	71	67	37
UC Davis Medical Center	3,123	3,618	3,072	2,838
Totals for Sacramento County	4,063	4,476	3,936	3,588