

Sacramento County
Summary Trauma Report
January Through December 2007

February 27, 2008

Based on Trauma Registry Data
Provided By
Mercy San Juan Medical Center
Sutter Roseville Medical Center
and UC Davis Medical Center

Prepared For
Sacramento County EMS Agency
9616 Micron Avenue, Suite 635
Sacramento, CA 95827
(916) 875-9753

By



(916) 488-3222

Notes Regarding
January Through December 2007
Summary Trauma Report

1. UC Davis Medical Center records submitted with a Mode of Arrival of Public Safety, that also indicated a Fire Department as the Transporting Agency, were changed so that the Mode of Arrival would be reported as Ambulance rather than Public Safety.

2. This report includes all patients from geographic Sacramento County who met trauma triage criteria, with one of the following Emergency Department Dispositions:
 - > Admitted
 - > Died in ED
 - > Transferred To Another Acute Care Facility From ED

In order to provide like information for the three trauma centers, other patient records submitted were not included in this report.

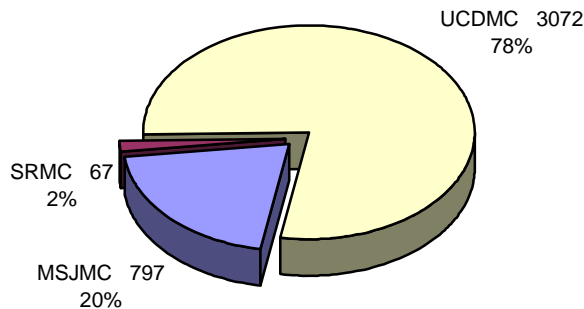
Trauma Patient Volume for Sacramento County Trauma Centers January Through December 2007

For Patients with ED Dispositions of Admitted, Died, or Transferred

	1 st Qtr	2 nd Qtr	3 rd Qtr	4 th Qtr	All Quarters
Mercy San Juan Medical Center					
Admitted	157	179	242	191	769
Died in ED	6	4	9	2	21
Transferred To Another Acute Care Facility From ED	1	2	1	3	7
Subtotal for MSJMC	164	185	252	196	797
Sutter Roseville Medical Center					
Admitted	24	15	19	9	67
Died in ED	0	0	0	0	0
Transferred To Another Acute Care Facility From ED	0	0	0	0	0
Subtotal for SRMC	24	15	19	9	67
UC Davis Medical Center					
Admitted	653	720	917	723	3,013
Died in ED	19	13	14	13	59
Transferred To Another Acute Care Facility From ED	0	0	0	0	0
Subtotal for UCDCMC	672	733	931	736	3,072
Totals for Sacramento County	860	933	1,202	941	3,936

Trauma Patient Volume for Sacramento County Trauma Centers January Through December 2007

For Patients with ED Dispositions of Admitted, Died, or Transferred



Trauma Patient Injury Type

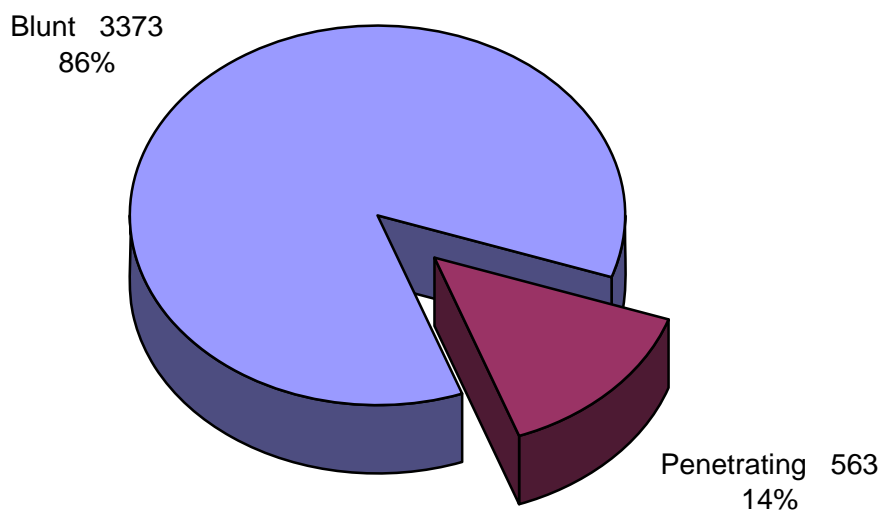
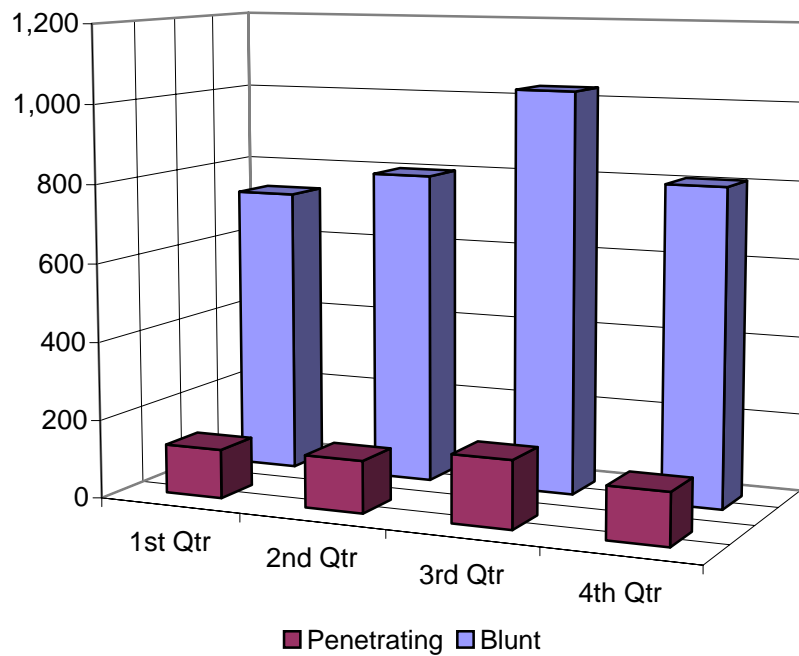
January Through December 2007

For Patients with ED Dispositions of Admitted, Died, or Transferred

	1 st Qtr	2 nd Qtr	3 rd Qtr	4 th Qtr	All Quarters
Mercy San Juan Medical Center					
Blunt Injury	144	161	220	172	697
Penetrating Injury	20	24	32	24	100
Subtotal for MSJMC	164	185	252	196	797
Sutter Roseville Medical Center					
Blunt Injury	24	15	18	6	63
Penetrating Injury	0	0	1	3	4
Subtotal for SRMC	24	15	19	9	67
UC Davis Medical Center					
Blunt Injury	567	624	792	630	2,613
Penetrating Injury	105	109	139	106	459
Subtotal for UCDCMC	672	733	931	736	3,072
Totals for Sacramento County	860	933	1,202	941	3,936

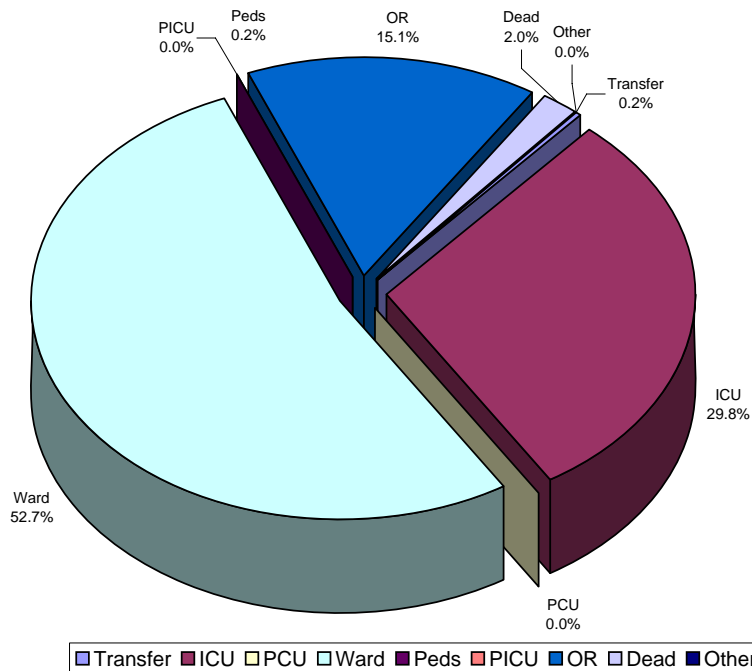
Trauma Patient Injury Type January Through December 2007

For Patients with ED Dispositions of Admitted, Died, or Transferred



Trauma Patient Emergency Department Disposition
 January Through December 2007
 For Patients with ED Dispositions of Admitted, Died, or Transferred

	Transfer	ICU	PCU	Ward	Peds	PICU	OR	Dead	Other	Total
Mercy San Juan Hospital										
1 st Qtr	1	71	0	55	2	0	29	6	0	164
2 nd Qtr	2	77	0	65	2	0	35	4	0	185
3 rd Qtr	1	104	0	102	1	0	35	9	0	252
4 th Qtr	3	71	1	95	2	0	22	2	0	196
All Qtrs	7	323	1	317	7	0	121	21	0	797
Sutter Roseville Medical Center										
1 st Qtr	0	13	0	5	0	0	6	0	0	24
2 nd Qtr	0	13	0	2	0	0	0	0	0	15
3 rd Qtr	0	13	0	3	0	0	3	0	0	19
4 th Qtr	0	5	0	0	0	0	4	0	0	9
All Qtrs	0	44	0	10	0	0	13	0	0	67
UC Davis Medical Center										
1 st Qtr	0	179	0	383	0	0	91	19	0	672
2 nd Qtr	0	139	0	449	0	0	132	13	0	733
3 rd Qtr	0	244	0	542	0	0	131	14	0	931
4 th Qtr	0	242	0	374	0	0	107	13	0	736
All Qtrs	0	804	0	1,748	0	0	461	59	0	3,072
Totals	7	1,171	1	2,075	7	0	595	80	0	3,936



Admitted Trauma Patient Final Disposition
 January Through December 2007
 For Admitted Patients

	Unk	Home	Home Health	Home-Rehab	SNF	ICF	Rehab	Transfer	Dead	Other	Total
Mercy San Juan Medical Center											
1 st Qtr	0	108	2	1	10	3	6	16	5	6	157
2 nd Qtr	1	128	6	0	4	0	14	11	6	9	179
3 rd Qtr	0	181	7	0	2	1	11	30	4	6	242
4 th Qtr	2	134	6	1	5	0	9	26	4	4	191
All Qtrs	3	551	21	2	21	4	40	83	19	25	769
Sutter Roseville Medical Center											
1 st Qtr	0	16	0	0	1	0	2	4	1	0	24
2 nd Qtr	0	10	0	0	1	0	2	2	0	0	15
3 rd Qtr	0	17	0	0	0	0	0	2	0	0	19
4 th Qtr	0	7	0	0	0	0	0	0	1	1	9
All Qtrs	0	50	0	0	2	0	4	8	2	1	67
UC Davis Medical Center											
1 st Qtr	0	554	17	0	21	0	5	24	10	22	653
2 nd Qtr	0	584	15	0	23	0	9	40	25	24	720
3 rd Qtr	0	852	5	0	6	0	2	16	27	9	917
4 th Qtr	0	704	0	0	0	0	0	0	19	0	723
All Qtrs	0	2,694	37	0	50	0	16	80	81	55	3,013
Totals	3	3,295	58	2	73	4	60	171	102	81	3,849

Trauma Patient Mechanism of Injury January Through December 2007

For Patients with ED Dispositions of Admitted, Died, or Transferred

	Unk	MVC	MCC	Pedes	GSW	SW	Fall	Assault	Bike	Other	Total
Mercy San Juan Medical Center											
1 st Qtr	11	60	17	12	7	6	27	14	6	4	164
2 nd Qtr	8	64	24	7	12	4	29	11	14	12	185
3 rd Qtr	6	73	37	9	13	14	37	30	14	19	252
4 th Qtr	2	87	20	10	7	14	26	7	17	6	196
All Qtrs	27	284	98	38	39	38	119	62	51	41	797
Sutter Roseville Medical Center											
1 st Qtr	0	9	5	1	0	0	4	1	3	1	24
2 nd Qtr	1	4	3	0	0	0	2	2	0	3	15
3 rd Qtr	3	6	3	0	0	0	1	1	2	3	19
4 th Qtr	0	2	1	0	1	2	1	0	2	0	9
All Qtrs	4	21	12	1	1	2	8	4	7	7	67
UC Davis Medical Center											
1 st Qtr	280	164	29	34	23	26	47	35	19	15	672
2 nd Qtr	63	242	57	59	33	38	107	60	35	39	733
3 rd Qtr	92	337	67	57	55	38	119	71	43	52	931
4 th Qtr	47	264	47	47	42	39	115	59	29	47	736
All Qtrs	482	1,007	200	197	153	141	388	225	126	153	3,072
Totals	513	1,312	310	236	193	181	515	291	184	201	3,936

Trauma Patient Death by Mechanism of Injury

January Through June 2007

For Patients with ED Dispositions of Admitted or Died

	Unk	MVC	MCC	Pedes	GSW	SW	Fall	Assault	Bike	Other	Total
Died in ED	20	8	1	5	5	1	0	0	1	1	42
Died after Admission	10	8	1	4	6	1	8	3	1	3	45
Total	30	16	2	9	11	2	8	3	2	4	87

Trauma Patient Mechanism of Injury by Age Group

January Through June 2007

For Patients with ED Dispositions of Admitted, Died, or Transferred

	Unk	MVC	MCC	Pedes	GSW	SW	Fall	Assault	Bike	Other	Total
<5 years	31	7	0	9	0	0	19	0	0	2	68
5-14 years	30	29	6	15	2	2	8	5	18	5	120
15-18 years	33	50	10	13	17	10	4	6	4	11	158
19-44 years	151	265	75	42	48	50	48	67	23	27	796
45-64 years	78	130	39	24	6	11	62	38	22	18	428
>64 years	36	58	4	10	1	1	73	7	10	8	208
Total	359	539	134	113	74	74	214	123	77	71	1,778

Trauma Patient Age Groups

January Through December 2007

For Patients with ED Dispositions of Admitted, Died, or Transferred

	Unk	<5 years	5-14 years	15-18 years	19-44 years	45-64 years	>64 years	Total
Mercy San Juan Medical Center								
1 st Qtr	0	0	3	12	81	46	22	164
2 nd Qtr	0	0	2	22	88	51	22	185
3 rd Qtr	0	0	3	26	135	64	24	252
4 th Qtr	0	0	3	16	91	54	32	196
All Qtrs	0	0	11	76	395	215	100	797
Sutter Roseville Medical Center								
1 st Qtr	0	0	2	6	12	3	1	24
2 nd Qtr	0	0	0	0	7	4	4	15
3 rd Qtr	0	0	0	4	7	6	2	19
4 th Qtr	0	0	0	2	5	1	1	9
All Qtrs	0	0	2	12	31	14	8	67
UC Davis Medical Center								
1 st Qtr	0	33	57	61	285	152	84	672
2 nd Qtr	0	36	62	58	328	172	77	733
3 rd Qtr	0	42	92	66	414	218	99	931
4 th Qtr	0	35	60	61	335	144	101	736
All Qtrs	0	146	271	246	1,362	686	361	3,072
Totals	0	146	284	334	1,788	915	469	3,936

Trauma Patient Death by Mechanism of Injury

January Through December 2007

For Patients with ED Dispositions of Admitted or Died

	Unk	MVC	MCC	Pedes	GSW	SW	Fall	Assault	Bike	Other	Total
Died in ED	23	20	2	10	14	2	6	0	1	2	80
Died after Admission	18	26	4	12	11	2	16	7	2	4	102
Total	41	46	6	22	25	4	22	7	3	6	182

Trauma Patient Mechanism of Injury by Age Group

January Through December 2007

For Patients with ED Dispositions of Admitted, Died, or Transferred

	Unk	MVC	MCC	Pedes	GSW	SW	Fall	Assault	Bike	Other	Total
<5 years	38	32	0	13	1	0	51	2	2	7	146
5-14 years	45	77	15	26	3	4	39	6	30	39	284
15-18 years	45	131	19	23	32	20	11	25	9	19	334
19-44 years	232	629	174	83	136	130	108	160	64	72	1,788
45-64 years	111	277	90	60	19	25	143	88	57	45	915
>64 years	42	166	12	31	2	2	163	10	22	19	469
Total	513	1,312	310	236	193	181	515	291	184	201	3,936

Four Year Summary

For Patients with ED Dispositions of Admitted, Died, or Transferred

	2004	2005	2006	2007
Mercy San Juan Medical Center	943	866	787	797
Sutter Roseville Medical Center	85	74	71	67
UC Davis Medical Center	2,708	3,123	3,618	3,072
Totals for Sacramento County	3,736	4,063	4,476	3,936