

Sacramento County
Summary Trauma Report
January Through December 2006

September 6, 2007

Based on Trauma Registry Data
Provided By
Mercy San Juan Medical Center
Sutter Roseville Medical Center
and UC Davis Medical Center

Prepared For
Sacramento County EMS Agency
9616 Micron Avenue, Suite 635
Sacramento, CA 95827
(916) 875-9753

By



(916) 488-3222

Notes Regarding
January Through December 2006
Summary Trauma Report

1. UC Davis Medical Center records submitted with a Mode of Arrival of Public Safety, that also indicated a Fire Department as the Transporting Agency, were changed so that the Mode of Arrival would be reported as Ambulance rather than Public Safety.

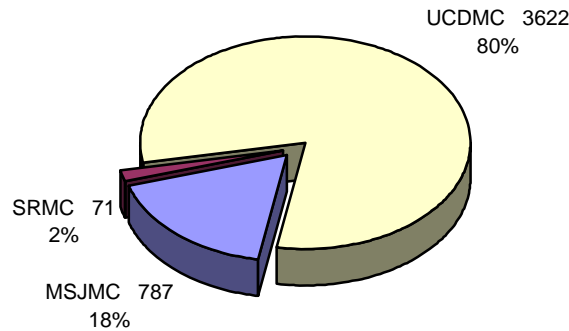
2. This report includes all patients from geographic Sacramento County who met trauma triage criteria, with one of the following Emergency Department Dispositions:
 - > Admitted
 - > Died in ED
 - > Transferred To Another Acute Care Facility From ED

In order to provide like information for the three trauma centers, other patient records submitted were not included in this report.

Trauma Patient Volume for Sacramento County Trauma Centers
 January Through December 2006
 For Patients with ED Dispositions of Admitted, Died, or Transferred

	1 st Qtr	2 nd Qtr	3 rd Qtr	4 th Qtr	All Quarters
Mercy San Juan Medical Center					
Admitted	156	211	220	174	761
Died in ED	3	4	6	2	15
Transferred To Another Acute Care Facility From ED	1	4	4	2	11
Subtotal for MSJMC	160	219	230	178	787
Sutter Roseville Medical Center					
Admitted	15	16	20	18	69
Died in ED	0	0	1	0	1
Transferred To Another Acute Care Facility From ED	1	0	0	0	1
Subtotal for SRMC	16	16	21	18	71
UC Davis Medical Center					
Admitted	833	963	965	824	3,585
Died in ED	11	10	9	7	37
Transferred To Another Acute Care Facility From ED	0	0	0	0	0
Subtotal for UCDCMC	844	973	974	831	3,622
Totals for Sacramento County	1,020	1,208	1,225	1,027	4,480

Trauma Patient Volume for Sacramento County Trauma Centers
 January Through December 2006
 For Patients with ED Dispositions of Admitted, Died, or Transferred



Trauma Patient Injury Type

January Through December 2006

For Patients with ED Dispositions of Admitted, Died, or Transferred

	1 st Qtr	2 nd Qtr	3 rd Qtr	4 th Qtr	All Quarters
Mercy San Juan Medical Center					
Blunt Injury	142	197	199	153	691
Penetrating Injury	18	22	31	25	96
Subtotal for MSJMC	160	219	230	178	787
Sutter Roseville Medical Center					
Blunt Injury	13	15	21	18	67
Penetrating Injury	3	1	0	0	4
Subtotal for SRMC	16	16	21	18	71
UC Davis Medical Center					
Blunt Injury	717	840	845	728	3,130
Penetrating Injury	127	133	129	103	492
Subtotal for UCDCMC	844	973	974	831	3,622
Totals for Sacramento County	1,020	1,208	1,225	1,027	4,480

	1 st Qtr	2 nd Qtr	3 rd Qtr	4 th Qtr	All
Blunt 3888	872	1,052	1,065	899	3,888
Penetrating 592	148	156	160	128	592

MSJMC 787

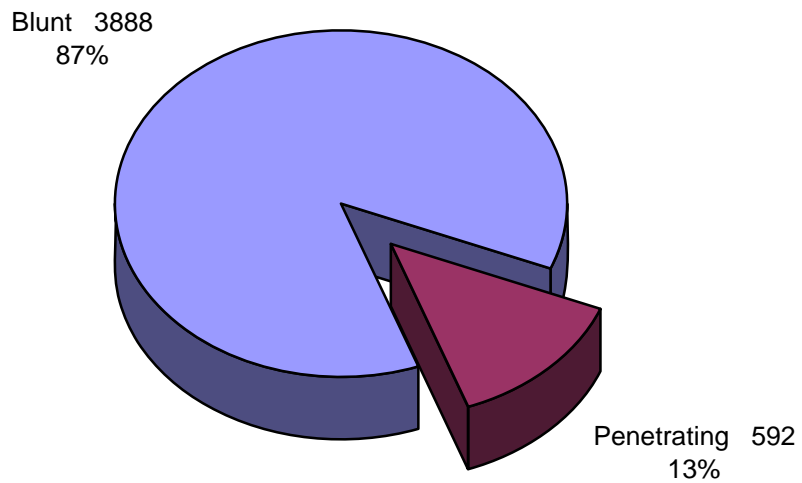
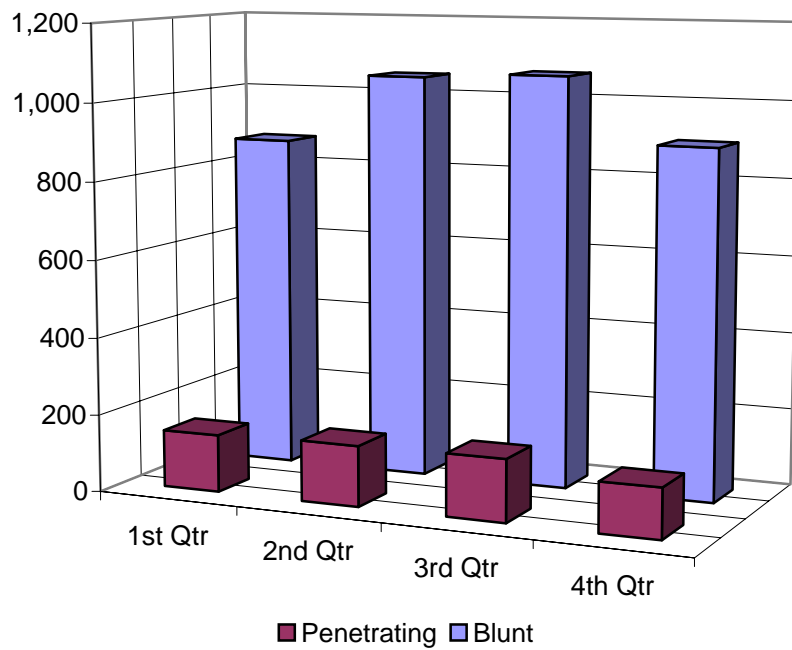
SRMC 71

UCDMC 3622

Trauma Patient Injury Type

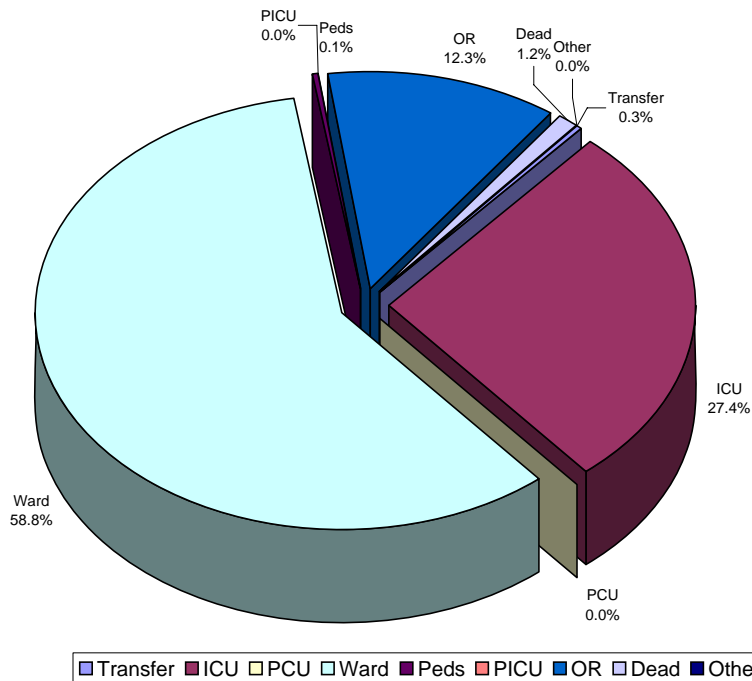
January Through December 2006

For Patients with ED Dispositions of Admitted, Died, or Transferred



Trauma Patient Emergency Department Disposition
 January Through December 2006
 For Patients with ED Dispositions of Admitted, Died, or Transferred

	Transfer	ICU	PCU	Ward	Peds	PICU	OR	Dead	Other	Total
Mercy San Juan Hospital										
1 st Qtr	1	47	0	83	3	0	23	3	0	160
2 nd Qtr	4	83	0	100	1	0	27	4	0	219
3 rd Qtr	4	95	0	90	0	0	35	6	0	230
4 th Qtr	2	82	0	55	0	0	37	2	0	178
All Qtrs	11	307	0	328	4	0	122	15	0	787
Sutter Roseville Medical Center										
1 st Qtr	1	8	0	6	0	0	1	0	0	16
2 nd Qtr	0	10	0	3	0	0	3	0	0	16
3 rd Qtr	0	11	0	5	0	0	4	1	0	21
4 th Qtr	0	12	0	6	0	0	0	0	0	18
All Qtrs	1	41	0	20	0	0	8	1	0	71
UC Davis Medical Center										
1 st Qtr	0	204	0	524	0	0	105	11	0	844
2 nd Qtr	0	206	0	628	0	0	129	10	0	973
3 rd Qtr	0	232	0	628	0	0	105	9	0	974
4 th Qtr	0	239	0	504	0	0	81	7	0	831
All Qtrs	0	881	0	2,284	0	0	420	37	0	3,622
Totals	12	1,229	0	2,632	4	0	550	53	0	4,480



Admitted Trauma Patient Final Disposition
 January Through December 2006
 For Admitted Patients

	Unk	Home	Home Health	Home-Rehab	SNF	ICF	Rehab	Transfer	Dead	Other	Total
Mercy San Juan Medical Center											
1 st Qtr	1	108	5	2	9	0	6	17	4	4	156
2 nd Qtr	2	156	8	0	9	1	5	20	2	8	211
3 rd Qtr	1	156	5	1	14	1	7	23	4	8	220
4 th Qtr	0	120	5	0	7	0	2	26	6	8	174
All Qtrs	4	540	23	3	39	2	20	86	16	28	761
Sutter Roseville Medical Center											
1 st Qtr	0	12	0	0	0	0	3	0	0	0	15
2 nd Qtr	0	13	0	0	1	0	1	0	1	0	16
3 rd Qtr	0	12	0	0	0	0	1	5	2	0	20
4 th Qtr	0	17	0	0	0	0	0	1	0	0	18
All Qtrs	0	54	0	0	1	0	5	6	3	0	69
UC Davis Medical Center											
1 st Qtr	0	832	0	0	0	0	0	0	0	1	833
2 nd Qtr	0	903	10	0	10	0	4	14	13	9	963
3 rd Qtr	0	842	11	0	17	0	11	41	24	19	965
4 th Qtr	0	634	24	0	27	0	18	57	26	38	824
All Qtrs	0	3,211	45	0	54	0	33	112	63	67	3,585
Totals	4	3,805	68	3	94	2	58	204	82	95	4,415

Trauma Patient Mechanism of Injury

January Through December 2006

For Patients with ED Dispositions of Admitted, Died, or Transferred

	Unk	MVC	MCC	Pedes	GSW	SW	Fall	Assault	Bike	Other	Total
Mercy San Juan Medical Center											
1 st Qtr	4	72	12	14	5	7	19	11	9	7	160
2 nd Qtr	10	93	24	11	5	8	24	25	9	10	219
3 rd Qtr	8	80	31	7	12	7	32	25	11	17	230
4 th Qtr	5	80	13	15	13	6	23	14	2	7	178
All Qtrs	27	325	80	47	35	28	98	75	31	41	787
Sutter Roseville Medical Center											
1 st Qtr	5	3	1	0	0	0	4	3	0	0	16
2 nd Qtr	8	4	0	0	0	1	3	0	0	0	16
3 rd Qtr	4	11	2	1	0	0	1	0	1	1	21
4 th Qtr	6	8	1	0	0	0	2	0	0	1	18
All Qtrs	23	26	4	1	0	1	10	3	1	2	71
UC Davis Medical Center											
1 st Qtr	428	204	20	24	18	23	47	43	16	21	844
2 nd Qtr	392	247	44	29	27	30	82	49	35	38	973
3 rd Qtr	523	202	28	18	21	19	52	50	20	41	974
4 th Qtr	277	281	24	32	25	29	66	44	28	25	831
All Qtrs	1,620	934	116	103	91	101	247	186	99	125	3,622
Totals	1,670	1,285	200	151	126	130	355	264	131	168	4,480

Trauma Patient Mode of Arrival
 January Through December 2006
 For Patients with ED Dispositions of Admitted, Died, or Transferred

	Unknown	Ambulance	Helicopter	Police	Public Safety	Private Vehicle	Walk-In	Total
Mercy San Juan Medical Center								
1 st Qtr	0	145	0	0	0	6	9	160
2 nd Qtr	2	202	2	1	0	6	6	219
3 rd Qtr	2	206	3	0	0	4	15	230
4 th Qtr	3	167	2	0	0	4	2	178
All Qtrs	7	720	7	1	0	20	32	787
Sutter Roseville Medical Center								
1 st Qtr	0	10	1	0	0	5	0	16
2 nd Qtr	1	11	0	0	0	4	0	16
3 rd Qtr	0	16	3	0	0	2	0	21
4 th Qtr	0	16	0	0	0	2	0	18
All Qtrs	1	53	4	0	0	13	0	71
UC Davis Medical Center								
1 st Qtr	6	678	96	0	0	64	0	844
2 nd Qtr	9	755	136	0	0	58	15	973
3 rd Qtr	5	766	128	0	0	35	40	974
4 th Qtr	12	665	120	0	0	28	6	831
All Qtrs	32	2,864	480	0	0	185	61	3,622
Totals	40	3,637	491	1	0	218	93	4,480

Trauma Patient Age Groups

January Through December 2006

For Patients with ED Dispositions of Admitted, Died, or Transferred

	Unk	<5 years	5-14 years	15-18 years	19-44 years	45-64 years	>64 years	Total
Mercy San Juan Medical Center								
1 st Qtr	0	1	4	14	92	30	19	160
2 nd Qtr	0	0	3	22	125	48	21	219
3 rd Qtr	0	1	1	21	114	59	34	230
4 th Qtr	0	0	1	18	99	35	25	178
All Qtrs	0	2	9	75	430	172	99	787
Sutter Roseville Medical Center								
1 st Qtr	0	0	1	1	8	2	4	16
2 nd Qtr	0	0	1	4	9	2	0	16
3 rd Qtr	0	0	0	4	9	6	2	21
4 th Qtr	0	0	1	6	7	1	3	18
All Qtrs	0	0	3	15	33	11	9	71
UC Davis Medical Center								
1 st Qtr	0	33	68	81	417	156	89	844
2 nd Qtr	0	62	92	80	463	177	99	973
3 rd Qtr	0	57	88	90	473	209	57	974
4 th Qtr	0	61	88	87	344	161	90	831
All Qtrs	0	213	336	338	1,697	703	335	3,622
Totals	0	215	348	428	2,160	886	443	4,480

Trauma Patient Death by Mechanism of Injury

January Through December 2006

For Patients with ED Dispositions of Admitted or Died

	Unk	MVC	MCC	Pedes	GSW	SW	Fall	Assault	Bike	Other	Total
Died in ED	36	6	2	2	6	0	0	0	0	1	53
Died after Admission	26	16	3	11	10	0	11	1	0	4	82
Total	62	22	5	13	16	0	11	1	0	5	135

Trauma Patient Mechanism of Injury by Age Group

January Through December 2006

For Patients with ED Dispositions of Admitted, Died, or Transferred

	Unk	MVC	MCC	Pedes	GSW	SW	Fall	Assault	Bike	Other	Total
<5 years	100	42	1	17	0	1	34	9	0	11	215
5-14 years	137	90	11	21	6	1	33	1	30	18	348
15-18 years	141	159	10	20	21	16	19	16	9	17	428
19-44 years	781	657	119	45	87	84	102	172	37	76	2,160
45-64 years	337	207	53	39	7	24	74	63	46	36	886
>64 years	174	130	6	9	5	4	93	3	9	10	443
Total	1,670	1,285	200	151	126	130	355	264	131	168	4,480

Four Year Summary

For Patients with ED Dispositions of Admitted, Died, or Transferred

	2003	2004	2005	2006
Mercy San Juan Medical Center	859	943	866	787
Sutter Roseville Medical Center	58	85	74	71
UC Davis Medical Center	1,992	2,708	3,123	3,622
Totals for Sacramento County	2,909	3,736	4,063	4,480