

Notes Regarding
January Through December 2005
Summary Trauma Report

1. UC Davis Medical Center records submitted with a Mode of Arrival of Public Safety, that also indicated a Fire Department as the Transporting Agency, were changed so that the Mode of Arrival would be reported as Ambulance rather than Public Safety.

2. This report includes all patients from geographic Sacramento County who met trauma triage criteria, with one of the following Emergency Department Dispositions:
 - > Admitted
 - > Died in ED
 - > Transferred To Another Acute Care Facility From ED

In order to provide like information for the three trauma centers, other patient records submitted were not included in this report.

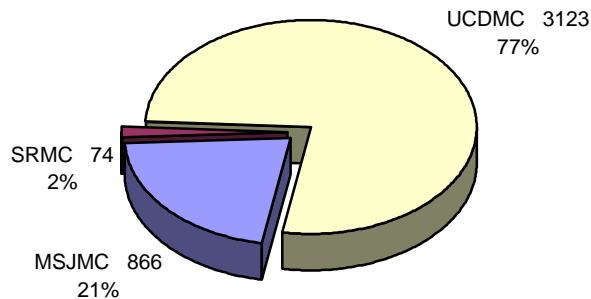
Trauma Patient Volume for Sacramento County Trauma Centers January Through December 2005

For Patients with ED Dispositions of Admitted, Died, or Transferred

	1 st Qtr	2 nd Qtr	3 rd Qtr	4 th Qtr	All Quarters
Mercy San Juan Medical Center					
Admitted	186	226	210	215	837
Died in ED	6	1	5	5	17
Transferred To Another Acute Care Facility From ED	4	2	2	4	12
Subtotal for MSJMC	196	229	217	224	866
Sutter Roseville Medical Center					
Admitted	21	22	14	16	73
Died in ED	0	0	1	0	1
Transferred To Another Acute Care Facility From ED	0	0	0	0	0
Subtotal for SRMC	21	22	15	16	74
UC Davis Medical Center					
Admitted	688	818	879	694	3,079
Died in ED	6	9	17	12	44
Transferred To Another Acute Care Facility From ED	0	0	0	0	0
Subtotal for UCDCMC	694	827	896	706	3,123
Totals for Sacramento County	911	1,078	1,128	946	4,063

Trauma Patient Volume for Sacramento County Trauma Centers January Through December 2005

For Patients with ED Dispositions of Admitted, Died, or Transferred



Trauma Patient Injury Type

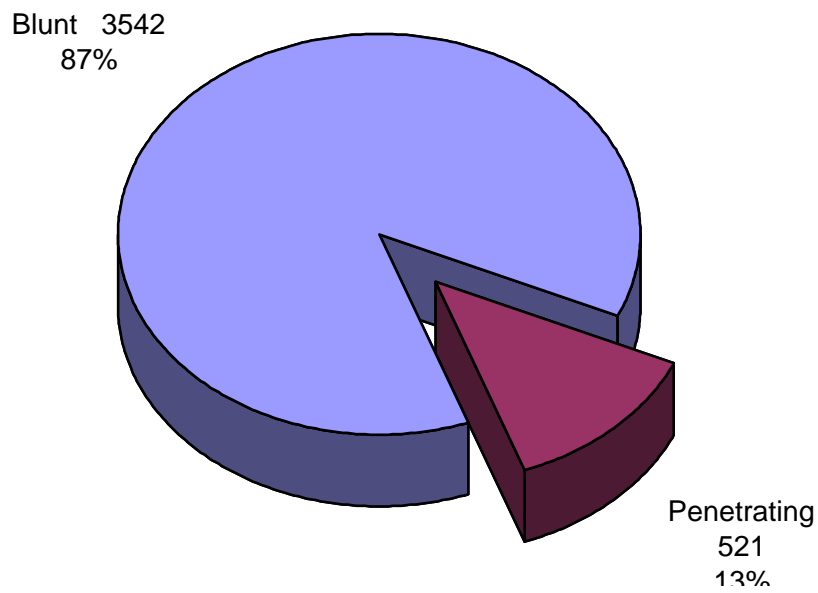
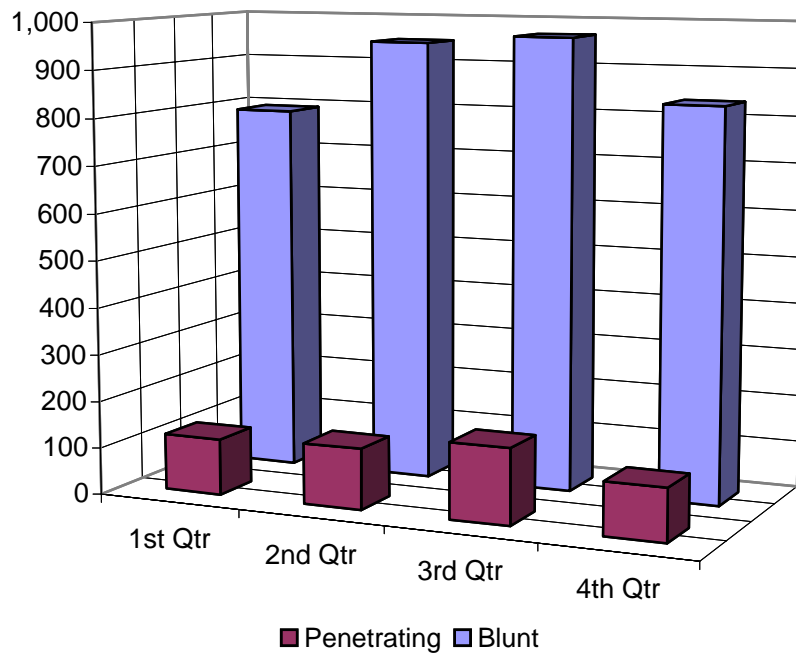
January Through December 2005

For Patients with ED Dispositions of Admitted, Died, or Transferred

	1 st Qtr	2 nd Qtr	3 rd Qtr	4 th Qtr	All Quarters
Mercy San Juan Medical Center					
Blunt Injury	175	210	195	209	789
Penetrating Injury	21	19	22	15	77
Subtotal for MSJMC	196	229	217	224	866
Sutter Roseville Medical Center					
Blunt Injury	19	18	13	15	65
Penetrating Injury	2	4	2	1	9
Subtotal for SRMC	21	22	15	16	74
UC Davis Medical Center					
Blunt Injury	598	721	759	610	2,688
Penetrating Injury	96	106	137	96	435
Subtotal for UCDCMC	694	827	896	706	3,123
Totals for Sacramento County	911	1,078	1,128	946	4,063

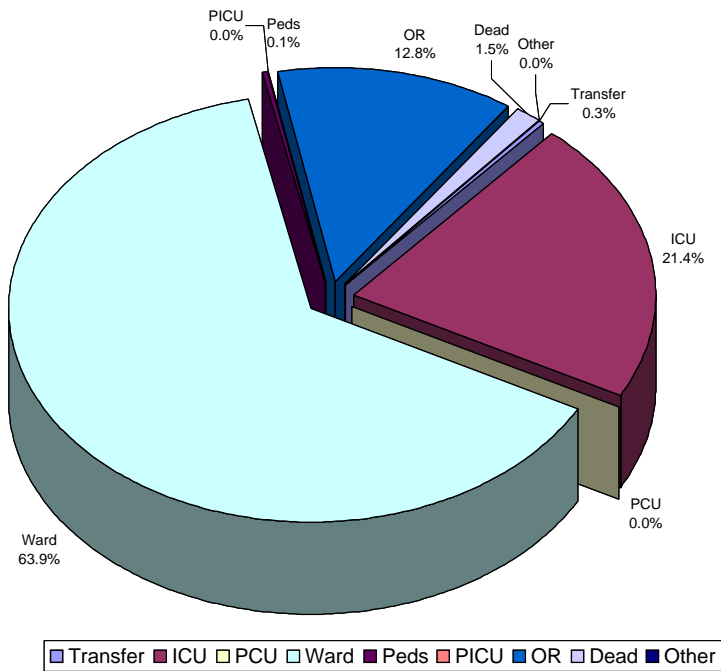
Trauma Patient Injury Type January Through December 2005

For Patients with ED Dispositions of Admitted, Died, or Transferred



Trauma Patient Emergency Department Disposition
 January Through December 2005
 For Patients with ED Dispositions of Admitted, Died, or Transferred

	Transfer	ICU	PCU	Ward	Peds	PICU	OR	Dead	Other	Total
Mercy San Juan Hospital										
1 st Qtr	4	58	0	101	0	0	27	6	0	196
2 nd Qtr	2	74	0	123	3	0	26	1	0	229
3 rd Qtr	2	71	0	99	3	0	37	5	0	217
4 th Qtr	4	77	0	110	0	0	28	5	0	224
All Qtrs	12	280	0	433	6	0	118	17	0	866
Sutter Roseville Medical Center										
1 st Qtr	0	11	0	4	0	0	6	0	0	21
2 nd Qtr	0	4	0	12	0	0	6	0	0	22
3 rd Qtr	0	5	0	6	0	0	3	1	0	15
4 th Qtr	0	10	0	3	0	0	3	0	0	16
All Qtrs	0	30	0	25	0	0	18	1	0	74
UC Davis Medical Center										
1 st Qtr	0	101	0	491	0	0	96	6	0	694
2 nd Qtr	0	162	0	560	0	0	96	9	0	827
3 rd Qtr	0	163	0	608	0	0	108	17	0	896
4 th Qtr	0	132	0	479	0	0	83	12	0	706
All Qtrs	0	558	0	2,138	0	0	383	44	0	3,123
Totals	12	868	0	2,596	6	0	519	62	0	4,063



Admitted Trauma Patient Final Disposition
 January Through December 2005
 For Admitted Patients

	Unk	Home	Home Health	Home-Rehab	SNF	ICF	Rehab	Transfer	Dead	Other	Total
Mercy San Juan Medical Center											
1 st Qtr	2	145	6	0	5	3	5	11	4	5	186
2 nd Qtr	6	164	7	3	4	1	9	21	4	7	226
3 rd Qtr	5	158	2	1	2	1	8	14	12	7	210
4 th Qtr	16	142	5	1	10	0	8	18	6	9	215
All Qtrs	29	609	20	5	21	5	30	64	26	28	837
Sutter Roseville Medical Center											
1 st Qtr	0	15	0	0	1	0	1	3	1	0	21
2 nd Qtr	0	17	0	0	1	0	1	3	0	0	22
3 rd Qtr	0	11	0	0	0	0	0	2	0	1	14
4 th Qtr	0	11	0	0	0	0	1	3	1	0	16
All Qtrs	0	54	0	0	2	0	3	11	2	1	73
UC Davis Medical Center											
1 st Qtr	17	559	0	0	10	0	7	62	13	20	688
2 nd Qtr	36	659	0	0	7	0	6	68	15	27	818
3 rd Qtr	72	676	0	0	12	0	11	68	19	21	879
4 th Qtr	328	309	0	0	9	0	3	27	7	11	694
All Qtrs	453	2,203	0	0	38	0	27	225	54	79	3,079
Totals	482	2,866	20	5	61	5	60	300	82	108	3,989

Trauma Patient Mechanism of Injury

January Through December 2005

For Patients with ED Dispositions of Admitted, Died, or Transferred

	Unk	MVC	MCC	Pedes	GSW	SW	Fall	Assault	Bike	Other	Total
Mercy San Juan Medical Center											
1 st Qtr	2	89	14	15	7	14	30	12	8	5	196
2 nd Qtr	5	100	22	15	7	9	33	16	14	8	229
3 rd Qtr	6	99	29	7	10	9	23	18	10	6	217
4 th Qtr	11	109	31	17	4	4	25	7	10	6	224
All Qtrs	24	397	96	54	28	36	111	53	42	25	866
Sutter Roseville Medical Center											
1 st Qtr	6	6	0	0	1	0	6	1	1	0	21
2 nd Qtr	6	5	1	0	2	1	5	2	0	0	22
3 rd Qtr	6	2	2	0	0	2	0	3	0	0	15
4 th Qtr	9	4	0	0	0	0	2	1	0	0	16
All Qtrs	27	17	3	0	3	3	13	7	1	0	74
UC Davis Medical Center											
1 st Qtr	4	276	39	46	75	86	70	58	18	22	694
2 nd Qtr	1	313	48	55	94	90	86	75	36	29	827
3 rd Qtr	2	285	62	53	131	114	85	78	32	54	896
4 th Qtr	9	302	30	60	43	51	94	57	30	30	706
All Qtrs	16	1,176	179	214	343	341	335	268	116	135	3,123
Totals	67	1,590	278	268	374	380	459	328	159	160	4,063

Trauma Patient Mode of Arrival January Through December 2005

For Patients with ED Dispositions of Admitted, Died, or Transferred

	Unknown	Ambulance	Helicopter	Police	Public Safety	Private Vehicle	Walk-In	Total
Mercy San Juan Medical Center								
1 st Qtr	2	184	1	0	0	9	0	196
2 nd Qtr	3	217	2	0	0	6	1	229
3 rd Qtr	2	209	0	0	0	4	2	217
4 th Qtr	11	198	0	0	0	6	9	224
All Qtrs	18	808	3	0	0	25	12	866
Sutter Roseville Medical Center								
1 st Qtr	0	14	1	0	0	6	0	21
2 nd Qtr	0	12	3	0	0	7	0	22
3 rd Qtr	0	8	1	0	0	6	0	15
4 th Qtr	0	13	1	0	0	2	0	16
All Qtrs	0	47	6	0	0	21	0	74
UC Davis Medical Center								
1 st Qtr	87	460	12	0	95	40	0	694
2 nd Qtr	227	466	25	0	69	40	0	827
3 rd Qtr	232	542	24	0	55	43	0	896
4 th Qtr	82	478	20	0	81	45	0	706
All Qtrs	628	1,946	81	0	300	168	0	3,123
Totals	646	2,801	90	0	300	214	12	4,063

Trauma Patient Age Groups January Through December 2005

For Patients with ED Dispositions of Admitted, Died, or Transferred

	Unk	<5 years	5-14 years	15-18 years	19-44 years	45-64 years	>64 years	Total
Mercy San Juan Medical Center								
1 st Qtr	0	0	1	18	111	48	18	196
2 nd Qtr	0	0	1	31	108	61	28	229
3 rd Qtr	0	0	0	19	131	48	19	217
4 th Qtr	0	3	4	15	113	54	35	224
All Qtrs	0	3	6	83	463	211	100	866
Sutter Roseville Medical Center								
1 st Qtr	0	1	4	2	10	2	2	21
2 nd Qtr	0	1	2	3	11	3	2	22
3 rd Qtr	0	0	0	0	11	3	1	15
4 th Qtr	0	0	2	0	9	1	4	16
All Qtrs	0	2	8	5	41	9	9	74
UC Davis Medical Center								
1 st Qtr	0	25	38	66	358	159	48	694
2 nd Qtr	0	31	66	69	446	148	67	827
3 rd Qtr	0	36	65	57	496	174	68	896
4 th Qtr	0	29	45	79	338	147	68	706
All Qtrs	0	121	214	271	1,638	628	251	3,123
Totals	0	126	228	359	2,142	848	360	4,063

Trauma Patient Death by Mechanism of Injury

January Through December 2005

For Patients with ED Dispositions of Admitted or Died

	Unk	MVC	MCC	Pedes	GSW	SW	Fall	Assault	Bike	Other	Total
Died in ED	1	13	5	8	24	4	0	1	3	3	62
Died after Admission	3	22	1	9	10	6	22	8	0	1	82
Total	4	35	6	17	34	10	22	9	3	4	144

Trauma Patient Mechanism of Injury by Age Group

January Through December 2005

For Patients with ED Dispositions of Admitted, Died, or Transferred

	Unk	MVC	MCC	Pedes	GSW	SW	Fall	Assault	Bike	Other	Total
<5 years	3	44	1	16	6	6	32	7	5	6	126
5-14 years	5	76	12	29	27	15	23	2	25	14	228
15-18 years	7	155	13	20	43	39	18	23	25	16	359
19-44 years	37	865	178	114	244	243	128	195	55	83	2,142
45-64 years	7	302	70	72	43	64	127	91	41	31	848
>64 years	8	148	4	17	11	13	131	10	8	10	360
Total	67	1,590	278	268	374	380	459	328	159	160	4,063

Four Year Summary

For Patients with ED Dispositions of Admitted, Died, or Transferred

	2002	2003	2004	2005
Mercy San Juan Medical Center	642	859	943	866
Sutter Roseville Medical Center	67	58	85	74
UC Davis Medical Center	1,845	1,992	2,708	3,123
Totals for Sacramento County	2,554	2,909	3,736	4,063