

Sacramento County
Summary Trauma Report
January Through December 2004

March 7, 2005

Based on Trauma Registry Data
Provided By
Mercy San Juan Medical Center
Sutter Roseville Medical Center
and UC Davis Medical Center

Prepared For
Sacramento County EMS Agency
9616 Micron Avenue, Suite 635
Sacramento, CA 95827
(916) 875-9753

By



(916) 488-3222

Notes Regarding
January Through December 2004
Summary Trauma Report

1. UC Davis Medical Center records submitted with a Mode of Arrival of Public Safety, that also indicated a Fire Department as the Transporting Agency, were changed so that the Mode of Arrival would be reported as Ambulance rather than Public Safety.

2. This report includes all patients from geographic Sacramento County who met trauma triage criteria, with one of the following Emergency Department Dispositions:
 - > Admitted
 - > Died in ED
 - > Transferred To Another Acute Care Facility From ED

In order to provide like information for the three trauma centers, other patient records submitted were not included in this report.

Trauma Patient Volume for Sacramento County Trauma Centers January Through December 2004

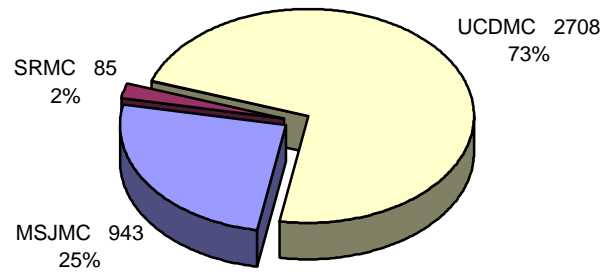
For Patients with ED Dispositions of Admitted, Died, or Transferred

	1 st Qtr	2 nd Qtr	3 rd Qtr	4 th Qtr	All Quarters
Mercy San Juan Medical Center					
Admitted	224	218	274	209	925
Died in ED	2	3	4	3	12
Transferred To Another Acute Care Facility From ED	1	1	2	2	6
Subtotal for MSJMC	227	222	280	214	943
Sutter Roseville Medical Center					
Admitted	15	30	20	18	83
Died in ED	0	0	0	0	0
Transferred To Another Acute Care Facility From ED	0	1	0	1	2
Subtotal for SRMC	15	31	20	19	85
UC Davis Medical Center					
Admitted	597	651	721	692	2,661
Died in ED	9	15	14	9	47
Transferred To Another Acute Care Facility From ED	0	0	0	0	0
Subtotal for UCDCMC	606	666	735	701	2,708
Totals for Sacramento County	848	919	1,035	934	3,736

Trauma Patient Volume for Sacramento County Trauma Centers January Through December 2004

For Patients with ED Dispositions of Admitted, Died, or Transferred





Trauma Patient Injury Type

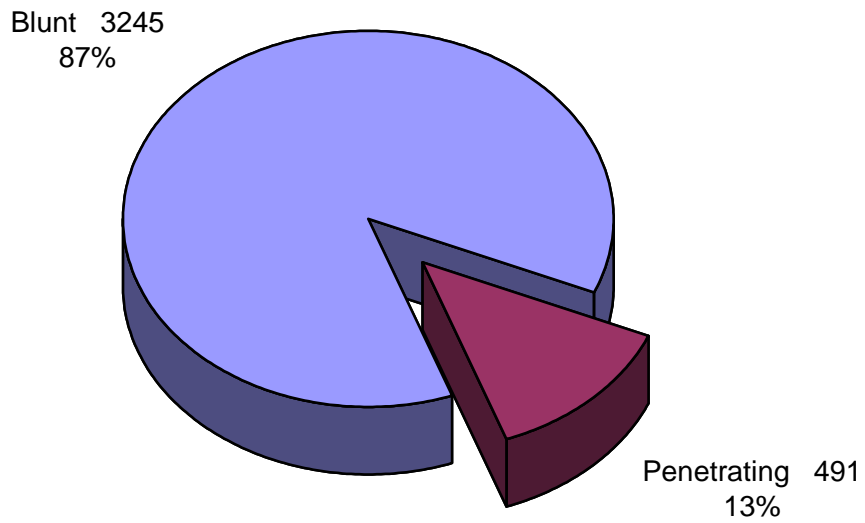
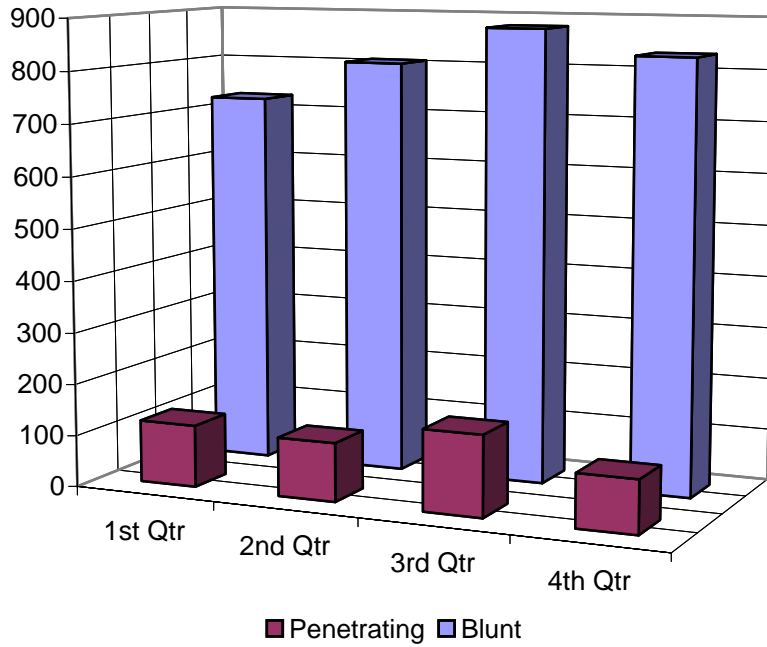
January Through December 2004

For Patients with ED Dispositions of Admitted, Died, or Transferred

	1 st Qtr	2 nd Qtr	3 rd Qtr	4 th Qtr	All Quarters
Mercy San Juan Medical Center					
Blunt Injury	201	202	241	200	844
Penetrating Injury	26	20	39	14	99
Subtotal for MSJMC	227	222	280	214	943
Sutter Roseville Medical Center					
Blunt Injury	13	30	19	18	80
Penetrating Injury	2	1	1	1	5
Subtotal for SRMC	15	31	20	19	85
UC Davis Medical Center					
Blunt Injury	514	574	619	614	2,321
Penetrating Injury	92	92	116	87	387
Subtotal for UCDCMC	606	666	735	701	2,708
Totals for Sacramento County	848	919	1,035	934	3,736

Trauma Patient Injury Type January Through December 2004

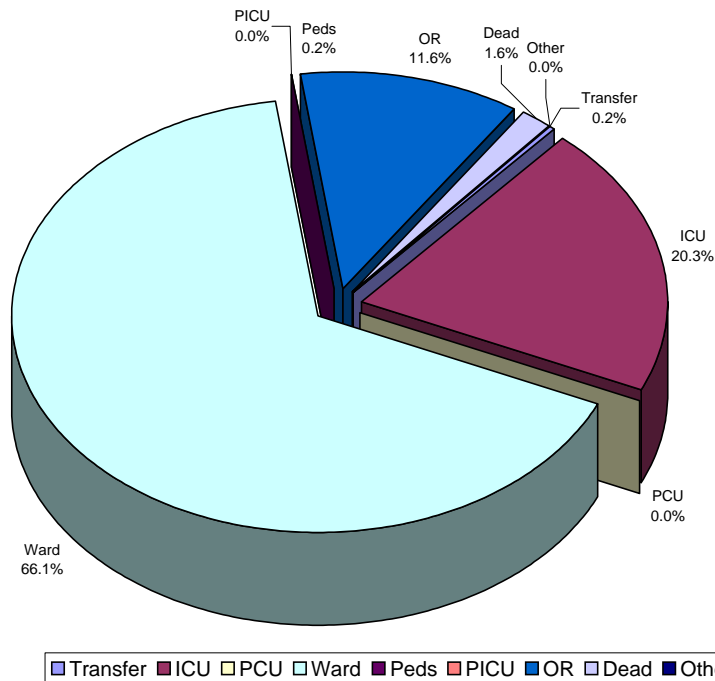
For Patients with ED Dispositions of Admitted, Died, or Transferred



Trauma Patient Emergency Department Disposition January Through December 2004

For Patients with ED Dispositions of Admitted, Died, or Transferred

	Transfer	ICU	PCU	Ward	Peds	PICU	OR	Dead	Other	Total
Mercy San Juan Hospital										
1 st Qtr	1	60	0	137	2	0	25	2	0	227
2 nd Qtr	1	76	0	116	0	0	26	3	0	222
3 rd Qtr	2	72	0	155	3	0	44	4	0	280
4 th Qtr	2	60	0	120	1	0	28	3	0	214
All Qtrs	6	268	0	528	6	0	123	12	0	943
Sutter Roseville Medical Center										
1 st Qtr	0	4	0	8	0	0	3	0	0	15
2 nd Qtr	1	17	0	7	0	0	6	0	0	31
3 rd Qtr	0	5	0	9	0	0	6	0	0	20
4 th Qtr	1	9	0	7	0	0	2	0	0	19
All Qtrs	2	35	0	31	0	0	17	0	0	85
UC Davis Medical Center										
1 st Qtr	0	122	0	404	0	0	71	9	0	606
2 nd Qtr	0	111	0	471	0	0	69	15	0	666
3 rd Qtr	0	103	0	533	0	0	85	14	0	735
4 th Qtr	0	121	0	501	0	0	70	9	0	701
All Qtrs	0	457	0	1,909	0	0	295	47	0	2,708
Totals	8	760	0	2,468	6	0	435	59	0	3,736



Admitted Trauma Patient Final Disposition

January Through December 2004

For Admitted Patients

	Unk	Home	Home Health	Home-Rehab	SNF	ICF	Rehab	Transfer	Dead	Other	Total
Mercy San Juan Medical Center											
1 st Qtr	3	170	12	0	3	0	2	21	3	10	224
2 nd Qtr	1	161	11	1	9	0	6	12	13	4	218
3 rd Qtr	2	216	9	0	9	0	4	18	5	11	274
4 th Qtr	2	154	8	0	8	0	8	19	6	4	209
All Qtrs	8	701	40	1	29	0	20	70	27	29	925
Sutter Roseville Medical Center											
1 st Qtr	0	12	0	0	0	0	1	1	1	0	15
2 nd Qtr	0	27	0	0	2	0	1	0	0	0	30
3 rd Qtr	0	16	0	0	2	0	0	0	2	0	20
4 th Qtr	0	14	0	0	0	0	0	2	1	1	18
All Qtrs	0	69	0	0	4	0	2	3	4	1	83
UC Davis Medical Center											
1 st Qtr	76	425	0	0	7	0	9	48	17	15	597
2 nd Qtr	89	481	0	0	5	0	5	47	9	15	651
3 rd Qtr	220	427	0	0	4	0	4	35	14	17	721
4 th Qtr	302	354	0	0	5	0	4	21	2	4	692
All Qtrs	687	1,687	0	0	21	0	22	151	42	51	2,661
Totals	695	2,457	40	1	54	0	44	224	73	81	3,669

Trauma Patient Mechanism of Injury

January Through December 2004

For Patients with ED Dispositions of Admitted, Died, or Transferred

	Unk	MVC	MCC	Pedes	GSW	SW	Fall	Assault	Bike	Other	Total
Mercy San Juan Medical Center											
1 st Qtr	1	102	23	14	11	11	22	17	16	10	227
2 nd Qtr	5	93	29	18	8	10	21	20	11	7	222
3 rd Qtr	3	103	33	17	20	14	35	28	15	12	280
4 th Qtr	1	100	23	14	5	9	32	19	5	6	214
All Qtrs	10	398	108	63	44	44	110	84	47	35	943
Sutter Roseville Medical Center											
1 st Qtr	0	4	0	2	1	1	5	2	0	0	15
2 nd Qtr	0	8	3	1	0	2	7	2	3	5	31
3 rd Qtr	2	7	4	0	1	0	3	3	0	0	20
4 th Qtr	4	8	1	1	0	0	2	1	1	1	19
All Qtrs	6	27	8	4	2	3	17	8	4	6	85
UC Davis Medical Center											
1 st Qtr	0	245	32	41	48	75	63	48	29	25	606
2 nd Qtr	2	250	41	64	48	80	82	36	38	25	666
3 rd Qtr	1	265	44	62	91	69	77	65	35	26	735
4 th Qtr	3	299	26	53	68	66	80	56	25	25	701
All Qtrs	6	1,059	143	220	255	290	302	205	127	101	2,708
Totals	22	1,484	259	287	301	337	429	297	178	142	3,736

Trauma Patient Mode of Arrival

January Through December 2004

For Patients with ED Dispositions of Admitted, Died, or Transferred

	Unknown	Ambulance	Helicopter	Police	Public Safety	Private Vehicle	Walk-In	Total
Mercy San Juan Medical Center								
1 st Qtr	0	207	0	1	0	18	1	227
2 nd Qtr	1	201	3	0	0	17	0	222
3 rd Qtr	1	249	0	0	0	30	0	280
4 th Qtr	3	197	1	0	0	13	0	214
All Qtrs	5	854	4	1	0	78	1	943
Sutter Roseville Medical Center								
1 st Qtr	0	11	2	0	0	2	0	15
2 nd Qtr	0	19	1	0	0	11	0	31
3 rd Qtr	0	11	4	0	0	5	0	20
4 th Qtr	0	12	3	1	0	3	0	19
All Qtrs	0	53	10	1	0	21	0	85
UC Davis Medical Center								
1 st Qtr	2	453	25	0	80	46	0	606
2 nd Qtr	7	476	30	0	95	58	0	666
3 rd Qtr	73	490	24	0	105	43	0	735
4 th Qtr	68	474	19	0	91	49	0	701
All Qtrs	150	1,893	98	0	371	196	0	2,708
Totals	155	2,800	112	2	371	295	1	3,736

Trauma Patient Age Groups

January Through December 2004

For Patients with ED Dispositions of Admitted, Died, or Transferred

	Unk	<5 years	5-14 years	15-18 years	19-44 years	45-64 years	>64 years	Total
Mercy San Juan Medical Center								
1 st Qtr	0	1	1	25	131	47	22	227
2 nd Qtr	0	0	1	22	133	42	24	222
3 rd Qtr	0	0	3	20	174	56	27	280
4 th Qtr	0	0	3	17	122	48	24	214
All Qtrs	0	1	8	84	560	193	97	943
Sutter Roseville Medical Center								
1 st Qtr	0	0	0	2	5	6	2	15
2 nd Qtr	0	1	0	6	15	5	4	31
3 rd Qtr	0	0	0	4	11	2	3	20
4 th Qtr	0	1	0	3	10	4	1	19
All Qtrs	0	2	0	15	41	17	10	85
UC Davis Medical Center								
1 st Qtr	0	23	56	56	292	121	58	606
2 nd Qtr	0	36	62	56	320	128	64	666
3 rd Qtr	0	39	63	55	407	122	49	735
4 th Qtr	0	24	49	69	366	136	57	701
All Qtrs	0	122	230	236	1,385	507	228	2,708
Totals	0	125	238	335	1,986	717	335	3,736

Trauma Patient Death by Mechanism of Injury

January Through December 2004

For Patients with ED Dispositions of Admitted or Died

	Unk	MVC	MCC	Pedes	GSW	SW	Fall	Assault	Bike	Other	Total
Died in ED	0	10	3	12	19	7	3	2	1	2	59
Died after Admission	2	16	7	15	2	5	19	5	0	2	73
Total	2	26	10	27	21	12	22	7	1	4	132

Trauma Patient Mechanism of Injury by Age Group

January Through December 2004

For Patients with ED Dispositions of Admitted, Died, or Transferred

	Unk	MVC	MCC	Pedes	GSW	SW	Fall	Assault	Bike	Other	Total
<5 years	1	32	3	25	6	4	32	7	4	11	125
5-14 years	2	73	17	32	12	16	32	6	38	10	238
15-18 years	2	167	17	20	36	39	13	15	11	15	335
19-44 years	12	805	168	120	210	212	132	195	68	64	1,986
45-64 years	5	271	50	64	28	53	104	67	42	33	717
>64 years	0	136	4	26	9	13	116	7	15	9	335
Total	22	1,484	259	287	301	337	429	297	178	142	3,736

Four Year Summary

For Patients with ED Dispositions of Admitted, Died, or Transferred

	2001	2002	2003	2004
Mercy San Juan Medical Center	649	642	859	943
Sutter Roseville Medical Center	90	67	58	85
UC Davis Medical Center	1,606	1,845	1,992	2,708
Totals for Sacramento County	2,345	2,554	2,909	3,736