

Sacramento County  
Summary Trauma Report  
January Through December 2003

March 15, 2004

Based on Trauma Registry Data  
Provided By  
Mercy San Juan Medical Center  
Sutter Roseville Medical Center  
and UC Davis Medical Center

Prepared For  
Sacramento County EMS Agency  
9616 Micron Avenue, Suite 635  
Sacramento, CA 95827  
(916) 875-9753

By



(916) 488-3222

Notes Regarding  
January Through December 2003  
Summary Trauma Report

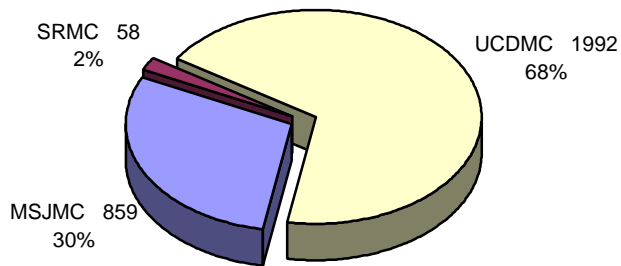
1. UC Davis Medical Center records submitted with a Mode of Arrival of Public Safety, that also indicated a Fire Department as the Transporting Agency, were changed so that the Mode of Arrival would be reported as Ambulance rather than Public Safety.
  
2. This report includes all patients from geographic Sacramento County who met trauma triage criteria, with one of the following Emergency Department Dispositions:
  - > Admitted
  - > Died in ED
  - > Transferred To Another Acute Care Facility From ED

In order to provide like information for the three trauma centers, other patient records submitted were not included in this report.

Trauma Patient Volume for Sacramento County Trauma Centers  
 January Through December 2003  
 For Patients with ED Dispositions of Admitted, Died, or Transferred

	1 <sup>st</sup> Qtr	2 <sup>nd</sup> Qtr	3 <sup>rd</sup> Qtr	4 <sup>th</sup> Qtr	All Quarters
Mercy San Juan Medical Center					
Admitted	183	190	258	203	834
Died in ED	4	1	8	7	20
Transferred To Another Acute Care Facility From ED	0	1	1	3	5
Subtotal for MSJMC	187	192	267	213	859
Sutter Roseville Medical Center					
Admitted	12	14	16	15	57
Died in ED	0	0	0	0	0
Transferred To Another Acute Care Facility From ED	1	0	0	0	1
Subtotal for SRMC	13	14	16	15	58
UC Davis Medical Center					
Admitted	424	387	591	546	1,948
Died in ED	13	4	14	12	43
Transferred To Another Acute Care Facility From ED	1	0	0	0	1
Subtotal for UCDCMC	438	391	605	558	1,992
Totals for Sacramento County	638	597	888	786	2,909

Trauma Patient Volume for Sacramento County Trauma Centers  
 January Through December 2003  
 For Patients with ED Dispositions of Admitted, Died, or Transferred



# Trauma Patient Injury Type

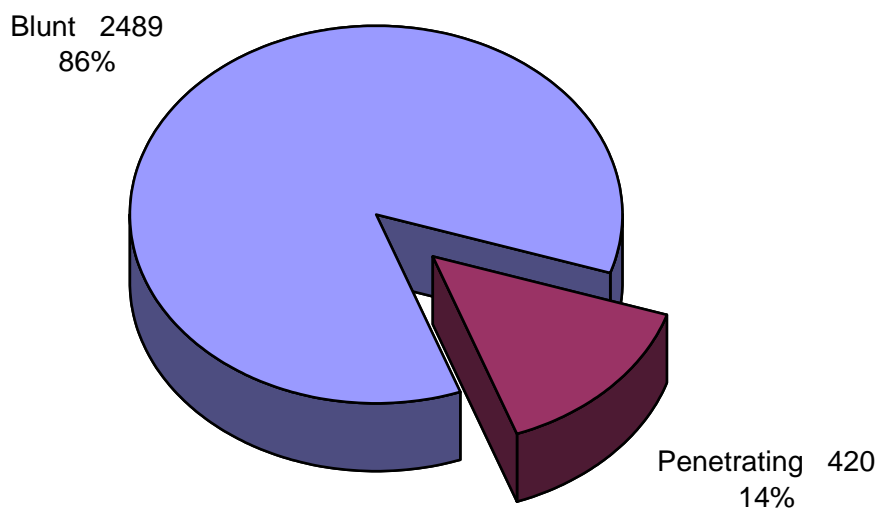
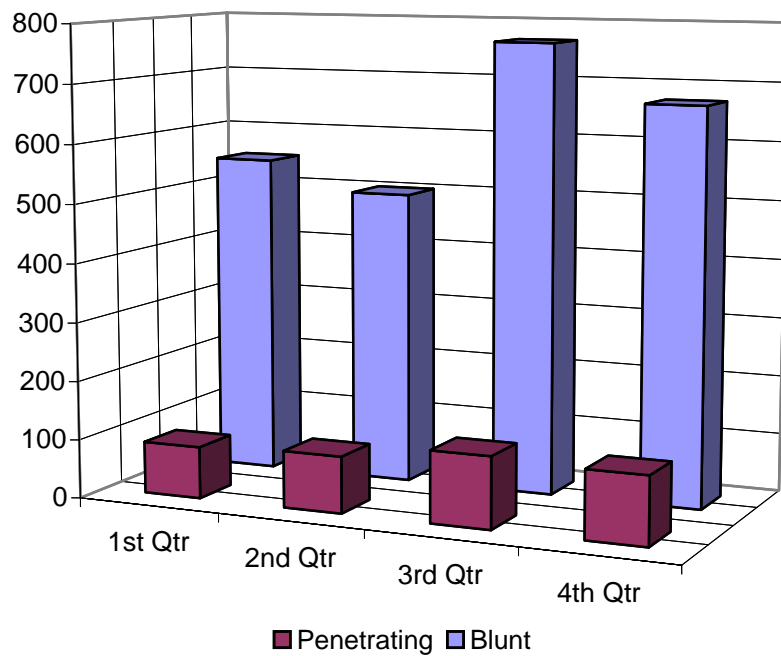
## January Through December 2003

For Patients with ED Dispositions of Admitted, Died, or Transferred

	1 <sup>st</sup> Qtr	2 <sup>nd</sup> Qtr	3 <sup>rd</sup> Qtr	4 <sup>th</sup> Qtr	All Quarters
Mercy San Juan Medical Center					
Blunt Injury	166	172	234	187	759
Penetrating Injury	21	20	33	26	100
Subtotal for MSJMC	187	192	267	213	859
Sutter Roseville Medical Center					
Blunt Injury	12	12	16	14	54
Penetrating Injury	1	2	0	1	4
Subtotal for SRMC	13	14	16	15	58
UC Davis Medical Center					
Blunt Injury	372	317	517	470	1,676
Penetrating Injury	66	74	88	88	316
Subtotal for UCDCMC	438	391	605	558	1,992
Totals for Sacramento County	638	597	888	786	2,909

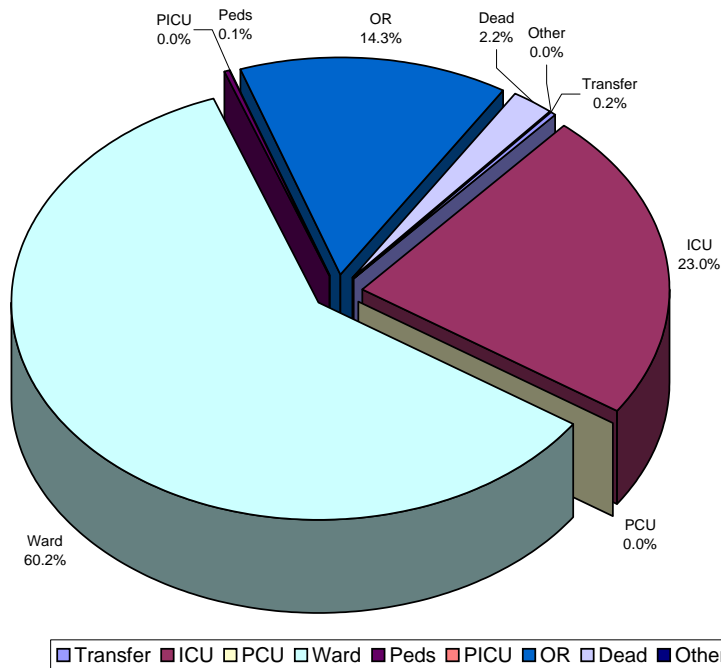
# Trauma Patient Injury Type January Through December 2003

For Patients with ED Dispositions of Admitted, Died, or Transferred



Trauma Patient Emergency Department Disposition  
 January Through December 2003  
 For Patients with ED Dispositions of Admitted, Died, or Transferred

	Transfer	ICU	PCU	Ward	Peds	PICU	OR	Dead	Other	Total
Mercy San Juan Hospital										
1 <sup>st</sup> Qtr	0	66	0	93	0	0	24	4	0	187
2 <sup>nd</sup> Qtr	1	63	0	101	0	0	26	1	0	192
3 <sup>rd</sup> Qtr	1	78	0	149	0	0	31	8	0	267
4 <sup>th</sup> Qtr	3	72	0	107	1	0	23	7	0	213
All Qtrs	5	279	0	450	1	0	104	20	0	859
Sutter Roseville Medical Center										
1 <sup>st</sup> Qtr	1	5	0	3	2	0	2	0	0	13
2 <sup>nd</sup> Qtr	0	4	0	5	0	0	5	0	0	14
3 <sup>rd</sup> Qtr	0	2	0	9	0	0	5	0	0	16
4 <sup>th</sup> Qtr	0	7	0	4	1	0	3	0	0	15
All Qtrs	1	18	0	21	3	0	15	0	0	58
UC Davis Medical Center										
1 <sup>st</sup> Qtr	1	80	0	274	0	0	70	13	0	438
2 <sup>nd</sup> Qtr	0	77	0	256	0	0	54	4	0	391
3 <sup>rd</sup> Qtr	0	110	0	390	0	0	91	14	0	605
4 <sup>th</sup> Qtr	0	105	0	360	0	0	81	12	0	558
All Qtrs	1	372	0	1,280	0	0	296	43	0	1,992
Totals	7	669	0	1,751	4	0	415	63	0	2,909



Admitted Trauma Patient Final Disposition  
 January Through December 2003  
 For Admitted Patients

	Unk	Home	Home Health	Home-Rehab	SNF	ICF	Rehab	Transfer	Dead	Other	Total
Mercy San Juan Medical Center											
1 <sup>st</sup> Qtr	0	145	3	0	1	0	3	15	6	10	183
2 <sup>nd</sup> Qtr	0	132	5	0	6	0	4	27	5	11	190
3 <sup>rd</sup> Qtr	0	201	7	0	5	0	5	30	3	7	258
4 <sup>th</sup> Qtr	0	142	12	1	3	3	10	13	7	12	203
All Qtrs	0	620	27	1	15	3	22	85	21	40	834
Sutter Roseville Medical Center											
1 <sup>st</sup> Qtr	0	9	0	0	1	0	0	1	1	0	12
2 <sup>nd</sup> Qtr	0	12	0	0	0	0	0	0	1	1	14
3 <sup>rd</sup> Qtr	0	13	0	0	0	0	1	1	1	0	16
4 <sup>th</sup> Qtr	0	11	0	0	1	0	1	0	2	0	15
All Qtrs	0	45	0	0	2	0	2	2	5	1	57
UC Davis Medical Center											
1 <sup>st</sup> Qtr	20	332	0	0	8	0	5	28	20	11	424
2 <sup>nd</sup> Qtr	32	301	0	0	13	0	2	22	5	12	387
3 <sup>rd</sup> Qtr	41	455	0	0	17	0	8	46	10	14	591
4 <sup>th</sup> Qtr	40	422	0	0	9	0	8	33	20	14	546
All Qtrs	133	1,510	0	0	47	0	23	129	55	51	1,948
Totals	133	2,175	27	1	64	3	47	216	81	92	2,839

# Trauma Patient Mechanism of Injury

## January Through December 2003

For Patients with ED Dispositions of Admitted, Died, or Transferred

	Unk	MVC	MCC	Pedes	GSW	SW	Fall	Assault	Bike	Other	Total
Mercy San Juan Medical Center											
1 <sup>st</sup> Qtr	0	82	13	13	4	16	28	21	7	3	187
2 <sup>nd</sup> Qtr	1	70	28	9	6	13	29	16	8	12	192
3 <sup>rd</sup> Qtr	4	104	29	16	12	15	32	23	20	12	267
4 <sup>th</sup> Qtr	5	88	11	24	9	14	27	17	7	11	213
All Qtrs	10	344	81	62	31	58	116	77	42	38	859
Sutter Roseville Medical Center											
1 <sup>st</sup> Qtr	0	2	1	1	0	0	5	1	1	2	13
2 <sup>nd</sup> Qtr	0	4	1	0	0	2	3	2	1	1	14
3 <sup>rd</sup> Qtr	0	4	0	0	0	2	4	0	1	5	16
4 <sup>th</sup> Qtr	0	6	0	1	1	0	6	0	0	1	15
All Qtrs	0	16	2	2	1	4	18	3	3	9	58
UC Davis Medical Center											
1 <sup>st</sup> Qtr	5	153	26	60	35	38	52	37	19	13	438
2 <sup>nd</sup> Qtr	4	143	34	28	37	48	38	31	21	7	391
3 <sup>rd</sup> Qtr	6	212	45	48	64	52	70	52	35	21	605
4 <sup>th</sup> Qtr	0	198	28	36	79	60	69	41	28	19	558
All Qtrs	15	706	133	172	215	198	229	161	103	60	1,992
Totals	25	1,066	216	236	247	260	363	241	148	107	2,909



# Trauma Patient Mode of Arrival

## January Through December 2003

For Patients with ED Dispositions of Admitted, Died, or Transferred

	Unknown	Ambulance	Helicopter	Police	Public Safety	Private Vehicle	Walk-In	Total
Mercy San Juan Medical Center								
1 <sup>st</sup> Qtr	0	170	1	0	0	16	0	187
2 <sup>nd</sup> Qtr	0	176	0	0	0	16	0	192
3 <sup>rd</sup> Qtr	0	253	3	0	0	11	0	267
4 <sup>th</sup> Qtr	0	199	1	0	0	13	0	213
All Qtrs	0	798	5	0	0	56	0	859
Sutter Roseville Medical Center								
1 <sup>st</sup> Qtr	0	7	1	0	0	5	0	13
2 <sup>nd</sup> Qtr	0	9	2	0	0	3	0	14
3 <sup>rd</sup> Qtr	0	9	1	0	0	6	0	16
4 <sup>th</sup> Qtr	2	9	3	0	0	1	0	15
All Qtrs	2	34	7	0	0	15	0	58
UC Davis Medical Center								
1 <sup>st</sup> Qtr	1	320	19	0	56	42	0	438
2 <sup>nd</sup> Qtr	1	274	19	0	59	38	0	391
3 <sup>rd</sup> Qtr	1	425	41	1	80	57	0	605
4 <sup>th</sup> Qtr	2	400	24	0	65	67	0	558
All Qtrs	5	1,419	103	1	260	204	0	1,992
Totals	7	2,251	115	1	260	275	0	2,909

# Trauma Patient Age Groups

## January Through December 2003

For Patients with ED Dispositions of Admitted, Died, or Transferred

	Unk	<5 years	5-14 years	15-18 years	19-44 years	45-64 years	>64 years	Total
Mercy San Juan Medical Center								
1 <sup>st</sup> Qtr	0	0	2	19	119	35	12	187
2 <sup>nd</sup> Qtr	0	1	1	20	104	39	27	192
3 <sup>rd</sup> Qtr	0	0	2	19	147	69	30	267
4 <sup>th</sup> Qtr	0	1	4	29	115	46	18	213
All Qtrs	0	2	9	87	485	189	87	859
Sutter Roseville Medical Center								
1 <sup>st</sup> Qtr	0	2	1	1	5	2	2	13
2 <sup>nd</sup> Qtr	0	0	0	1	10	3	0	14
3 <sup>rd</sup> Qtr	0	0	0	2	11	2	1	16
4 <sup>th</sup> Qtr	0	0	1	1	5	6	2	15
All Qtrs	0	2	2	5	31	13	5	58
UC Davis Medical Center								
1 <sup>st</sup> Qtr	0	14	30	37	227	86	44	438
2 <sup>nd</sup> Qtr	0	7	26	34	209	83	32	391
3 <sup>rd</sup> Qtr	0	24	59	62	298	112	50	605
4 <sup>th</sup> Qtr	0	14	48	57	277	110	52	558
All Qtrs	0	59	163	190	1,011	391	178	1,992
Totals	0	63	174	282	1,527	593	270	2,909

## Trauma Patient Death by Mechanism of Injury

January Through December 2003

For Patients with ED Dispositions of Admitted or Died

	Unk	MVC	MCC	Pedes	GSW	SW	Fall	Assault	Bike	Other	Total
Died in ED	0	10	3	12	25	4	3	3	3	0	63
Died after Admission	1	25	7	10	9	5	15	3	1	5	81
Total	1	35	10	22	34	9	18	6	4	5	144

## Trauma Patient Mechanism of Injury by Age Group

January Through December 2003

For Patients with ED Dispositions of Admitted, Died, or Transferred

	Unk	MVC	MCC	Pedes	GSW	SW	Fall	Assault	Bike	Other	Total
<5 years	0	12	1	17	3	3	14	6	2	5	63
5-14 years	1	45	12	34	14	8	20	6	26	8	174
15-18 years	4	130	13	21	36	23	15	18	11	11	282
19-44 years	12	578	142	84	150	174	126	150	51	60	1,527
45-64 years	5	195	42	46	32	47	103	53	49	21	593
>64 years	3	106	6	34	12	5	85	8	9	2	270
Total	25	1,066	216	236	247	260	363	241	148	107	2,909

## Four Year Summary

For Patients with ED Dispositions of Admitted, Died, or Transferred

	2000	2001	2002	2003
Mercy San Juan Medical Center	734	649	642	859
Sutter Roseville Medical Center	77	90	67	58
UC Davis Medical Center	1,677	1,606	1,845	1,992
Totals for Sacramento County	2,488	2,345	2,554	2,909