

Sacramento County
Report For January Through December 2008
9-1-1 Paramedic Ambulance Services

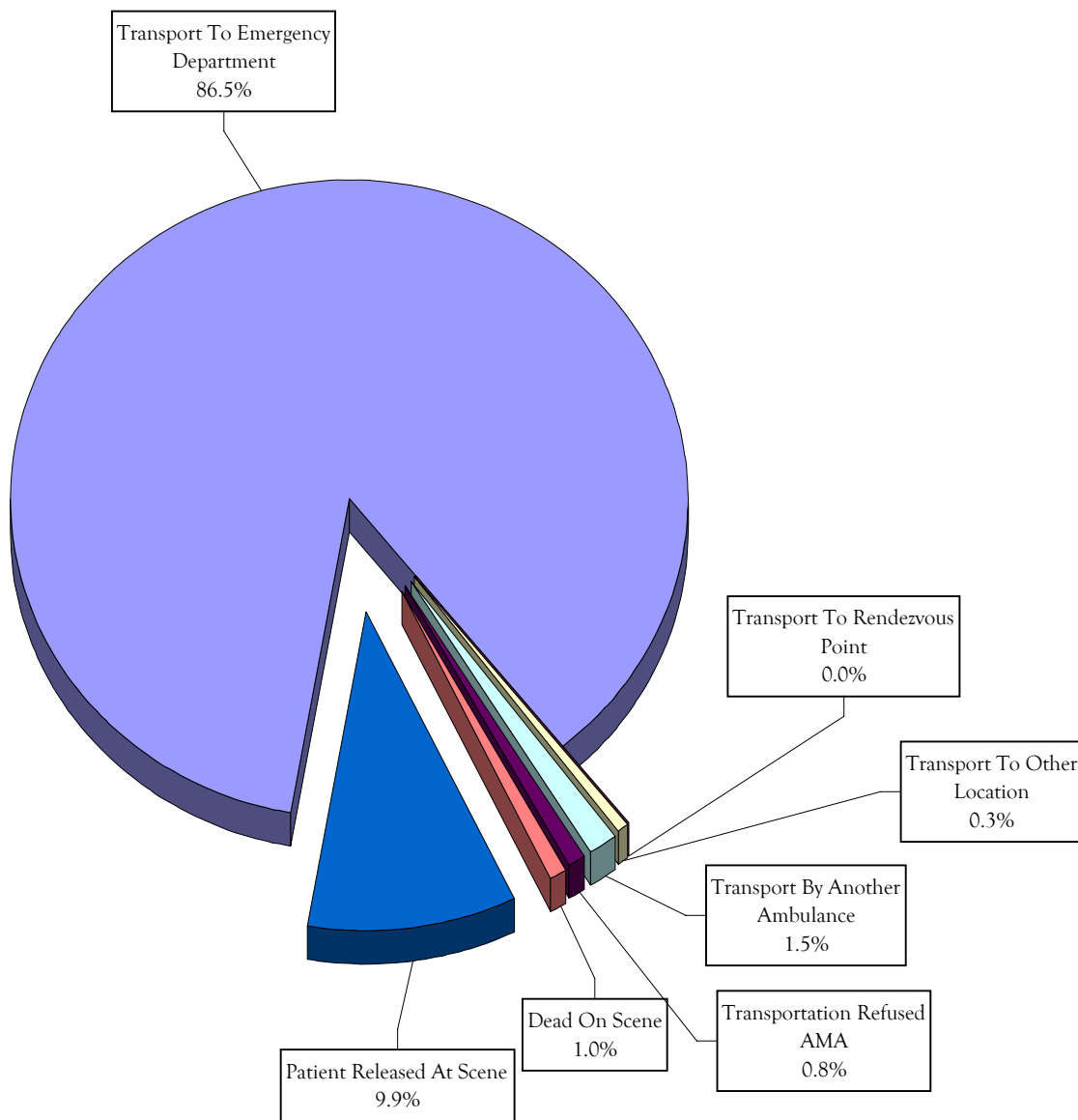
Based on data submitted by
Sacramento County Advanced Life Support Service Providers

Prepared for
The Sacramento County EMS Agency
9616 Micron Avenue, Suite 635
Sacramento, CA 95827
(916) 875-9753

By
Inspironix, Inc.
(916) 488-3222

Records included in these reports include 911 medical aid scene calls where patient contact was made. The total records entered into our database for January through December 2008 meeting these criteria were 96,881. We estimate that an additional 3.65% of the patient care records meeting these criteria did not get included in the database. Our estimated total number of patients at 911 medical aid scene calls for January through December 2008 is 100,556.

Percentage Of Calls By Call Disposition



Percentage Of Transported Patients By Receiving Hospital

Receiving Hospital	Medical (80.8% of Total)	Obstetric (1.3% of Total)	Psychiatric (2.8% of Total)	Trauma (15.1% of Total)	Total
Kaiser North	12%	10%	11%	7%	11%
Kaiser Roseville	4%	1%	3%	1%	4%
Kaiser South	10%	7%	8%	9%	9%
Mercy General	9%	16%	7%	7%	9%
Methodist	10%	7%	9%	8%	10%
Mercy of Folsom	1%	0%	1%	0%	1%
Mercy San Juan	19%	14%	26%	14%	19%
Sutter Roseville Medical Center	3%	1%	2%	1%	2%
Sutter General	11%	1%	12%	14%	11%
Sutter Memorial	6%	24%	4%	3%	5%
UC Davis Medical Center	14%	19%	17%	35%	18%
Other	1%	0%	0%	0%	1%
Total	100%	100%	100%	100%	100%

Percentage Of Transported Patients By Receiving Hospital

	Medical	Obstetric	Psychiatric	Trauma	
Receiving Hospital	80.8%	1.3%	2.8%	15.1%	100.0%
Kaiser North	7512	97	235	881	8725
Kaiser Roseville	2591	5	74	148	2818
Kaiser South	6053	65	173	1097	7388
Mercy General	5976	160	152	826	7114
Methodist	6251	71	188	907	7417
Mercy of Folsom	725	3	18	42	788
Mercy San Juan	12284	139	555	1709	14687
Sutter Roseville Medical Ce	1720	11	43	121	1895
Sutter General	6956	13	252	1626	8847
Sutter Memorial	3488	232	93	327	4140
UC Davis Medical Center	9049	185	366	4123	13723
Other	453	0	2	3	458
Totals	63058	981	2151	11810	78000

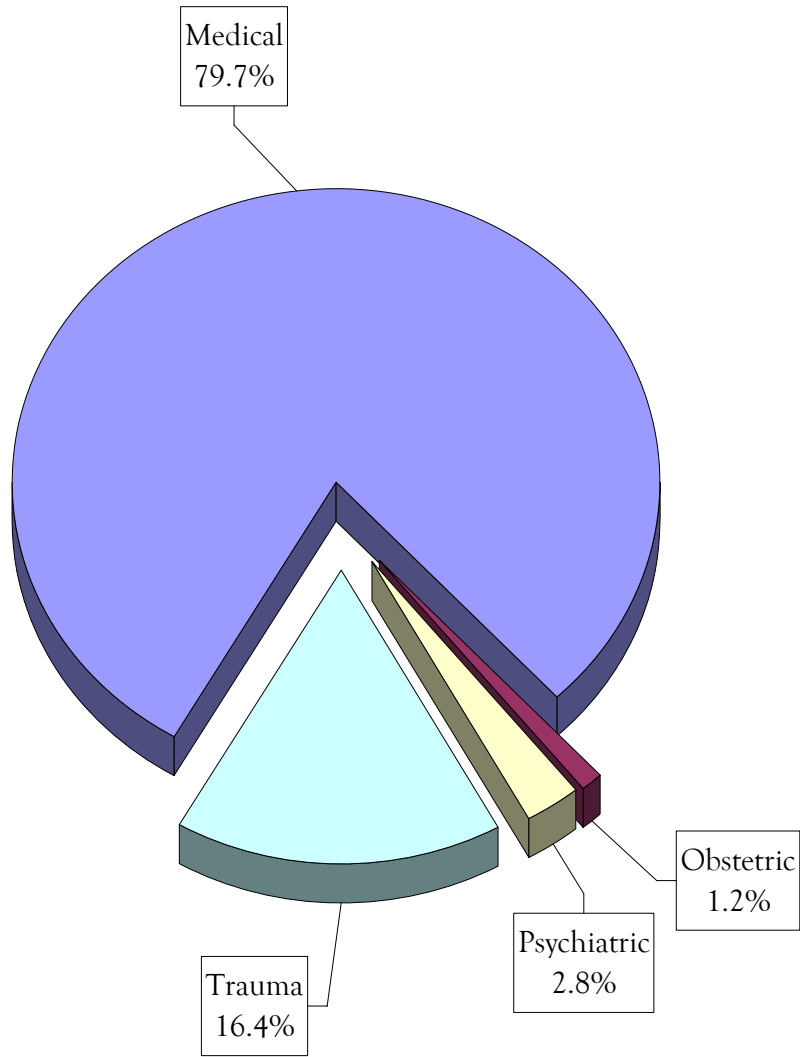
Percentage Of Patients Per Age By Patient Type

Age	Medical (79.7% of Total)	Obstetric (1.2% of Total)	Psychiatric (2.8% of Total)	Trauma (16.4% of Total)	Total
< 1 Month	0%	0%	0%	0%	0%
1-11 Months	1%	0%	0%	1%	1%
1-4 Years	2%	0%	0%	2%	2%
5-14 Years	2%	0%	3%	5%	3%
15-18 Years	3%	12%	7%	6%	4%
19-44 Years	26%	87%	49%	39%	29%
45-64 Years	30%	1%	32%	26%	29%
65-69 Years	6%	0%	3%	3%	5%
70-74 Years	6%	0%	2%	3%	5%
75-84 Years	14%	0%	3%	7%	12%
> 84 Years	10%	0%	2%	6%	9%
Total	100%	100%	100%	100%	100%

	Medical	Obstetric	Psychiatric	Trauma	Totals
Age	79.7%	1.2%	2.8%	16.4%	
< 1 Month	129			5	134
1-11 Months	615			79	694
1-4 Years	1575			326	1901
5-14 Years	1709	2	81	766	2558
15-18 Years	2001	118	177	915	3211
19-44 Years	17849	890	1199	5644	25582
45-64 Years	21276	12	773	3765	25826
65-69 Years	4010		62	462	4534
70-74 Years	4242		37	435	4714
75-84 Years	9805		69	1062	10936
> 84 Years	6700		42	914	7656
Totals	69911	1022	2440	14373	87746

Percentage Of Patients By Patient Type

Based On "Patients Per Age By Patient Type" Table



Percentage Of Patients Per Gender By Patient Type

Gender	Medical	Obstetric	Psychiatric	Trauma	Total
Male	44%	0%	43%	50%	45%
Female	56%	100%	57%	50%	55%
Total	100%	100%	100%	100%	100%

Percentage Of Patients Per Age By Gender

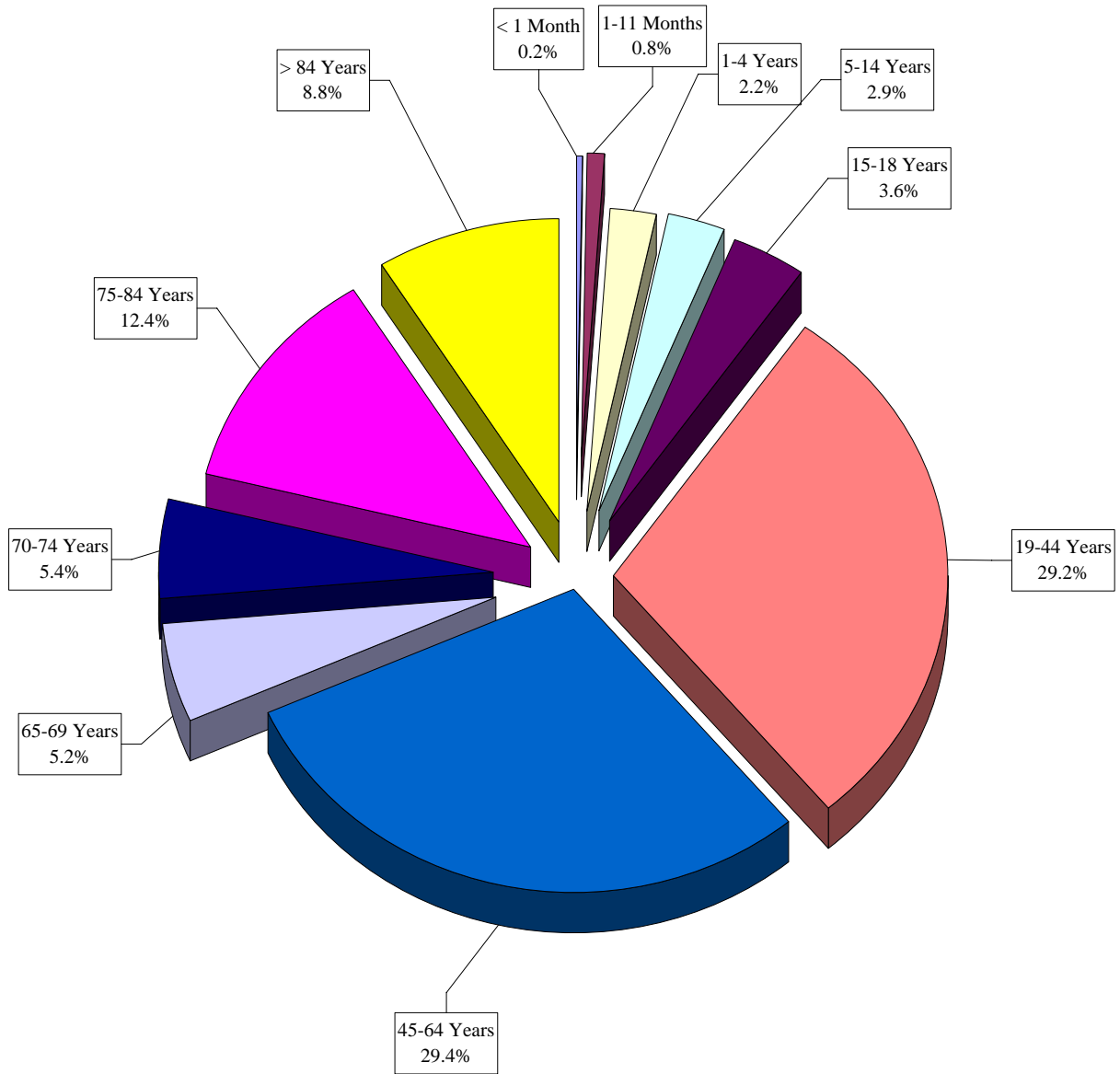
Age	Male (45.1% of Total)	Female (54.9% of Total)	Total
< 1 Month	0%	0%	0%
1-11 Months	1%	1%	1%
1-4 Years	3%	2%	2%
5-14 Years	4%	2%	3%
15-18 Years	4%	4%	4%
19-44 Years	29%	30%	29%
45-64 Years	32%	27%	29%
65-69 Years	5%	5%	5%
70-74 Years	5%	6%	5%
75-84 Years	11%	13%	12%
> 84 Years	7%	10%	9%
Total	100%	100%	100%

Gender	Medical	Obstetric	Psychiatric	Trauma	Total
Male	31063		1056	7326	39445
Female	39015	992	1386	7287	48680
Total	70078	992	2442	14613	88125

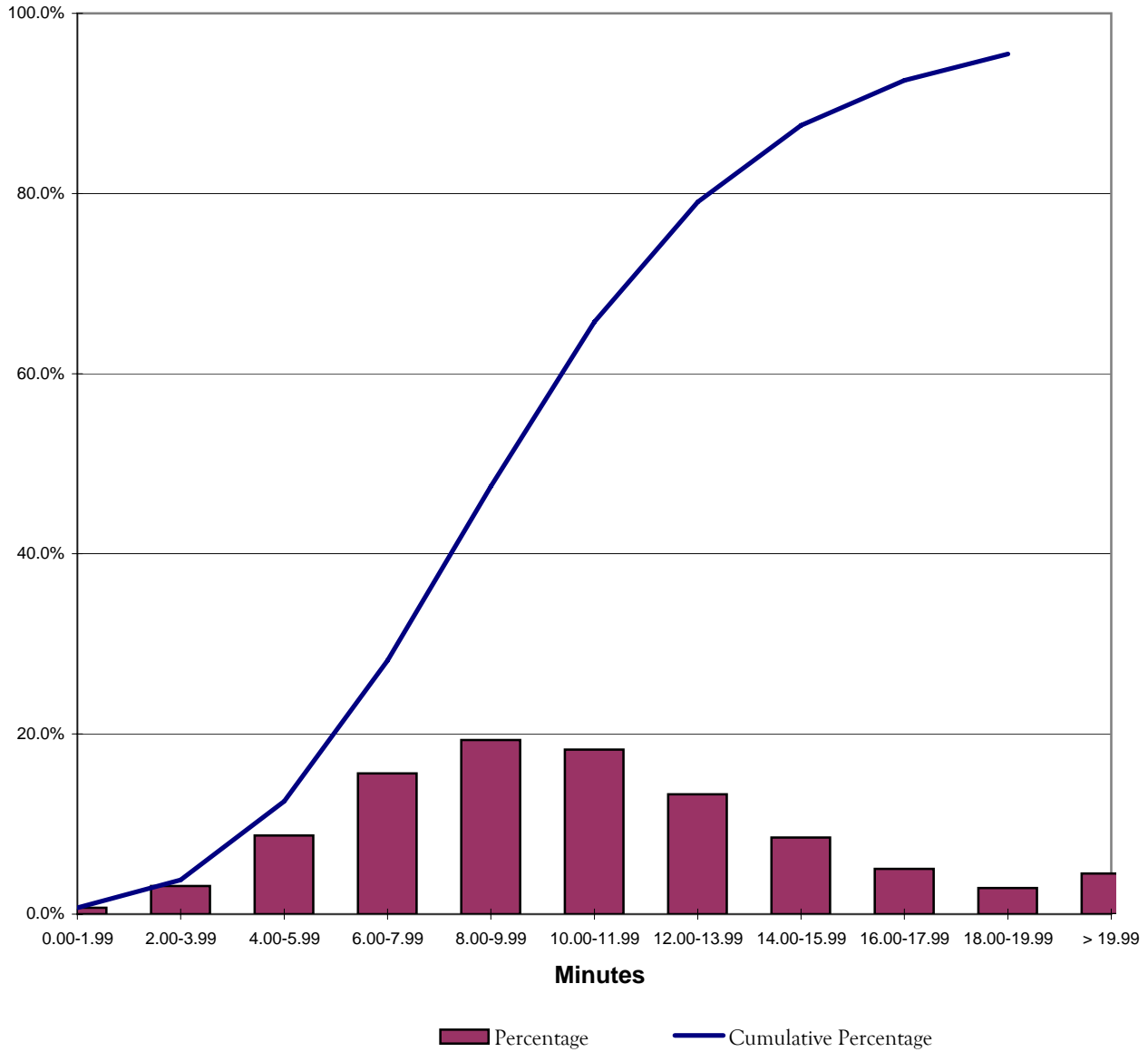
0.451104 0.548896

Age	Male	Female	Total
< 1 Month	67	88	155
1-11 Months	409	362	771
1-4 Years	1214	858	2072
5-14 Years	1490	1232	2722
15-18 Years	1558	1859	3417
19-44 Years	12129	15240	27369
45-64 Years	13469	14102	27571
65-69 Years	2299	2552	4851
70-74 Years	2091	2930	5021
75-84 Years	4686	6921	11607
> 84 Years	2888	5326	8214
Total	42300	51470	93770

Percentage Of Patients By Age



Percentage Of Calls By Scene Time Interval Transported Patients Only



	Number	% of Total	Cumulative
0.00-1.99	546	1%	1%
2.00-3.99	2424	3%	4%
4.00-5.99	6790	9%	13%
6.00-7.99	12155	16%	28%
8.00-9.99	15057	19%	47%
10.00-11.99	14221	18%	66%
12.00-13.99	10359	13%	79%
14.00-15.99	6611	8%	88%
16.00-17.99	3909	5%	93%
18.00-19.99	2265	3%	95%
> 19.99	3520	5%	100%
	77857	100%	

Sacramento County EMS Data
 January Through December 2008
 Report Adjustments Based on Estimation of Missing Records

Record counts meeting the following criteria:

Call Dates: 01/01/2008 through 12/31/2008 Number of Months in Reporting Period: 12
 Call Types: Scene
 Call Dispositions: Patient Contact Made
 System Levels: 911* **Queried as follows:
 Provider AMR, Code of Response 3, or
 Provider Not AMR, Medic Ambulance, or First Responder Ambulance,
 Code of Response 2 or 3*

Total records: 96,881
 Estimated percentage missing: 3.65468%
 Estimated total patients: 100,556
 Adjustment factor for report counts,
 based on estimates: 1.03793

Report	Reported Total	Adjusted Total	Number of Reported Records With an Unknown Row or Column Value	Percentage of Reported Records With an Unknown Row or Column Value
Calls Per Call Date Month By Ambulance Provider	96,881	100,556	0	0.00%
Calls Per Call Disposition By Code Of Response	96,881	100,556	0	0.00%
Patients Per Age By Gender	96,881	100,556	3,111	3.21%
Patients Per Age By Patient Type	96,881	100,556	9,135	9.43%
Patients Per Gender By Patient Type	96,881	100,556	8,756	9.04%
Patients Per Scene Time Interval By Patient Type				
All Transports	85,587	88,833	7,730	9.03%
Code 3 Transports Only	5,113	5,549	233	4.56%
Patients Per Receiving Hospital				
Patients Transported To ED Only	83,812	86,991	42	0.05%
Patients Per Receiving Hospital By Patient Type				
Patients Transported To ED Only	83,812	86,991	5,812	6.93%

The following providers provided complete data for January through December 2008:	Total Records Entered
American Medical Response	10,704
Cosumnes Community Services District	8,618
Sacramento City Fire Department	42,191
Sacramento Metropolitan Fire Department	35,367

The following providers provided incomplete data for January through December 2008 in time to be included in the data processing for this report:	Total Records Entered	Total Records Entered for Months Assumed to be Complete	Number of Months Assumed to be Complete	Estimated Actual Total
Folsom Fire Department	0	0	0	3,664
Wilton Fire Department	0	0	1	12

Grand Total Records Entered With Known Provider: 96,880

Calls Per Call Date Month By Ambulance Provider

from EMS Data Pro, Version 9.84

by Inspironix, Inc., for the Sacramento County EMS Agency

Report Number: 906843834 03/09/2009 12:10

Saved Query Name: 2008
 Call Dates: From 01/01/2008 Through 12/31/2008
 Call Types: {SCENE}
 Call Dispositions: {PT CONTACT MADE}
 System Levels: {911}

AMBULANCE PROVIDER

CALL DATE MONTH	American Medical Response		Cosumnes Community Services District		Sacramento City Fire Department		Sacramento Metro Fire		Wilton Fire Department		CALL DATE MONTH TOTALS	
	Number	% of Tot	Number	% of Tot	Number	% of Tot	Number	% of Tot	Number	% of Tot	Number	% of Tot
	Jan-08	958	9%	731	8%	3602	9%	2919	8%			8210
Feb-08	929	9%	728	8%	3526	8%	3107	9%			8290	9%
Mar-08	956	9%	757	9%	3577	8%	3068	9%	1	100%	8359	9%
Apr-08	964	9%	732	8%	3484	8%	3055	9%			8235	9%
May-08	947	9%	696	8%	3490	8%	3106	9%			8239	9%
Jun-08	895	8%	679	8%	3433	8%	3029	9%			8036	8%
Jul-08	888	8%	754	9%	3716	9%	2932	8%			8290	9%
Aug-08	909	8%	721	8%	3550	8%	2926	8%			8106	8%
Sep-08	886	8%	766	9%	3540	8%	3004	8%			8196	8%
Oct-08	860	8%	741	9%	3447	8%	2811	8%			7859	8%
Nov-08	817	8%	595	7%	3280	8%	2695	8%			7387	8%
Dec-08	695	6%	718	8%	3546	8%	2715	8%			7674	8%
TOTALS	10704	100%	8618	100%	42191	100%	35367	100%	1	100%	96881	100%

Number of records selected by query: 96881
 Number of records with unknown Call Date Month or unknown Ambulance Provider: 0 0%
 NOTE: Columns with totals of zero have been excluded.

Calls Per Call Disposition By Code of Response

from EMS Data Pro, Version 9.84

by Inspironix, Inc., for the Sacramento County EMS Agency

Report Number: 906843932 03/09/2009 12:12

Saved Query Name: 2008
 Call Dates: From 01/01/2008 Through 12/31/2008
 Call Types: {SCENE}
 Call Dispositions: {PT CONTACT MADE}
 System Levels: {911}

CALL DISPOSITION	CODE OF RESPONSE				CALL DISPOSITION	
	Code 2		Code 3		TOTALS	
	Number	% of Tot	Number	% of Tot	Number	% of Tot
Transport To Emergency Department	11299	89%	72513	86%	83812	87%
Transport To Other Location			319	0%	319	0%
Transport By Another Ambulance From Scene	357	3%	1099	1%	1456	2%
Transportation Refused AMA	43	0%	687	1%	730	1%
Dead On Scene	75	1%	911	1%	986	1%
Patient Released At Scene	924	7%	8654	10%	9578	10%
TOTALS	12698	100%	84183	100%	96881	100%

Number of records selected by query: 96881

Number of records with

unknown Call Disposition or unknown Code of Response: 0 0%

NOTE: Columns and rows with totals of zero have been excluded.

Patients Per Age By Gender

from EMS Data Pro, Version 9.84

by Inspironix, Inc., for the Sacramento County EMS Agency

Report Number: 906844014 03/09/2009 12:13

Saved Query Name: 2008
 Call Dates: From 01/01/2008 Through 12/31/2008
 Call Types: {SCENE}
 Call Dispositions: {PT CONTACT MADE}
 System Levels: {911}

GENDER

AGE	Male		Female		AGE TOTALS		Cumulative %
	Number	% of Tot	Number	% of Tot	Number	% of Tot	
0 months	67	0%	88	0%	155	0%	0%
1 - 11 months	409	1%	362	1%	771	1%	1%
1 - 4 years	1214	3%	858	2%	2072	2%	3%
5 - 14 years	1490	4%	1232	2%	2722	3%	6%
15 - 18 years	1558	4%	1859	4%	3417	4%	10%
19 - 44 years	12129	29%	15240	30%	27369	29%	39%
45 - 64 years	13469	32%	14102	27%	27571	29%	68%
65 - 69 years	2299	5%	2552	5%	4851	5%	74%
70 - 74 years	2091	5%	2930	6%	5021	5%	79%
75 - 84 years	4686	11%	6921	13%	11607	12%	91%
> 84 years	2888	7%	5326	10%	8214	9%	100%
TOTALS	42300	100%	51470	100%	93770	100%	100%
Minimum:	0.00 years		0.00 years		0.00 years		
Maximum:	111.00 years		111.00 years		111.00 years		
Average:	49.41 years		52.34 years		51.02 years		
Std Dev:	23.61 years		24.26 years		24.01 years		
90 %ile:	82.00 years		85.00 years		84.00 years		
95 %ile:	86.00 years		89.00 years		88.00 years		

Number of records selected by query: 96881

Number of records with

unknown Age or unknown Gender: 3111 3%

NOTE: Columns with totals of zero have been excluded.

Patients Per Age By Patient Type

from EMS Data Pro, Version 9.84

by Inspironix, Inc., for the Sacramento County EMS Agency

Report Number: 906844126 03/09/2009 12:15

Saved Query Name: 2008
 Call Dates: From 01/01/2008 Through 12/31/2008
 Call Types: {SCENE}
 Call Dispositions: {PT CONTACT MADE}
 System Levels: {911}

PATIENT TYPE

AGE	Medical		Obstetric		Psychiatric		Trauma		AGE TOTALS		
	Number	% of Tot	Number	% of Tot	Number	% of Tot	Number	% of Tot	Number	% of Tot	Cumulative %
0 months	129	0%					5	0%	134	0%	0%
1 - 11 months	615	1%					79	1%	694	1%	1%
1 - 4 years	1575	2%					326	2%	1901	2%	3%
5 - 14 years	1709	2%	2	0%	81	3%	766	5%	2558	3%	6%
15 - 18 years	2001	3%	118	12%	177	7%	915	6%	3211	4%	10%
19 - 44 years	17849	26%	890	87%	1199	49%	5644	39%	25582	29%	39%
45 - 64 years	21276	30%	12	1%	773	32%	3765	26%	25826	29%	68%
65 - 69 years	4010	6%			62	3%	462	3%	4534	5%	73%
70 - 74 years	4242	6%			37	2%	435	3%	4714	5%	79%
75 - 84 years	9805	14%			69	3%	1062	7%	10936	12%	91%
> 84 years	6700	10%			42	2%	914	6%	7656	9%	100%
TOTALS	69911	100%	1022	100%	2440	100%	14373	100%	87746	100%	100%
Minimum:	0.00 years		13.00 years		5.00 years		0.00 years		0.00 years		
Maximum:	111.00 years		62.00 years		99.00 years		105.00 years		111.00 years		
Average:	53.38 years		25.81 years		40.35 years		43.48 years		51.08 years		
Std Dev:	23.78 years		7.00 years		17.57 years		23.55 years		23.98 years		
90 %ile:	84.00 years		36.00 years		62.00 years		80.00 years		84.00 years		
95 %ile:	88.00 years		38.00 years		72.00 years		86.00 years		88.00 years		

Number of records selected by query: 96881

Number of records with

unknown Age or unknown Patient Type: 9135 9%

NOTE: Columns with totals of zero have been excluded.

Patients Per Gender By Patient Type

from EMS Data Pro, Version 9.84

by Inspironix, Inc., for the Sacramento County EMS Agency

Report Number: 906844286 03/09/2009 12:18

Saved Query Name: 2008
 Call Dates: From 01/01/2008 Through 12/31/2008
 Call Types: {SCENE}
 Call Dispositions: {PT CONTACT MADE}
 System Levels: {911}

GENDER	PATIENT TYPE								GENDER TOTALS	
	Medical		Obstetric		Psychiatric		Trauma		Number	% of Tot
	Number	% of Tot	Number	% of Tot	Number	% of Tot	Number	% of Tot	Number	% of Tot
Male	31063	44%			1056	43%	7326	50%	39445	45%
Female	39015	56%	992	100%	1386	57%	7287	50%	48680	55%
TOTALS	70078	100%	992	100%	2442	100%	14613	100%	88125	100%

Number of records selected by query: 96881

Number of records with

unknown Gender or unknown Patient Type: 8756 9%

NOTE: Columns with totals of zero have been excluded.

Patients Per Scene Time Interval By Patient Type

from EMS Data Pro, Version 9.84

by Inspironix, Inc., for the Sacramento County EMS Agency

Report Number: 906844409 03/09/2009 12:20

Saved Query Name: 2008
 Call Dates: From 01/01/2008 Through 12/31/2008
 Call Types: {SCENE}
 Call Dispositions: {PT TRANSPORTED}
 System Levels: {911}

SCENE TIME INTERVAL IN MINUTES	PATIENT TYPE								SCENE TIME INTERVAL TOTALS		
	Medical		Obstetric		Psychiatric		Trauma		Number	% of Tot	Cumulative %
	Number	% of Tot	Number	% of Tot	Number	% of Tot	Number	% of Tot	Number	% of Tot	Cumulative %
0.00 - 1.99	453	1%	7	1%	18	1%	68	1%	546	1%	1%
2.00 - 3.99	1841	3%	92	9%	109	5%	382	3%	2424	3%	4%
4.00 - 5.99	5213	8%	233	24%	252	12%	1092	9%	6790	9%	13%
6.00 - 7.99	9655	15%	273	28%	403	19%	1824	15%	12155	16%	28%
8.00 - 9.99	12204	19%	189	19%	412	19%	2252	19%	15057	19%	47%
10.00 - 11.99	11735	19%	90	9%	332	15%	2064	17%	14221	18%	66%
12.00 - 13.99	8611	14%	34	3%	217	10%	1497	13%	10359	13%	79%
14.00 - 15.99	5472	9%	30	3%	144	7%	965	8%	6611	8%	88%
16.00 - 17.99	3218	5%	14	1%	101	5%	576	5%	3909	5%	93%
18.00 - 19.99	1815	3%	9	1%	73	3%	368	3%	2265	3%	95%
> 19.99	2664	4%	11	1%	94	4%	751	6%	3520	5%	100%
TOTALS	62881	100%	982	100%	2155	100%	11839	100%	77857	100%	100%
Minimum:	0.00 minutes		0.00 minutes		0.00 minutes		0.00 minutes		0.00 minutes		
Maximum:	94.00 minutes		31.00 minutes		80.00 minutes		186.00 minutes		186.00 minutes		
Average:	10.46 minutes		7.26 minutes		9.93 minutes		10.69 minutes		10.44 minutes		
Std Dev:	5.05 minutes		3.70 minutes		5.98 minutes		5.79 minutes		5.20 minutes		
90 %ile:	16.00 minutes		11.00 minutes		17.00 minutes		17.00 minutes		16.00 minutes		
95 %ile:	19.00 minutes		14.00 minutes		19.00 minutes		21.00 minutes		19.00 minutes		

Number of records selected by query: 85587
 Number of records with
 unknown Scene Time Interval or unknown Patient Type: 7730 9%
 NOTE: Columns with totals of zero have been excluded.

NOTE: Scene Time Interval is defined as
 Time Arrived Scene to Time Left Scene

Patients Per Scene Time Interval By Patient Type

from EMS Data Pro, Version 9.84

by Inspironix, Inc., for the Sacramento County EMS Agency

Report Number: 906844575 03/09/2009 12:22

Saved Query Name: 2008
 Call Dates: From 01/01/2008 Through 12/31/2008
 Call Types: {SCENE}
 Call Dispositions: {PT TRANSPORTED}
 Codes of Transport: 3
 System Levels: {911}

SCENE TIME INTERVAL IN MINUTES	PATIENT TYPE								SCENE TIME INTERVAL TOTALS		
	Medical		Obstetric		Psychiatric		Trauma		Number	% of Tot	mlative %
	Number	% of Tot	Number	% of Tot	Number	% of Tot	Number	% of Tot			
0.00 - 1.99	24	1%			1	1%	5	1%	30	1%	1%
2.00 - 3.99	61	2%	5	8%	2	2%	24	3%	92	2%	3%
4.00 - 5.99	175	4%	14	22%	9	8%	60	8%	258	5%	8%
6.00 - 7.99	408	10%	22	34%	14	13%	132	19%	576	12%	20%
8.00 - 9.99	653	16%	12	19%	20	19%	124	17%	809	17%	36%
10.00 - 11.99	753	19%	3	5%	17	16%	140	20%	913	19%	55%
12.00 - 13.99	702	18%	5	8%	13	12%	84	12%	804	16%	71%
14.00 - 15.99	486	12%	2	3%	18	17%	53	7%	559	11%	83%
16.00 - 17.99	290	7%	1	2%	8	7%	21	3%	320	7%	89%
18.00 - 19.99	178	4%			3	3%	25	4%	206	4%	94%
> 19.99	266	7%			3	3%	44	6%	313	6%	100%
TOTALS	3996	100%	64	100%	108	100%	712	100%	4880	100%	100%
Minimum:	0.00 minutes		2.00 minutes		1.00 minutes		0.00 minutes		0.00 minutes		
Maximum:	73.00 minutes		16.00 minutes		21.00 minutes		61.00 minutes		73.00 minutes		
Average:	11.84 minutes		7.22 minutes		10.67 minutes		10.44 minutes		11.55 minutes		
Std Dev:	5.15 minutes		3.08 minutes		4.18 minutes		5.49 minutes		5.21 minutes		
90 %ile:	18.00 minutes		12.00 minutes		16.00 minutes		17.00 minutes		18.00 minutes		
95 %ile:	21.00 minutes		13.00 minutes		18.00 minutes		21.00 minutes		20.00 minutes		

Number of records selected by query: 5113
 Number of records with
 unknown Scene Time Interval or unknown Patient Type: 233 5%
 NOTE: Columns with totals of zero have been excluded.

NOTE: Scene Time Interval is defined as
 Time Arrived Scene to Time Left Scene

Patients Per Receiving Hospital

from EMS Data Pro, Version 9.84

by Inspironix, Inc., for the Sacramento County EMS Agency

Report Number: 906844777 03/09/2009 12:26

Saved Query Name: 2008
Call Dates: From 01/01/2008 Through 12/31/2008
Call Types: {SCENE}
Call Dispositions: {PT TRANSPORTED TO ED}
System Levels: {911}

RECEIVING HOSPITAL	RECEIVING HOSPITAL TOTALS	
	Number	% of Tot
Dameron Community Hospital	6	0%
Kaiser North Hospital	9311	11%
Kaiser Roseville Hospital	2908	3%
Kaiser South Hospital	7880	9%
Lodi Memorial Hospital	399	0%
Mercy General Hospital	7724	9%
Methodist Hospital	7886	9%
Mercy Of Folsom Hospital	800	1%
Mercy San Juan Medical Center	15384	18%
Other	59	0%
Sutter Roseville Medical Center	1950	2%
Sutter General Hospital	9901	12%
San Joaquin General Hospital	35	0%
Saint Joseph's Hospital	14	0%
Sutter Memorial Hospital	4399	5%
UC Davis Medical Center	15114	18%
TOTALS	83770	100%

Number of records selected by query: 83812

Number of records with

unknown Receiving Hospital: 42 0%

NOTE: Rows with totals of zero have been excluded.

Patients Per Receiving Hospital By Patient Type

from EMS Data Pro, Version 9.84

by Inspironix, Inc., for the Sacramento County EMS Agency

Report Number: 906844857 03/09/2009 12:27

Saved Query Name: 2008
 Call Dates: From 01/01/2008 Through 12/31/2008
 Call Types: {SCENE}
 Call Dispositions: {PT TRANSPORTED TO ED}
 System Levels: {911}

RECEIVING HOSPITAL	PATIENT TYPE								RECEIVING HOSPITAL TOTALS	
	Medical		Obstetric		Psychiatric		Trauma		Number	% of Tot
	Number	% of Tot	Number	% of Tot	Number	% of Tot	Number	% of Tot		
Dameron Community Hospital	4	0%							4	0%
Kaiser North Hospital	7512	12%	97	10%	235	11%	881	7%	8725	11%
Kaiser Roseville Hospital	2591	4%	5	1%	74	3%	148	1%	2818	4%
Kaiser South Hospital	6053	10%	65	7%	173	8%	1097	9%	7388	9%
Lodi Memorial Hospital	371	1%							371	0%
Mercy General Hospital	5976	9%	160	16%	152	7%	826	7%	7114	9%
Methodist Hospital	6251	10%	71	7%	188	9%	907	8%	7417	10%
Mercy Of Folsom Hospital	725	1%	3	0%	18	1%	42	0%	788	1%
Mercy San Juan Medical Center	12284	19%	139	14%	555	26%	1709	14%	14687	19%
Other	31	0%			1	0%	3	0%	35	0%
Sutter Roseville Medical Center	1720	3%	11	1%	43	2%	121	1%	1895	2%
Sutter General Hospital	6956	11%	13	1%	252	12%	1626	14%	8847	11%
San Joaquin General Hospital	33	0%			1	0%			34	0%
Saint Joseph's Hospital	14	0%							14	0%
Sutter Memorial Hospital	3488	6%	232	24%	93	4%	327	3%	4140	5%
UC Davis Medical Center	9049	14%	185	19%	366	17%	4123	35%	13723	18%
TOTALS	63058	100%	981	100%	2151	100%	11810	100%	78000	100%

Number of records selected by query: 83812

Number of records with

unknown Receiving Hospital or unknown Patient Type: 5812 7%

NOTE: Columns and rows with totals of zero have been excluded.