

Sacramento County
Report For January Through December 2007
9-1-1 Paramedic Ambulance Services

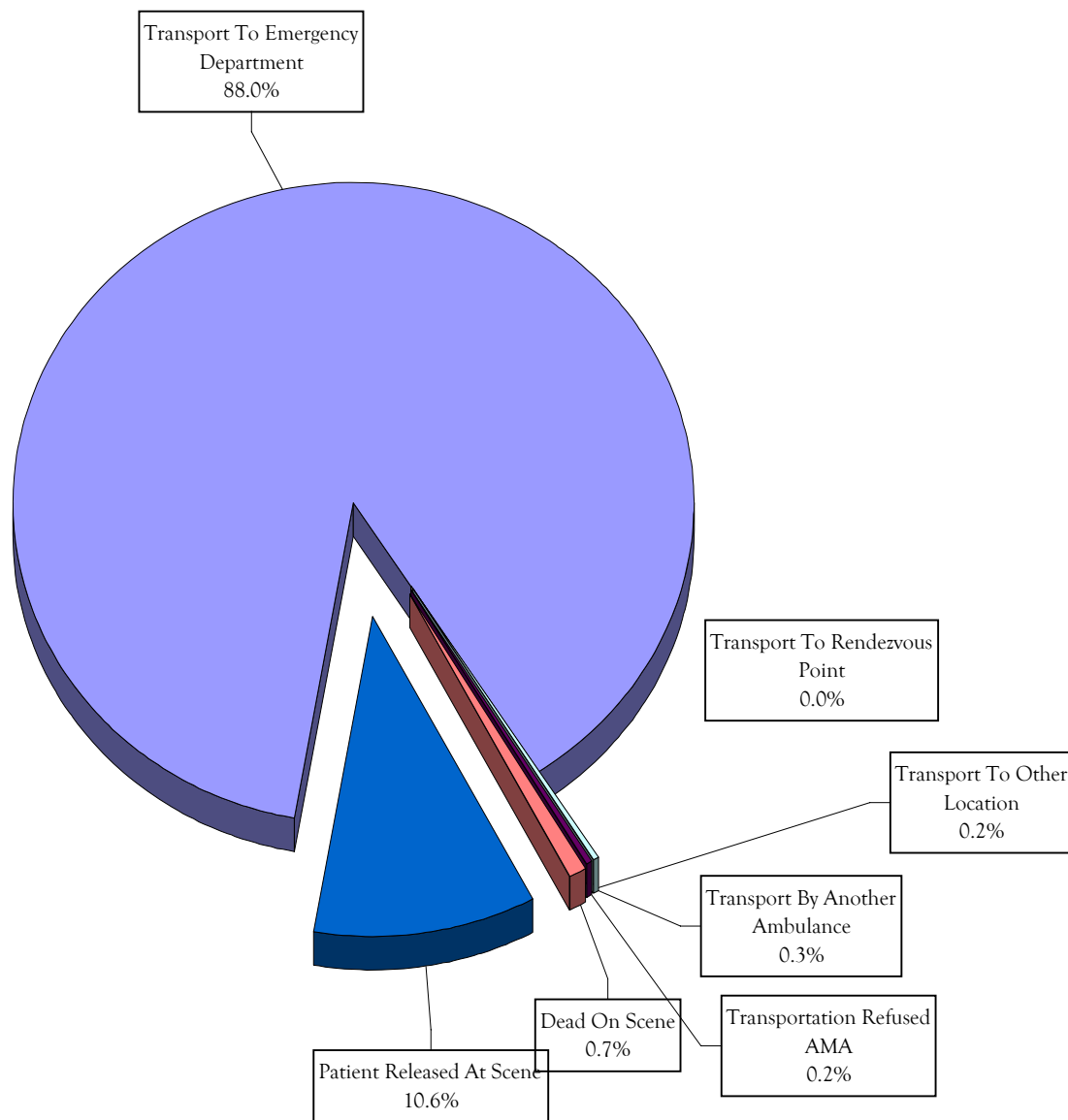
Based on data submitted by
Sacramento County Advanced Life Support Service Providers

Prepared for
The Sacramento County EMS Agency
9616 Micron Avenue, Suite 635
Sacramento, CA 95827
(916) 875-9753

By
Inspironix, Inc.
(916) 488-3222

Records included in these reports include 911 medical aid scene calls where patient contact was made. The total records entered into our database for January through December 2007 meeting these criteria were 90,744. We estimate that an additional 3.65% of the patient care records meeting these criteria did not get included in the database. Our estimated total number of patients at 911 medical aid scene calls for January through December 2007 is 94,184.

Percentage Of Calls By Call Disposition



Call Disposition	
Transport To Emergency Department	79820
Transport To Rendezvous Point	0
Transport To Other Location	172
Transport By Another Ambulance	272
Transportation Refused AMA	199
Dead On Scene	621
Patient Released At Scene	9660
	90744

Percentage Of Transported Patients By Receiving Hospital

Receiving Hospital	Medical (91.1% of Total)	Obstetric (1.3% of Total)	Psychiatric (2.3% of Total)	Trauma (5.4% of Total)	Total
Kaiser North	11%	9%	11%	9%	11%
Kaiser Roseville	4%	1%	5%	3%	4%
Kaiser South	8%	6%	7%	4%	8%
Mercy General	9%	13%	2%	6%	9%
Methodist	9%	7%	11%	4%	9%
Mercy of Folsom	1%	0%	2%	1%	1%
Mercy San Juan	20%	21%	33%	30%	21%
Sutter Roseville Medical Center	3%	2%	3%	3%	3%
Sutter General	11%	1%	6%	8%	11%
Sutter Memorial	5%	21%	4%	3%	5%
UC Davis Medical Center	16%	17%	13%	28%	16%
Other	1%	1%	0%	0%	1%
Total	100%	100%	100%	100%	100%

Percentage Of Transported Patients By Receiving Hospital

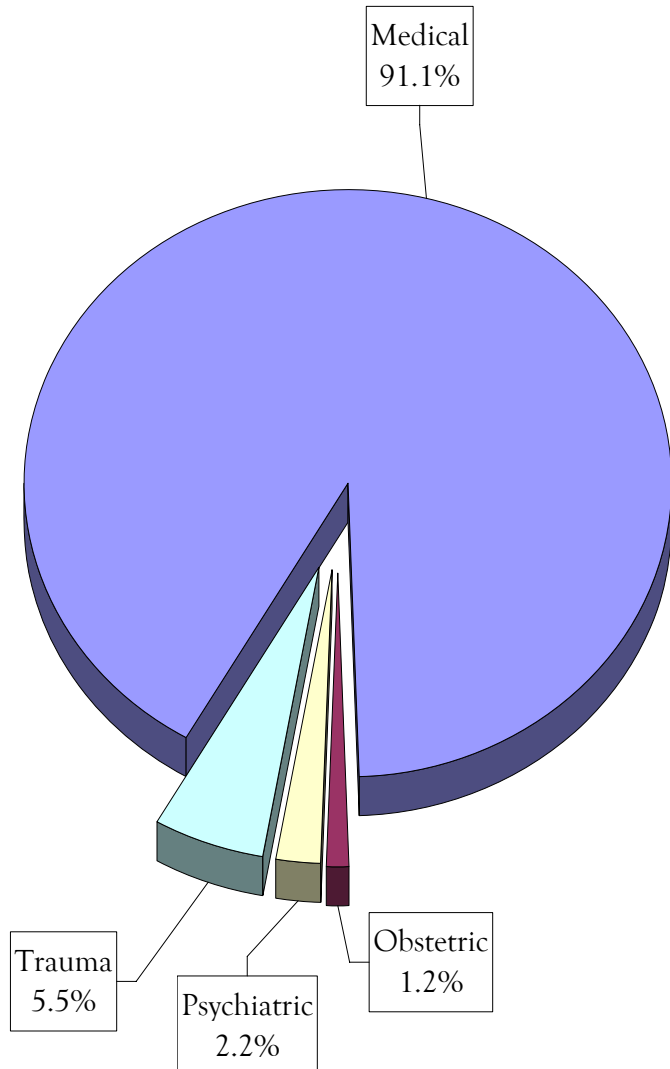
	Medical	Obstetric	Psychiatric	Trauma	
Receiving Hospital	91.1%	1.3%	2.3%	5.4%	100.0%
Kaiser North	6775	81	168	330	7354
Kaiser Roseville	2692	6	82	94	2874
Kaiser South	5043	55	108	146	5352
Mercy General	5517	116	37	212	5882
Methodist	5678	59	172	157	6066
Mercy of Folsom	794	4	29	23	850
Mercy San Juan	12147	181	502	1065	13895
Sutter Roseville Medical Ce	1732	13	49	98	1892
Sutter General	6707	11	87	291	7096
Sutter Memorial	3010	183	64	98	3355
UC Davis Medical Center	9376	151	196	1004	10727
Other	478	5	7	7	497
Totals	59949	865	1501	3525	65840

Percentage Of Patients Per Age By Patient Type

Age	Medical (91.1% of Total)	Obstetric (1.2% of Total)	Psychiatric (2.2% of Total)	Trauma (5.5% of Total)	Total
< 1 Month	0%	0%	0%	0%	0%
1-11 Months	1%	0%	0%	1%	1%
1-4 Years	2%	0%	0%	2%	2%
5-14 Years	3%	1%	3%	6%	3%
15-18 Years	3%	12%	8%	6%	4%
19-44 Years	27%	86%	49%	37%	29%
45-64 Years	29%	1%	31%	24%	29%
65-69 Years	6%	0%	2%	3%	5%
70-74 Years	6%	0%	2%	3%	5%
75-84 Years	14%	0%	3%	9%	13%
> 84 Years	9%	0%	2%	8%	9%
Total	100%	100%	100%	100%	100%

	Medical	Obstetric	Psychiatric	Trauma	Totals
Age	91.1%	1.2%	2.2%	5.5%	
< 1 Month	131			2	133
1-11 Months	590			24	614
1-4 Years	1460			89	1549
5-14 Years	1670	7	53	221	1951
15-18 Years	2213	107	122	241	2683
19-44 Years	18111	770	786	1498	21165
45-64 Years	19392	9	488	975	20864
65-69 Years	3732		37	128	3897
70-74 Years	3773		26	134	3933
75-84 Years	9144		47	378	9569
> 84 Years	5890		32	317	6239
Totals	66106	893	1591	4007	72597

Percentage Of Patients By Patient Type
Based On "Patients Per Age By Patient Type" Table



Percentage Of Patients Per Gender By Patient Type

Gender	Medical	Obstetric	Psychiatric	Trauma	Total
Male	45%	0%	39%	54%	45%
Female	55%	100%	61%	46%	55%
Total	100%	100%	100%	100%	100%

Percentage Of Patients Per Age By Gender

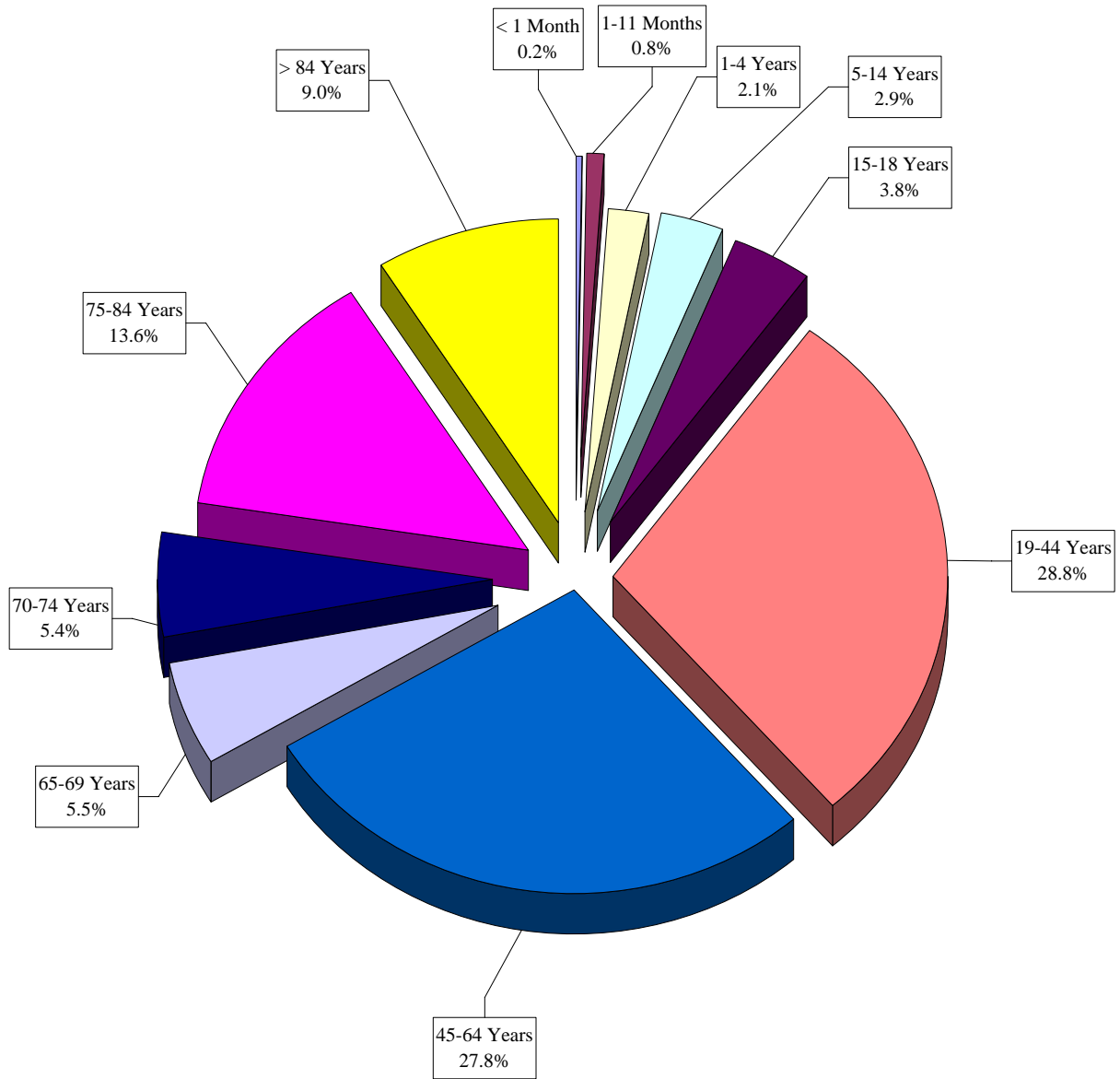
Age	Male (45.3% of Total)	Female (54.7% of Total)	Total
< 1 Month	0%	0%	0%
1-11 Months	1%	1%	1%
1-4 Years	3%	2%	2%
5-14 Years	4%	2%	3%
15-18 Years	4%	4%	4%
19-44 Years	28%	29%	29%
45-64 Years	31%	26%	28%
65-69 Years	5%	6%	5%
70-74 Years	5%	6%	5%
75-84 Years	12%	15%	14%
> 84 Years	7%	11%	9%
Total	100%	100%	100%

Gender	Medical	Obstetric	Psychiatric Trauma	Total	
Male	19722		539	2159	22420
Female	23969	587	828	1871	27255
Total	43691	587	1367	4030	49675

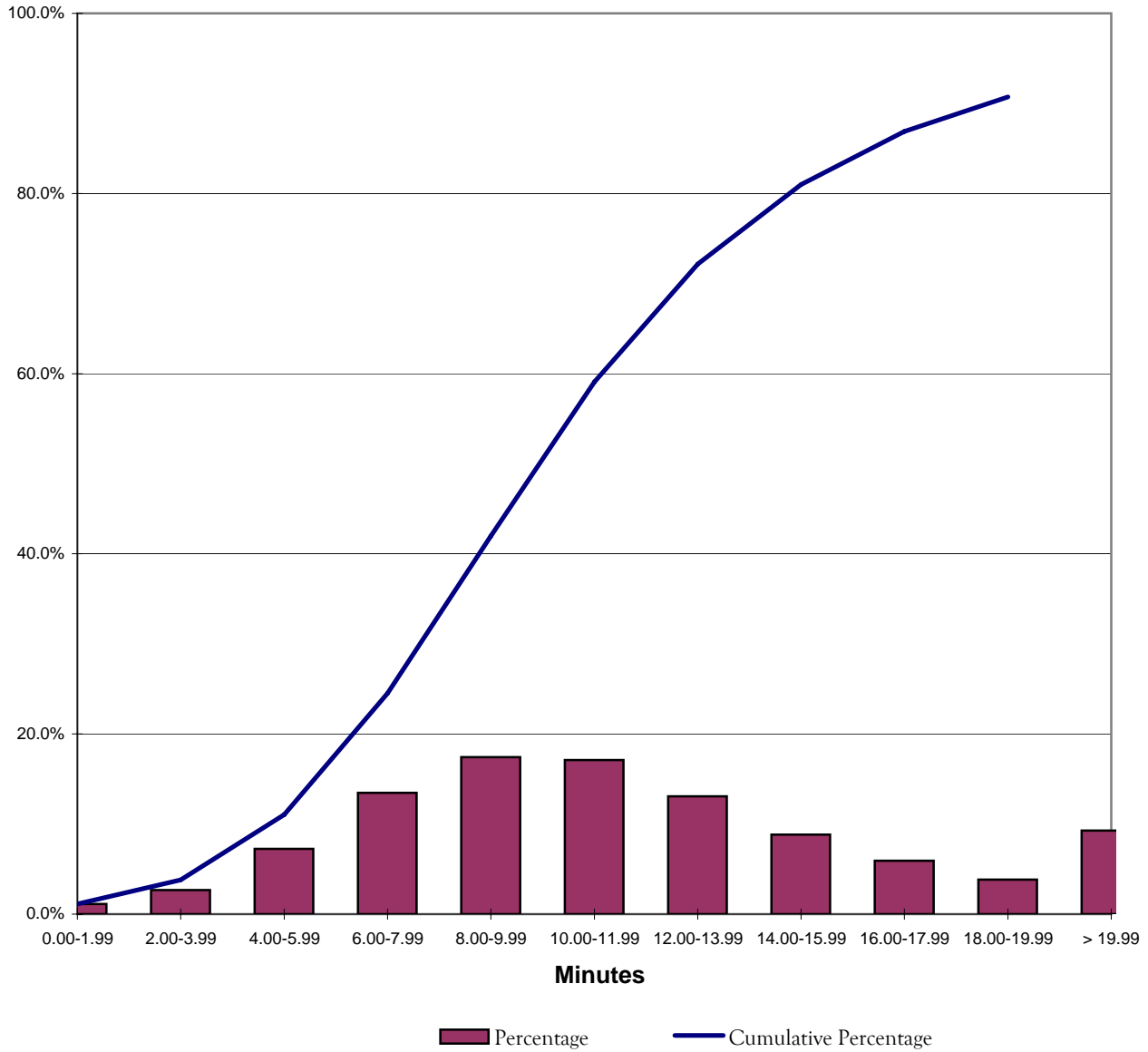
0.452536 0.547464

Age	Male	Female	Total
< 1 Month	41	57	98
1-11 Months	274	224	498
1-4 Years	758	496	1254
5-14 Years	974	728	1702
15-18 Years	1038	1201	2239
19-44 Years	7527	9347	16874
45-64 Years	8099	8224	16323
65-69 Years	1400	1817	3217
70-74 Years	1369	1793	3162
75-84 Years	3190	4794	7984
> 84 Years	1864	3419	5283
Total	26534	32100	58634

Percentage Of Patients By Age



Percentage Of Calls By Scene Time Interval Transported Patients Only



	Number	% of Total	Cumulative
0.00-1.99	669	1%	1%
2.00-3.99	1576	3%	4%
4.00-5.99	4265	7%	11%
6.00-7.99	7930	13%	25%
8.00-9.99	10264	17%	42%
10.00-11.99	10068	17%	59%
12.00-13.99	7699	13%	72%
14.00-15.99	5201	9%	81%
16.00-17.99	3484	6%	87%
18.00-19.99	2256	4%	91%
> 19.99	5453	9%	100%
	58865	100%	

Sacramento County EMS Data
 January Through December 2007
 Report Adjustments Based on Estimation of Missing Records

Record counts meeting the following criteria:
 Call Dates: 01/01/2007 through 12/31/2007 Number of Months in Reporting Period: 12
 Call Types: Scene
 Call Dispositions: Patient Contact Made
 System Levels: 911* *Queried as follows:
 Provider AMR, Code of Response 3, or
 Provider Not AMR, Medic Ambulance, or First Responder Ambulance,
 Code of Response 2 or 3

Total records: 90,744
 Estimated percentage missing: 3.65253%
 Estimated total patients: 94,184
 Adjustment factor for report counts,
 based on estimates: 1.03791

Report	Reported Total	Adjusted Total	Number of Reported Records With an Unknown Row or Column Value	Percentage of Reported Records With an Unknown Row or Column Value
Calls Per Call Date Month By Ambulance Provider	90,744	94,184	0	0.00%
Calls Per Call Disposition By Code Of Response	90,744	94,184	0	0.00%
Patients Per Age By Gender	90,744	94,184	1,169	1.29%
Patients Per Age By Patient Type	90,744	94,184	23,200	25.57%
Patients Per Gender By Patient Type	90,744	94,184	22,592	24.90%
Patients Per Scene Time Interval By Patient Type				
All Transports	80,264	83,307	15,545	19.37%
Code 3 Transports Only	4,199	6,642	2,200	52.39%
Patients Per Receiving Hospital				
Patients Transported To ED Only	79,820	82,846	33	0.04%
Patients Per Receiving Hospital By Patient Type				
Patients Transported To ED Only	79,820	82,846	13,980	17.51%

Method1	SFD	CCSD	Method2	AMR + SMF	SFD	CCSD
District			District			
% Transports Code 3	0.040082	0.052505	% Transports Code 3	0.056089817	0.05609	0.05609
Jan-April '07 code 3 transports	531	109				
May-Dec '07 code 3 tranports	1056.509	280.4807	May-Dec '07 code 3 tranports		1478	300

Code of Transport is missing for SFD and CCSD from the 5/1/2007 to 12/31/2007.
 To compensate, an average of the first 4 months of available data is used to find the % of all calls that are code 3 transport
 Secondly, an average is computed monthly from AMR and SMF to find the % of responses that are code 3 transport

The following providers provided complete data for January through December 2006:	Total Records Entered
American Medical Response	10,118
Cosumnes Community Services District	7,385
Sacramento City Fire Department	39,583
Sacramento Metropolitan Fire Department	33,654

The following providers provided incomplete data for January through December 2006 in time to be included in the data processing for this report:	Total Records Entered	Assumed to be Complete	Number of Months Assumed to be Complete	Estimated Actual Total
Folsom Fire Department	0	0	0	3,432
Wilton Fire Department	0	0	3	12

Grand Total Records Entered With Known Provider: 90,740

Calls Per Call Date Month By Ambulance Provider

from EMS Data Pro, Version 9.84

by Inspironix, Inc., for the Sacramento County EMS Agency

Report Number: 809149600 03/31/2008 13:46

Saved Query Name: 2007
 Call Dates: From 01/01/2007 Through 12/31/2007
 Call Types: {SCENE}
 Call Dispositions: {PT CONTACT MADE}
 System Levels: {911}

CALL DATE MONTH	AMBULANCE PROVIDER											
	American Medical Response		Cosumnes Community Services District		Sacramento City Fire Department		Sacramento Metro Fire		Wilton Fire Department		CALL DATE MONTH TOTALS	
	Number	% of Tot	Number	% of Tot	Number	% of Tot	Number	% of Tot	Number	% of Tot	Number	% of Tot
Jan-07	797	8%	531	7%	3337	8%	2911	9%			7576	8%
Feb-07	789	8%	474	6%	3243	8%	2764	8%			7270	8%
Mar-07	811	8%	550	7%	3511	9%	2938	9%	2	50%	7812	9%
Apr-07	683	7%	493	7%	3135	8%	2682	8%			6993	8%
May-07	778	8%	676	9%	3422	9%	2833	8%			7709	8%
Jun-07	785	8%	676	9%	3347	8%	2812	8%	1	25%	7621	8%
Jul-07	819	8%	695	9%	3412	9%	2842	8%			7768	9%
Aug-07	968	10%	693	9%	3278	8%	2821	8%			7760	9%
Sep-07	927	9%	601	8%	3219	8%	2651	8%			7398	8%
Oct-07	954	9%	685	9%	3310	8%	2721	8%			7670	8%
Nov-07	902	9%	616	8%	3072	8%	2769	8%	1	25%	7360	8%
Dec-07	905	9%	695	9%	3297	8%	2910	9%			7807	9%
TOTALS	10118	100%	7385	100%	39583	100%	33654	100%	4	100%	90744	100%

Number of records selected by query: 90744
 Number of records with unknown Call Date Month or unknown Ambulance Provider: 0 0%
 NOTE: Columns with totals of zero have been excluded.

Calls Per Call Disposition By Code of Response

from EMS Data Pro, Version 9.84

by Inspironix, Inc., for the Sacramento County EMS Agency

Report Number: 809152329 03/31/2008 14:32

Saved Query Name: 2007
 Call Dates: From 01/01/2007 Through 12/31/2007
 Call Types: {SCENE}
 Call Dispositions: {PT CONTACT MADE}
 System Levels: {911}

CALL DISPOSITION	CODE OF RESPONSE				CALL DISPOSITION	
	Code 2		Code 3		TOTALS	
	Number	% of Tot	Number	% of Tot	Number	% of Tot
Transport To Emergency Department	9272	99%	70548	87%	79820	88%
Transport To Other Location			172	0%	172	0%
Transport By Another Ambulance From Scene			272	0%	272	0%
Transportation Refused AMA			199	0%	199	0%
Dead On Scene	1	0%	620	1%	621	1%
Patient Released At Scene	55	1%	9605	12%	9660	11%
TOTALS	9328	100%	81416	100%	90744	100%

Number of records selected by query: 90744

Number of records with

unknown Call Disposition or unknown Code of Response: 0 0%

NOTE: Columns and rows with totals of zero have been excluded.

Patients Per Age By Gender

from EMS Data Pro, Version 9.84

by Inspironix, Inc., for the Sacramento County EMS Agency

Report Number: 809155121 03/31/2008 15:18

Saved Query Name: 2007
 Call Dates: From 01/01/2007 Through 12/31/2007
 Call Types: {SCENE}
 Call Dispositions: {PT CONTACT MADE}
 System Levels: {911}

GENDER

AGE	Male		Female		AGE TOTALS		Cumulative %
	Number	% of Tot	Number	% of Tot	Number	% of Tot	
0 months	41	0%	57	0%	98	0%	0%
1 - 11 months	274	1%	224	1%	498	1%	1%
1 - 4 years	758	3%	496	2%	1254	2%	3%
5 - 14 years	974	4%	728	2%	1702	3%	6%
15 - 18 years	1038	4%	1201	4%	2239	4%	10%
19 - 44 years	7527	28%	9347	29%	16874	29%	39%
45 - 64 years	8099	31%	8224	26%	16323	28%	66%
65 - 69 years	1400	5%	1817	6%	3217	5%	72%
70 - 74 years	1369	5%	1793	6%	3162	5%	77%
75 - 84 years	3190	12%	4794	15%	7984	14%	91%
> 84 years	1864	7%	3419	11%	5283	9%	100%
TOTALS	26534	100%	32100	100%	58634	100%	100%
Minimum:	0.00 years		0.00 years		0.00 years		
Maximum:	111.00 years		103.00 years		111.00 years		
Average:	49.65 years		53.09 years		51.53 years		
Std Dev:	23.97 years		24.49 years		24.32 years		
90 %ile:	82.00 years		85.00 years		84.00 years		
95 %ile:	86.00 years		89.00 years		88.00 years		

Number of records selected by query: 90744

Number of records with

unknown Age or unknown Gender: 32110 35%

NOTE: Columns with totals of zero have been excluded.

Patients Per Age By Patient Type

from EMS Data Pro, Version 9.84

by Inspironix, Inc., for the Sacramento County EMS Agency

Report Number: 809154445 03/31/2008 15:07

Saved Query Name: 2007
 Call Dates: From 01/01/2007 Through 12/31/2007
 Call Types: {SCENE}
 Call Dispositions: {PT CONTACT MADE}
 System Levels: {911}

PATIENT TYPE

AGE	Medical		Obstetric		Psychiatric		Trauma		AGE TOTALS		Cumulative %
	Number	% of Tot	Number	% of Tot	Number	% of Tot	Number	% of Tot	Number	% of Tot	
0 months	131	0%					2	0%	133	0%	0%
1 - 11 months	590	1%					24	1%	614	1%	1%
1 - 4 years	1460	2%					89	2%	1549	2%	3%
5 - 14 years	1670	3%	7	1%	53	3%	221	6%	1951	3%	6%
15 - 18 years	2213	3%	107	12%	122	8%	241	6%	2683	4%	10%
19 - 44 years	18111	27%	770	86%	786	49%	1498	37%	21165	29%	39%
45 - 64 years	19392	29%	9	1%	488	31%	975	24%	20864	29%	67%
65 - 69 years	3732	6%			37	2%	128	3%	3897	5%	73%
70 - 74 years	3773	6%			26	2%	134	3%	3933	5%	78%
75 - 84 years	9144	14%			47	3%	378	9%	9569	13%	91%
> 84 years	5890	9%			32	2%	317	8%	6239	9%	100%
TOTALS	66106	100%	893	100%	1591	100%	4007	100%	72597	100%	100%
Minimum:	0.00 years		13.00 years		7.00 years		0.00 years		0.00 years		
Maximum:	111.00 years		55.00 years		101.00 years		104.00 years		111.00 years		
Average:	52.33 years		25.49 years		40.40 years		44.97 years		51.33 years		
Std Dev:	23.95 years		6.83 years		17.93 years		24.76 years		24.04 years		
90 %ile:	84.00 years		35.00 years		63.00 years		83.00 years		83.00 years		
95 %ile:	88.00 years		38.00 years		74.00 years		87.00 years		88.00 years		

Number of records selected by query: 90744

Number of records with

unknown Age or unknown Patient Type: 18147 20%

NOTE: Columns with totals of zero have been excluded.

Patients Per Gender By Patient Type

from EMS Data Pro, Version 9.84

by Inspironix, Inc., for the Sacramento County EMS Agency

Report Number: 809334920 04/02/2008 09:42

Saved Query Name: 2007
 Call Dates: From 01/01/2007 Through 12/31/2007
 Call Types: {SCENE}
 Call Dispositions: {PT CONTACT MADE}
 System Levels: {911}

GENDER	PATIENT TYPE								GENDER TOTALS	
	Medical		Obstetric		Psychiatric		Trauma		Number	% of Tot
	Number	% of Tot	Number	% of Tot	Number	% of Tot	Number	% of Tot		
Male	19722	45%			539	39%	2159	54%	22420	45%
Female	23969	55%	587	100%	828	61%	1871	46%	27255	55%
TOTALS	43691	100%	587	100%	1367	100%	4030	100%	49675	100%

Number of records selected by query: 90744

Number of records with

unknown Gender or unknown Patient Type: 41069 45%

NOTE: Columns with totals of zero have been excluded.

Patients Per Scene Time Interval By Patient Type

from EMS Data Pro, Version 9.84

by Inspironix, Inc., for the Sacramento County EMS Agency

Report Number: 809254226 04/01/2008 15:03

Saved Query Name: 2007
 Call Dates: From 01/01/2007 Through 12/31/2007
 Call Types: {SCENE}
 Call Dispositions: {PT TRANSPORTED}
 System Levels: {911}

SCENE TIME INTERVAL IN MINUTES	PATIENT TYPE								SCENE TIME INTERVAL TOTALS		
	Medical		Obstetric		Psychiatric		Trauma		Number	% of Tot	Cumulative %
	Number	% of Tot	Number	% of Tot	Number	% of Tot	Number	% of Tot	Number	% of Tot	Cumulative %
0.00 - 1.99	669	1%	11	1%	11	1%	18	1%	709	1%	1%
2.00 - 3.99	1576	3%	65	7%	67	4%	36	1%	1744	3%	4%
4.00 - 5.99	4265	7%	166	19%	149	10%	160	5%	4740	7%	11%
6.00 - 7.99	7930	13%	195	22%	231	15%	329	9%	8685	13%	25%
8.00 - 9.99	10264	17%	152	17%	294	20%	487	14%	11197	17%	42%
10.00 - 11.99	10068	17%	77	9%	283	19%	501	14%	10929	17%	59%
12.00 - 13.99	7699	13%	77	9%	195	13%	391	11%	8362	13%	72%
14.00 - 15.99	5201	9%	34	4%	96	6%	330	9%	5661	9%	80%
16.00 - 17.99	3484	6%	24	3%	45	3%	251	7%	3804	6%	86%
18.00 - 19.99	2256	4%	13	1%	34	2%	204	6%	2507	4%	90%
> 19.99	5453	9%	55	6%	93	6%	780	22%	6381	10%	100%
TOTALS	58865	100%	869	100%	1498	100%	3487	100%	64719	100%	100%
Minimum:	0.00 minutes		0.00 minutes		0.00 minutes		0.00 minutes		0.00 minutes		
Maximum:	208.00 minutes		42.00 minutes		53.00 minutes		145.00 minutes		208.00 minutes		
Average:	11.56 minutes		8.90 minutes		10.27 minutes		14.54 minutes		11.65 minutes		
Std Dev:	6.56 minutes		5.61 minutes		5.58 minutes		8.40 minutes		6.68 minutes		
90 %ile:	19.00 minutes		16.00 minutes		16.00 minutes		26.00 minutes		19.00 minutes		
95 %ile:	23.00 minutes		21.00 minutes		20.00 minutes		29.00 minutes		24.00 minutes		

Number of records selected by query: 80264
 Number of records with
 unknown Scene Time Interval or unknown Patient Type: 15545 19%
 NOTE: Columns with totals of zero have been excluded.

NOTE: Scene Time Interval is defined as
 Time Arrived Scene to Time Left Scene

Patients Per Scene Time Interval By Patient Type

from EMS Data Pro, Version 9.84

by Inspironix, Inc., for the Sacramento County EMS Agency

Report Number: 809256433 04/01/2008 15:40

Saved Query Name: 2007
 Call Dates: From 01/01/2007 Through 12/31/2007
 Call Types: {SCENE}
 Call Dispositions: {PT TRANSPORTED}
 Codes of Transport: 3
 System Levels: {911}

SCENE TIME INTERVAL IN MINUTES	PATIENT TYPE								SCENE TIME INTERVAL TOTALS		
	Medical		Obstetric		Psychiatric		Trauma		Number	% of Tot	Cumulative %
	Number	% of Tot	Number	% of Tot	Number	% of Tot	Number	% of Tot	Number	% of Tot	
0.00 - 1.99	19	1%					5	1%	24	1%	1%
2.00 - 3.99	31	1%	3	5%	1	2%	5	1%	40	1%	2%
4.00 - 5.99	86	3%	10	16%	3	5%	30	6%	129	3%	5%
6.00 - 7.99	247	8%	9	15%	12	18%	69	15%	337	9%	14%
8.00 - 9.99	494	16%	19	31%	16	25%	92	19%	621	16%	30%
10.00 - 11.99	584	18%	5	8%	10	15%	88	19%	687	18%	49%
12.00 - 13.99	521	16%	7	11%	9	14%	53	11%	590	16%	64%
14.00 - 15.99	389	12%	2	3%	8	12%	32	7%	431	11%	76%
16.00 - 17.99	264	8%	4	7%	2	3%	32	7%	302	8%	84%
18.00 - 19.99	180	6%	1	2%	2	3%	23	5%	206	5%	89%
> 19.99	364	11%	1	2%	2	3%	43	9%	410	11%	100%
TOTALS	3179	100%	61	100%	65	100%	472	100%	3777	100%	100%
Minimum:	0.00 minutes		3.00 minutes		2.00 minutes		0.00 minutes		0.00 minutes		
Maximum:	41.00 minutes		20.00 minutes		23.00 minutes		75.00 minutes		75.00 minutes		
Average:	12.91 minutes		8.99 minutes		10.40 minutes		11.73 minutes		12.66 minutes		
Std Dev:	5.49 minutes		3.97 minutes		4.08 minutes		7.09 minutes		5.72 minutes		
90 %ile:	20.00 minutes		15.00 minutes		15.00 minutes		19.00 minutes		20.00 minutes		
95 %ile:	23.00 minutes		17.00 minutes		18.00 minutes		23.00 minutes		23.00 minutes		

Number of records selected by query: 4199
 Number of records with unknown Scene Time Interval or unknown Patient Type: 422 10%
 NOTE: Columns with totals of zero have been excluded.

NOTE: Scene Time Interval is defined as
 Time Arrived Scene to Time Left Scene

Patients Per Receiving Hospital

from EMS Data Pro, Version 9.84

by Inspironix, Inc., for the Sacramento County EMS Agency

Report Number: 809152606 03/31/2008 14:36

Saved Query Name: 2007
Call Dates: From 01/01/2007 Through 12/31/2007
Call Types: {SCENE}
Call Dispositions: {PT TRANSPORTED TO ED}
System Levels: {911}

RECEIVING HOSPITAL	RECEIVING HOSPITAL TOTALS	
	Number	% of Tot
Dameron Community Hospital	1	0%
Kaiser North Hospital	8344	10%
Kaiser Roseville Hospital	2926	4%
Kaiser South Hospital	7190	9%
Lodi Memorial Hospital	460	1%
Mercy General Hospital	7194	9%
Methodist Hospital	7935	10%
Mercy Of Folsom Hospital	869	1%
Mercy San Juan Medical Center	14559	18%
Other	92	0%
Sutter Roseville Medical Center	1931	2%
Sutter General Hospital	9451	12%
San Joaquin General Hospital	55	0%
Saint Joseph's Hospital	7	0%
Sutter Memorial Hospital	3864	5%
UC Davis Medical Center	14909	19%
TOTALS	79787	100%

Number of records selected by query: 79820

Number of records with

unknown Receiving Hospital: 33 0%

NOTE: Rows with totals of zero have been excluded.

Patients Per Receiving Hospital By Patient Type

from EMS Data Pro, Version 9.84

by Inspironix, Inc., for the Sacramento County EMS Agency

Report Number: 809152476 03/31/2008 14:34

Saved Query Name: 2007
 Call Dates: From 01/01/2007 Through 12/31/2007
 Call Types: {SCENE}
 Call Dispositions: {PT TRANSPORTED TO ED}
 System Levels: {911}

RECEIVING HOSPITAL	PATIENT TYPE								RECEIVING HOSPITAL TOTALS	
	Medical		Obstetric		Psychiatric		Trauma		Number	% of Tot
	Number	% of Tot	Number	% of Tot	Number	% of Tot	Number	% of Tot		
Dameron Community Hospital	1	0%							1	0%
Kaiser North Hospital	6775	11%	81	9%	168	11%	330	9%	7354	11%
Kaiser Roseville Hospital	2692	4%	6	1%	82	5%	94	3%	2874	4%
Kaiser South Hospital	5043	8%	55	6%	108	7%	146	4%	5352	8%
Lodi Memorial Hospital	359	1%	2	0%	5	0%			366	1%
Mercy General Hospital	5517	9%	116	13%	37	2%	212	6%	5882	9%
Methodist Hospital	5678	9%	59	7%	172	11%	157	4%	6066	9%
Mercy Of Folsom Hospital	794	1%	4	0%	29	2%	23	1%	850	1%
Mercy San Juan Medical Center	12147	20%	181	21%	502	33%	1065	30%	13895	21%
Other	64	0%	2	0%			7	0%	73	0%
Sutter Roseville Medical Center	1732	3%	13	2%	49	3%	98	3%	1892	3%
Sutter General Hospital	6707	11%	11	1%	87	6%	291	8%	7096	11%
San Joaquin General Hospital	48	0%	1	0%	1	0%			50	0%
Saint Joseph's Hospital	6	0%			1	0%			7	0%
Sutter Memorial Hospital	3010	5%	183	21%	64	4%	98	3%	3355	5%
UC Davis Medical Center	9376	16%	151	17%	196	13%	1004	28%	10727	16%
TOTALS	59949	100%	865	100%	1501	100%	3525	100%	65840	100%

Number of records selected by query: 79820

Number of records with

unknown Receiving Hospital or unknown Patient Type: 13980 18%

NOTE: Columns and rows with totals of zero have been excluded.