

Sacramento County
Report For January Through December 2005
9-1-1 Paramedic Ambulance Services

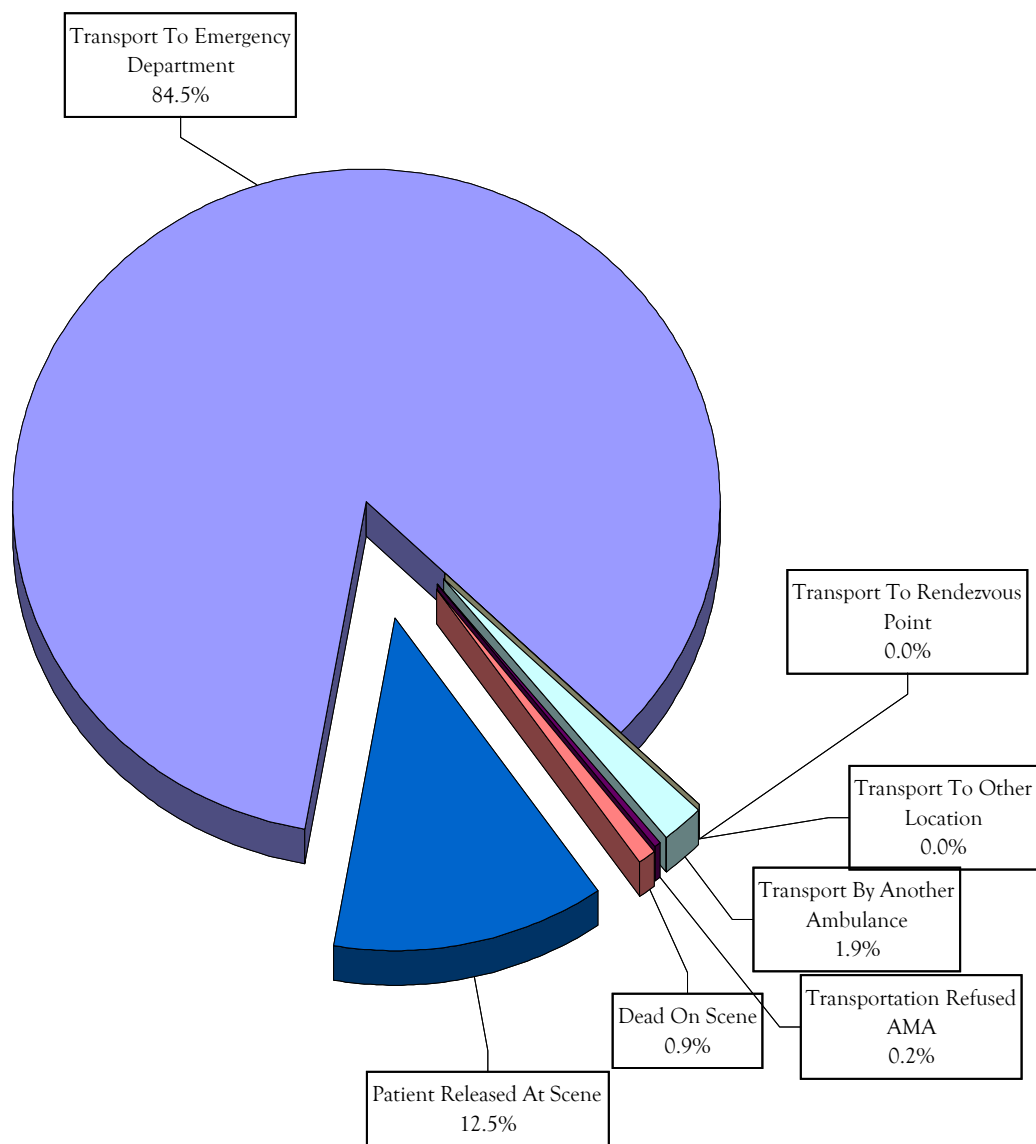
Based on data submitted by
Sacramento County Advanced Life Support Service Providers

Prepared for
The Sacramento County EMS Agency
9616 Micron Avenue, Suite 635
Sacramento, CA 95827
(916) 875-9753

By
Inspironix, Inc.
(916) 488-3222

Records included in these reports include 911 medical aid scene calls where patient contact was made. The total records entered into our database for January through December 2005 meeting these criteria were 81,783. We estimate that an additional 4.82% of the patient care records meeting these criteria did not get included in the database. Our estimated total number of patients at 911 medical aid scene calls for January through December 2005 is 85,923.

Percentage Of Calls By Call Disposition



Call Disposition	
Transport To Emergency Department	69068
Transport To Rendezvous Point	0
Transport To Other Location	36
Transport By Another Ambulance	1568
Transportation Refused AMA	174
Dead On Scene	719
Patient Released At Scene	10218
	81783

Percentage Of Transported Patients By Receiving Hospital

Receiving Hospital	Medical (80.1% of Total)	Obstetric (0.9% of Total)	Psychiatric (2.5% of Total)	Trauma (16.6% of Total)	Total
Kaiser North	13%	7%	12%	8%	12%
Kaiser Roseville	4%	0%	6%	1%	4%
Kaiser South	7%	3%	5%	7%	7%
Mercy General	10%	17%	3%	9%	10%
Methodist	8%	8%	9%	5%	7%
Mercy of Folsom	1%	0%	2%	0%	1%
Mercy San Juan	21%	23%	40%	17%	21%
Sutter Roseville Medical Center	3%	1%	4%	1%	3%
Sutter General	11%	1%	3%	13%	11%
Sutter Memorial	6%	27%	4%	4%	6%
UC Davis Medical Center	15%	12%	10%	33%	18%
Other	1%	0%	1%	0%	1%
Total	100%	100%	100%	100%	100%

Percentage Of Transported Patients By Receiving Hospital

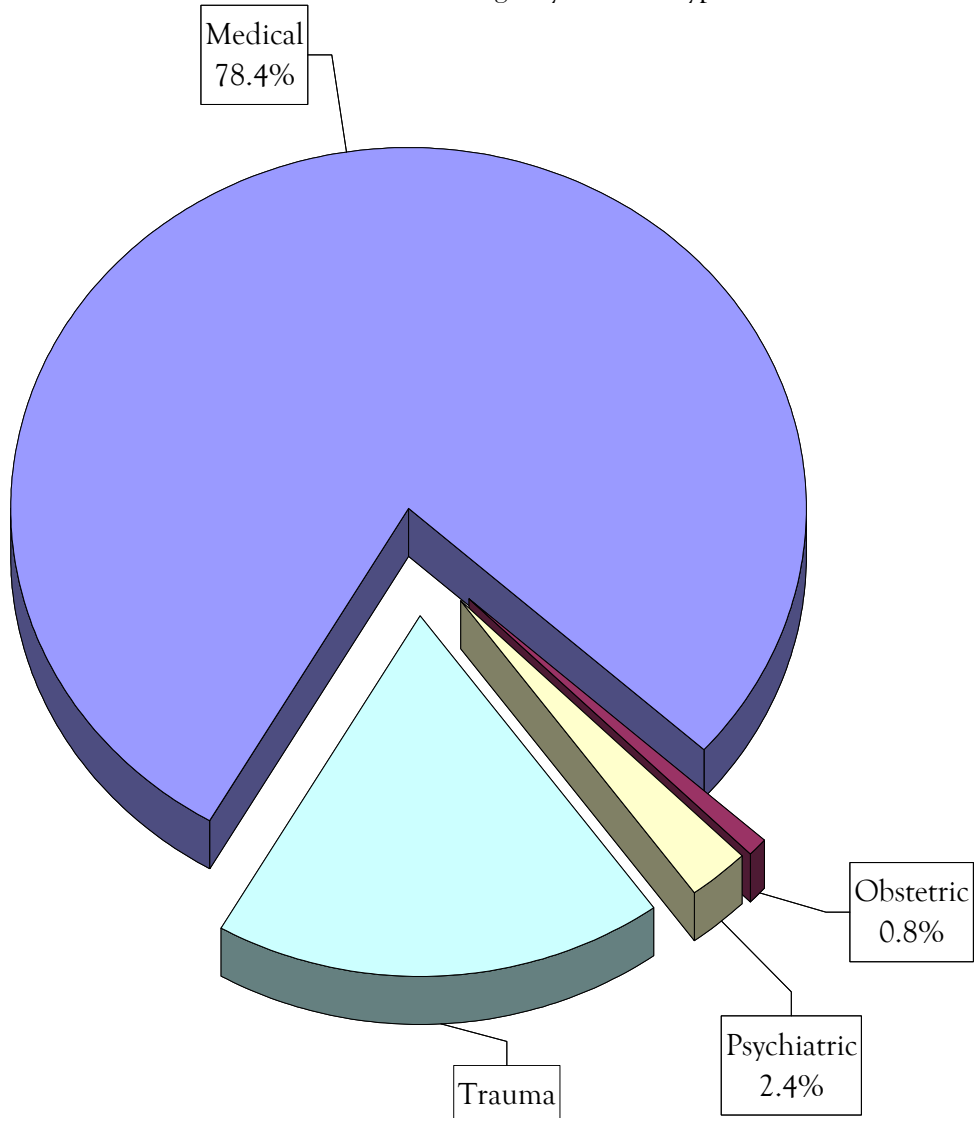
	Medical	Obstetric	Psychiatric	Trauma	
Receiving Hospital	80.1%	0.9%	2.5%	16.6%	100.0%
Kaiser North	4991	27	141	617	5776
Kaiser Roseville	1622	2	75	109	1808
Kaiser South	2740	14	62	560	3376
Mercy General	3780	70	39	693	4582
Methodist	2840	33	100	424	3397
Mercy of Folsom	472	1	24	33	530
Mercy San Juan	7804	91	462	1356	9713
Sutter Roseville Medical Ce	1179	6	50	115	1350
Sutter General	4065	3	31	1012	5111
Sutter Memorial	2299	107	52	274	2732
UC Davis Medical Center	5628	49	114	2594	8385
Other	280	0	6	21	307
Totals	37700	403	1156	7808	47067

Percentage Of Patients Per Age By Patient Type

Age	Medical (78.4% of Total)	Obstetric (0.8% of Total)	Psychiatric (2.4% of Total)	Trauma (18.4% of Total)	Total
< 1 Month	0%	0%	0%	0%	0%
1-11 Months	1%	0%	0%	1%	1%
1-4 Years	2%	0%	0%	2%	2%
5-14 Years	2%	1%	2%	5%	3%
15-18 Years	3%	9%	4%	6%	4%
19-44 Years	27%	88%	34%	40%	30%
45-64 Years	29%	1%	29%	24%	28%
65-69 Years	6%	0%	4%	3%	5%
70-74 Years	6%	0%	6%	3%	5%
75-84 Years	15%	0%	13%	8%	14%
> 84 Years	8%	0%	8%	6%	8%
Total	100%	100%	100%	100%	100%

	Medical	Obstetric	Psychiatric	Trauma	Totals
Age	78.4%	0.8%	2.4%	18.4%	
< 1 Month	77			2	79
1-11 Months	346			62	408
1-4 Years	912			219	1131
5-14 Years	994	3	26	520	1543
15-18 Years	1187	39	50	609	1885
19-44 Years	11203	367	419	3893	15882
45-64 Years	11998	6	364	2333	14701
65-69 Years	2346		54	314	2714
70-74 Years	2387		71	310	2768
75-84 Years	6224		158	804	7186
> 84 Years	3493		106	597	4196
Totals	41167	415	1248	9663	52493

Percentage Of Patients By Patient Type
Based On "Patients Per Age By Patient Type" Table



Percentage Of Patients Per Gender By Patient Type

Gender	Medical	Obstetric	Psychiatric	Trauma	Total
Male	45%	0%	47%	50%	46%
Female	55%	100%	53%	50%	54%
Total	100%	100%	100%	100%	100%

Percentage Of Patients Per Age By Gender

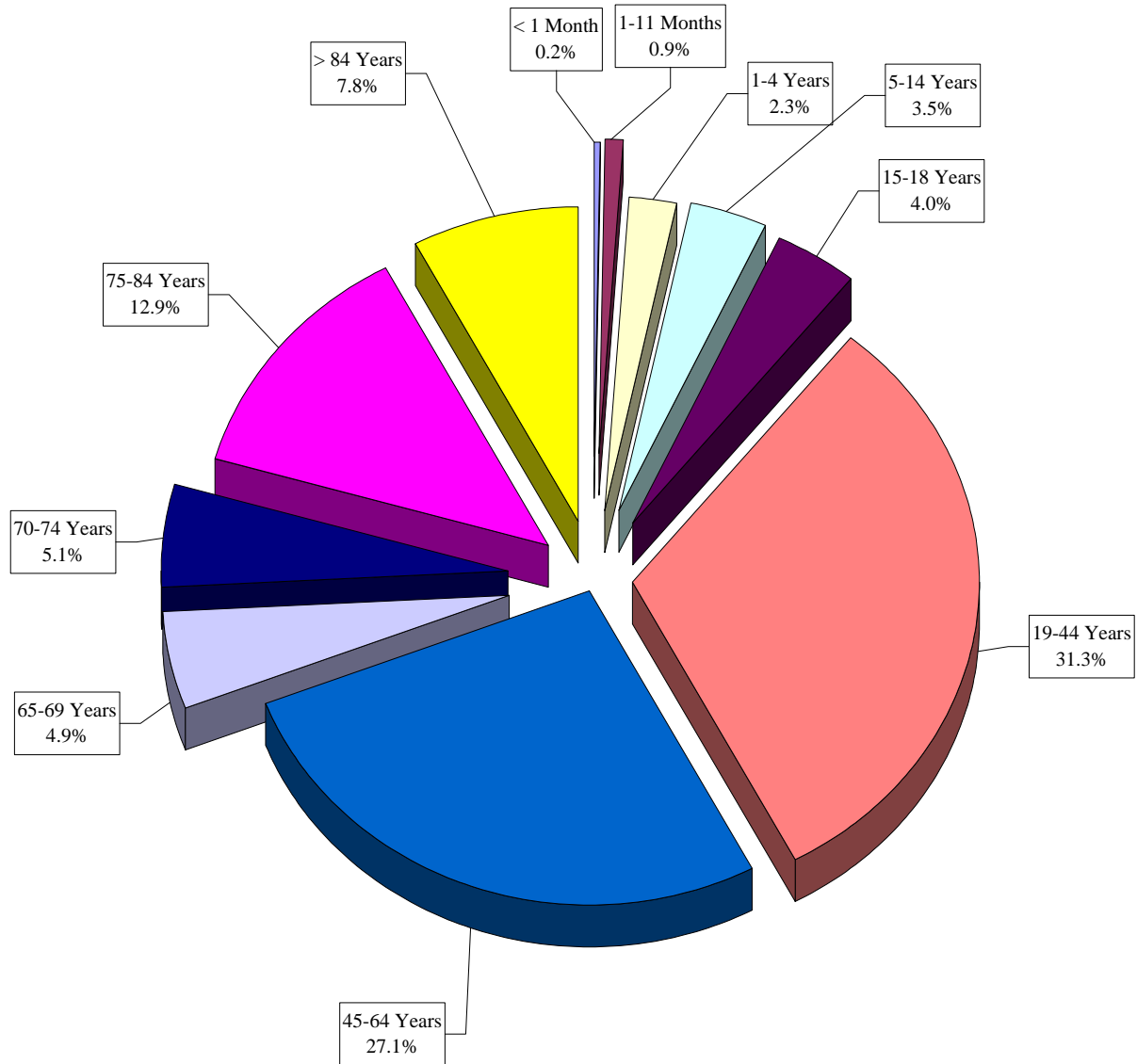
Age	Male (45.7% of Total)	Female (54.3% of Total)	Total
< 1 Month	0%	0%	0%
1-11 Months	1%	1%	1%
1-4 Years	3%	2%	2%
5-14 Years	4%	3%	3%
15-18 Years	4%	4%	4%
19-44 Years	32%	31%	31%
45-64 Years	29%	26%	27%
65-69 Years	5%	5%	5%
70-74 Years	5%	5%	5%
75-84 Years	12%	14%	13%
> 84 Years	6%	10%	8%
Total	100%	100%	100%

Gender	Medical	Obstetric	Psychiatric Trauma	Total	
Male	18790		589	4963	24342
Female	22984	395	657	4872	28908
Total	41774	395	1246	9835	53250

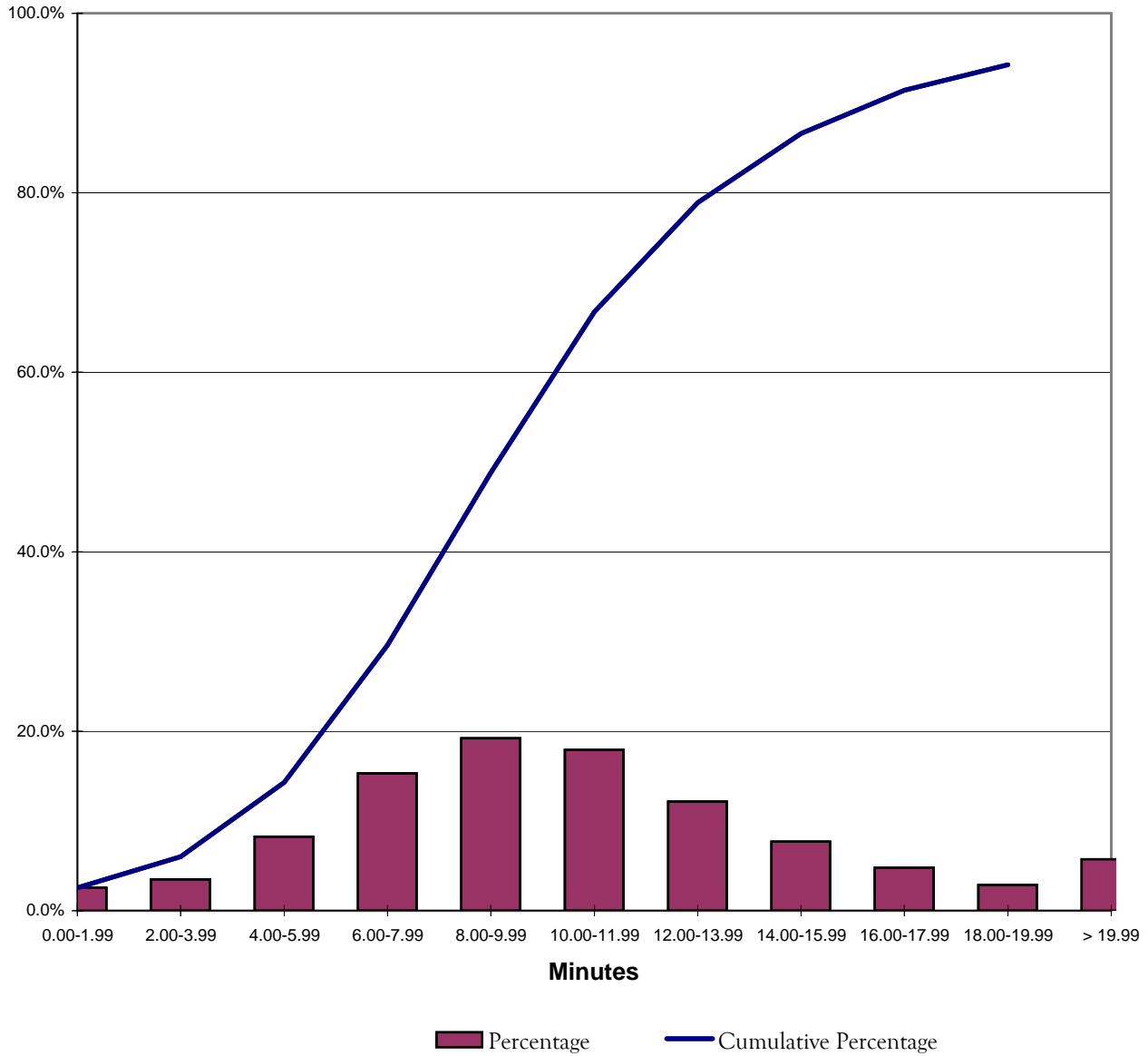
0.456948 0.543052

Age	Male	Female	Total
< 1 Month	65	67	132
1-11 Months	364	326	690
1-4 Years	1120	744	1864
5-14 Years	1585	1201	2786
15-18 Years	1457	1750	3207
19-44 Years	11663	13490	25153
45-64 Years	10473	11336	21809
65-69 Years	1781	2189	3970
70-74 Years	1856	2254	4110
75-84 Years	4306	6070	10376
> 84 Years	2043	4204	6247
Total	36713	43631	80344

Percentage Of Patients By Age



Percentage Of Calls By Scene Time Interval Transported Patients Only



	Number	% of Total	Cumulative
0.00-1.99	1194	3%	3%
2.00-3.99	1637	3%	6%
4.00-5.99	3878	8%	14%
6.00-7.99	7194	15%	30%
8.00-9.99	9031	19%	49%
10.00-11.99	8421	18%	67%
12.00-13.99	5709	12%	79%
14.00-15.99	3615	8%	87%
16.00-17.99	2255	5%	91%
18.00-19.99	1346	3%	94%
> 19.99	2688	6%	100%
	46968	100%	