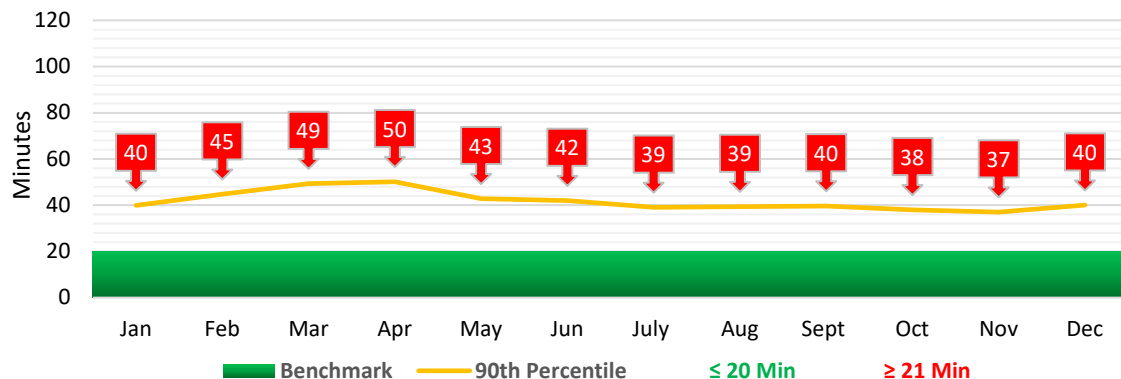


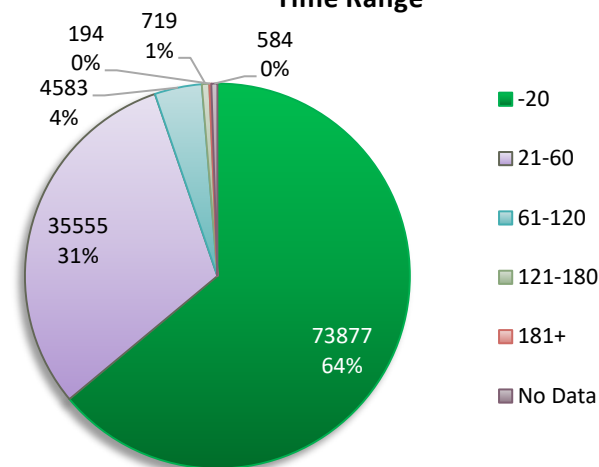
SYSTEM 1 & 2 / 2019 JANUARY - DECEMBER

APOT-1 represents the time (in minutes) under which 90% of patients have their care transferred from EMS to hospital staff. APOT-2 is the percentage to patients whose care is transferred from EMS to hospital staff by designated time frames (see graph key for time frames).

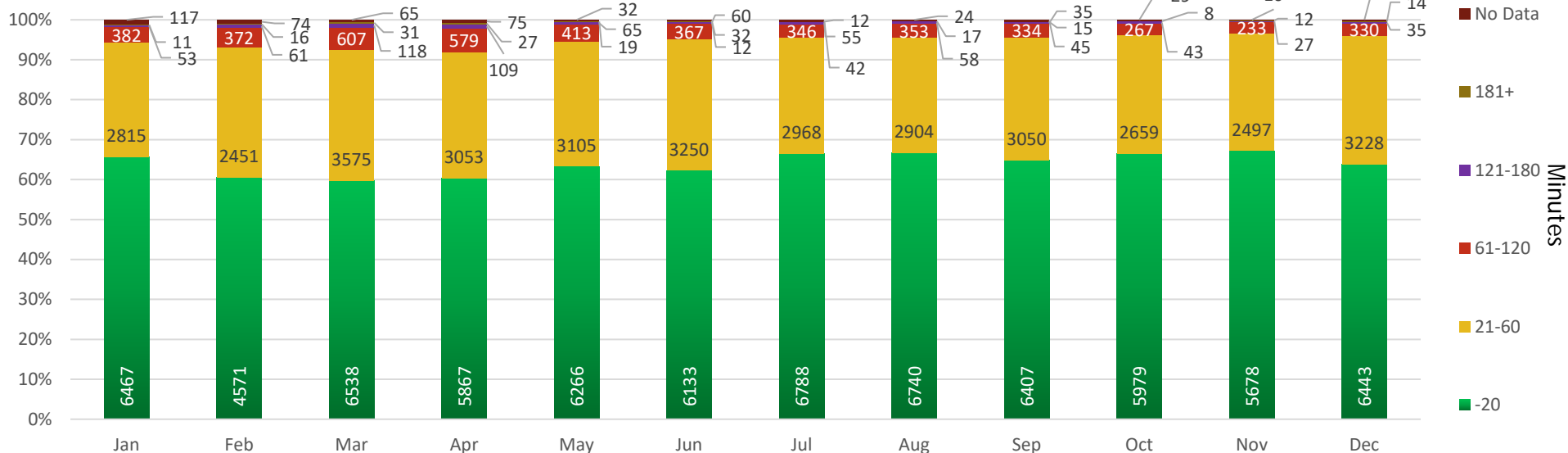
APOT 1 - 90th Percentile



APOT 2 Year to Date / Count & Percentages per Time Range



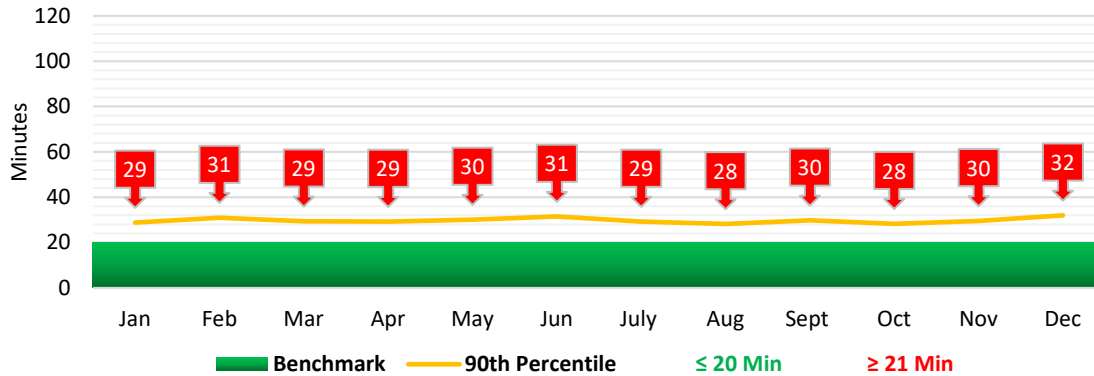
APOT 2 - Per Month



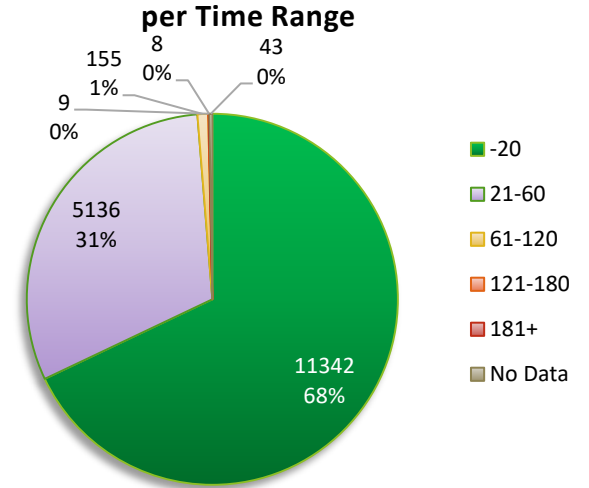
KAISER NORTH APOT 1 & 2 / 2019 JANUARY - DECEMBER

APOT-1 represents the time (in minutes) under which 90% of patients have their care transferred from EMS to hospital staff. APOT-2 is the percentage to patients whose care is transferred from EMS to hospital staff by designated time frames (see graph key for time frames).

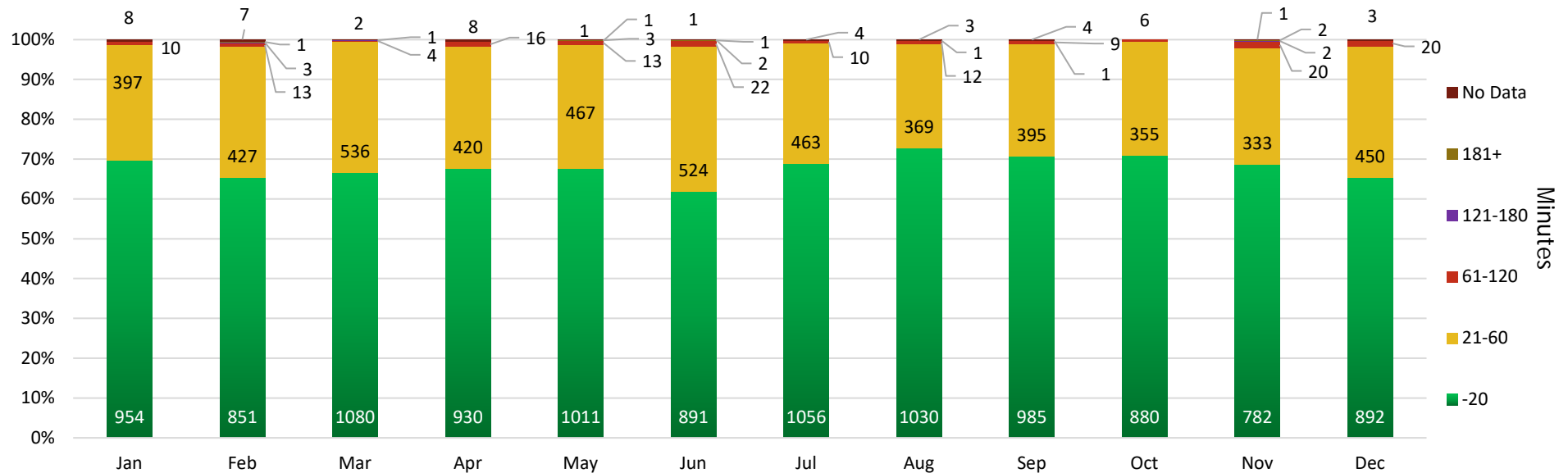
APOT 1 - 90th Percentile



APOT 2 Year to Date / Count & Percentages per Time Range



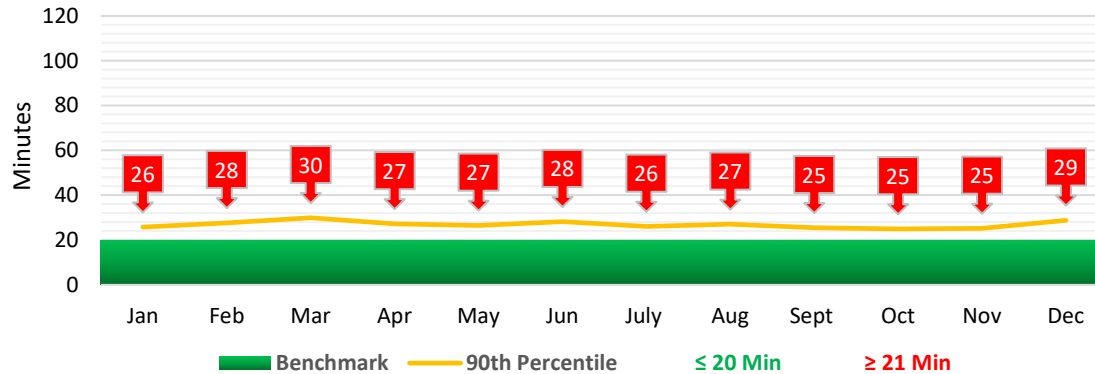
APOT 2 - Per Month



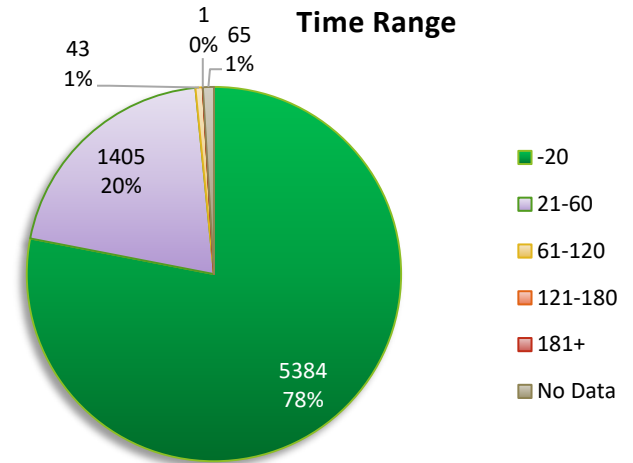
KAISER ROSEVILLE APOT 1 & 2 / 2019 JANUARY - DECEMBER

APOT-1 represents the time (in minutes) under which 90% of patients have their care transferred from EMS to hospital staff. APOT-2 is the percentage to patients whose care is transferred from EMS to hospital staff by designated time frames (see graph key for time frames).

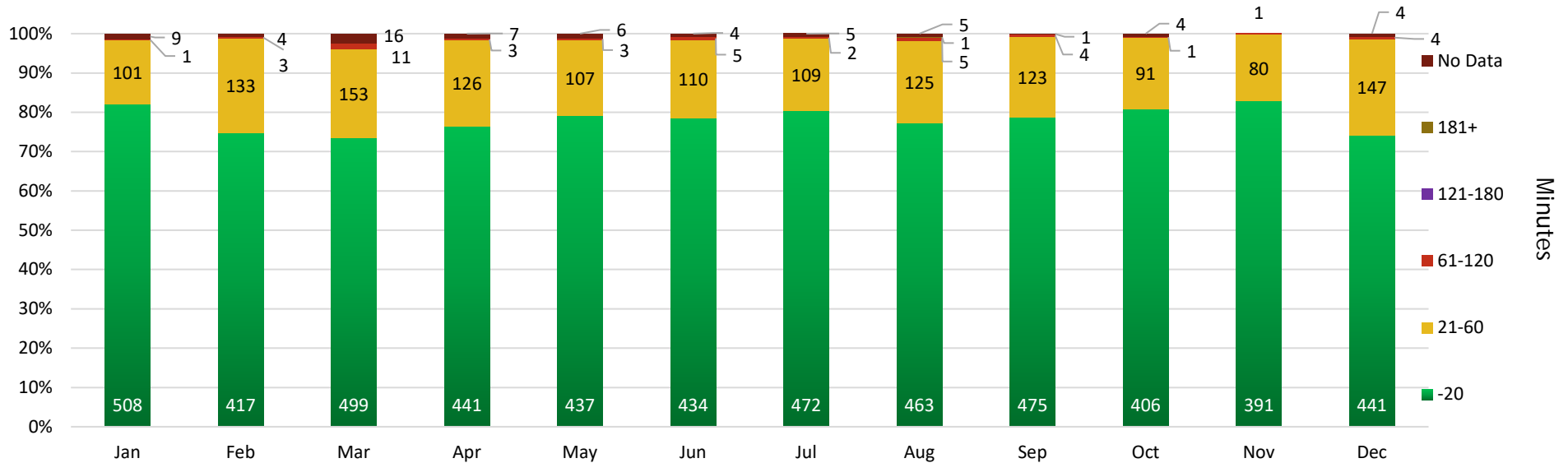
APOT 1 - 90th Percentile



APOT 2 Year to Date / Count & Percentages per Time Range



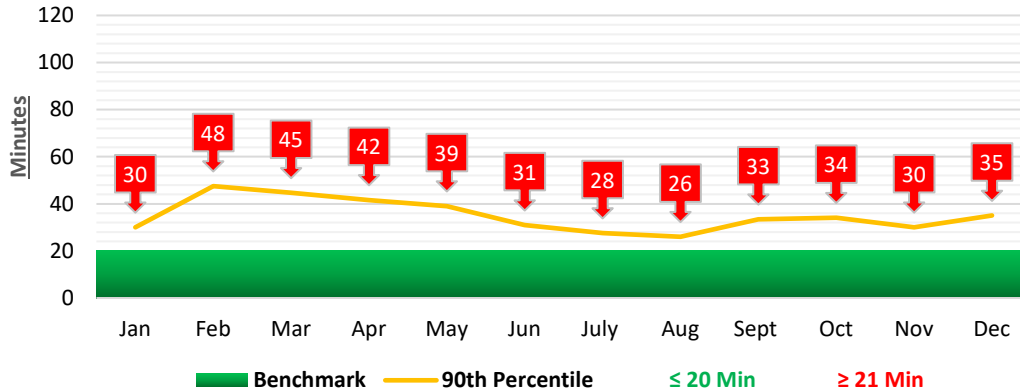
APOT 2 - Per Month



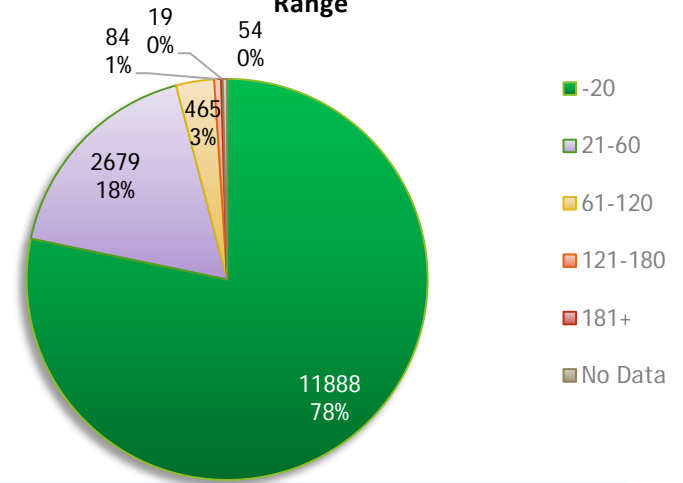
KAISER SOUTH APOT 1 & 2 / 2019 JANUARY - DECEMBER

APOT-1 represents the time (in minutes) under which 90% of patients have their care transferred from EMS to hospital staff. APOT-2 is the percentage to patients whose care is transferred from EMS to hospital staff by designated time frames (see graph key for time frames).

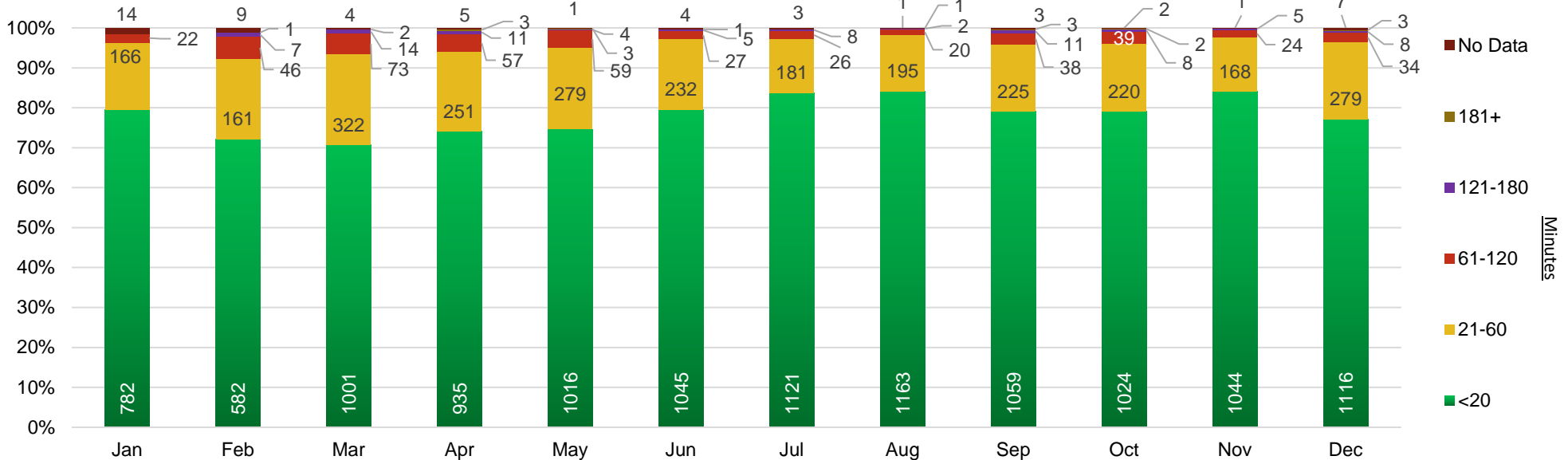
APOT 1 - 90th Percentile



APOT 2 Year to Date / Count & Percentages per Time Range



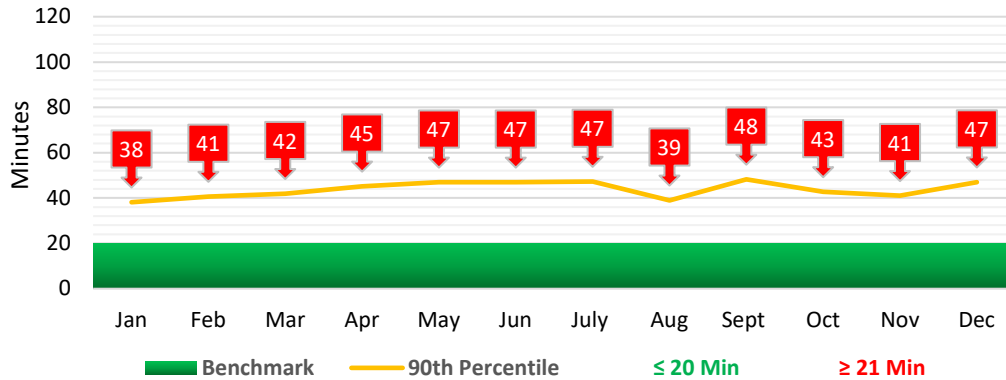
APOT 2 - Per Month



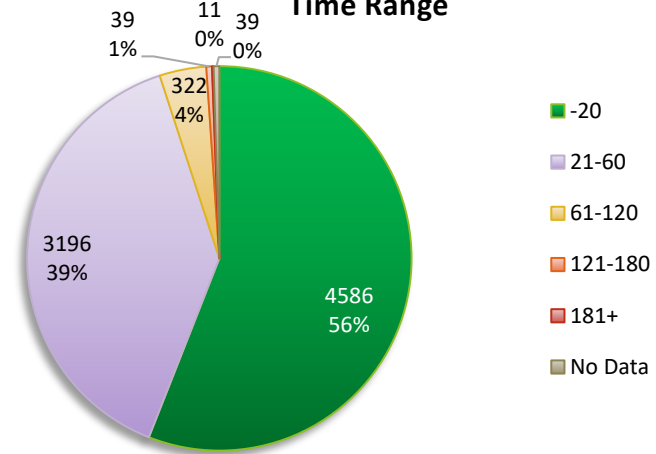
MERCY GENERAL APOT 1 & 2 / 2019 JANUARY - DECEMBER

APOT-1 represents the time (in minutes) under which 90% of patients have their care transferred from EMS to hospital staff. APOT-2 is the percentage to patients whose care is transferred from EMS to hospital staff by designated time frames (see graph key for time frames).

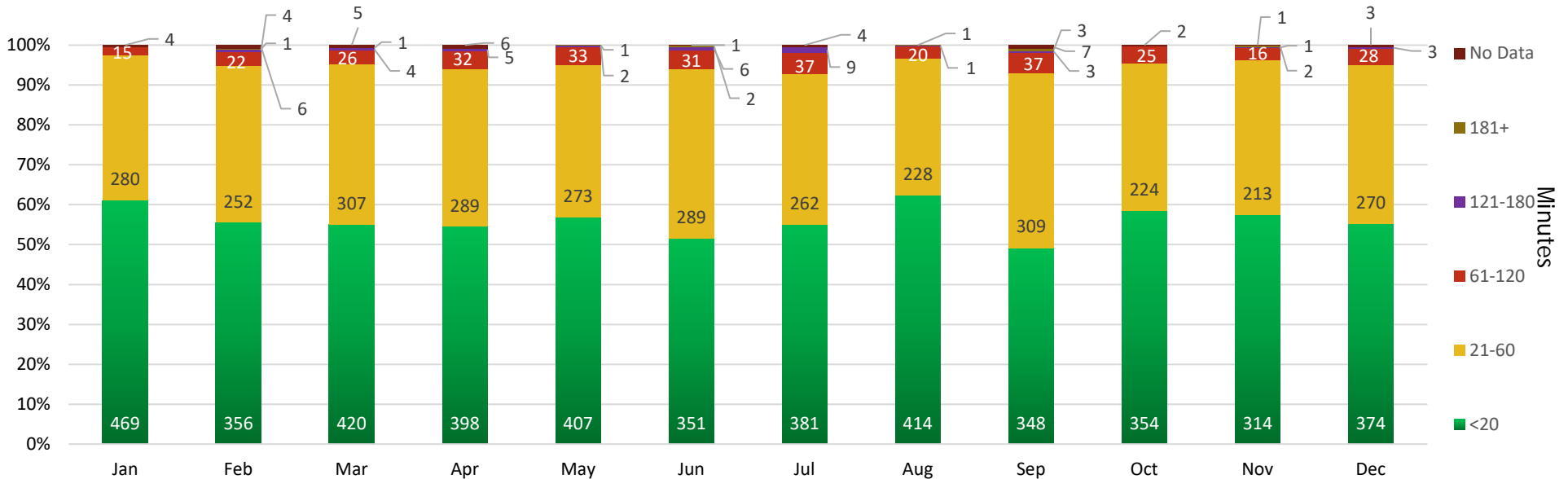
APOT 1 - 90th Percentile



APOT 2 - Year to Date / Count & Percentages per Time Range



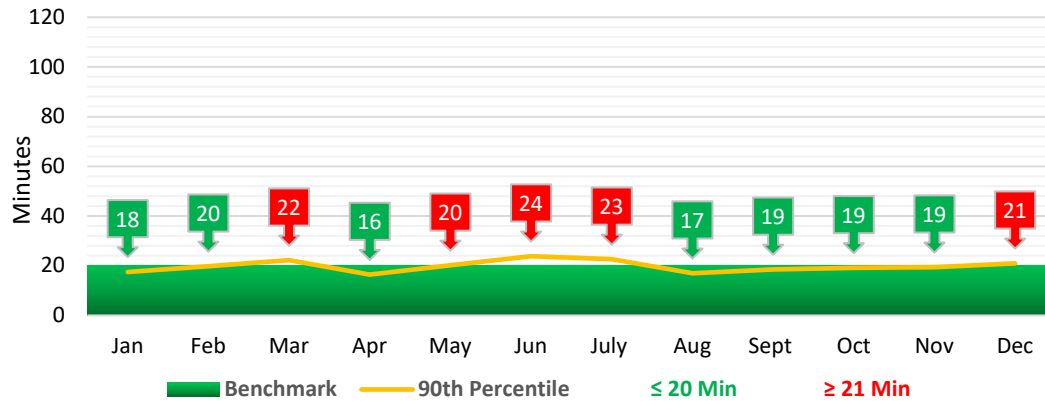
APOT 2 - Per Month



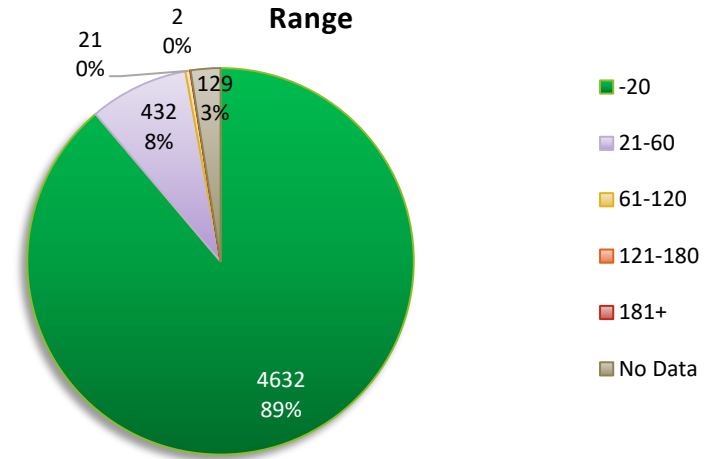
MERCY OF FOLSOM APOT 1 & 2 / 2019 JANUARY - DECEMBER

APOT-1 represents the time (in minutes) under which 90% of patients have their care transferred from EMS to hospital staff. APOT-2 is the percentage to patients whose care is transferred from EMS to hospital staff by designated time frames (see graph key for time frames).

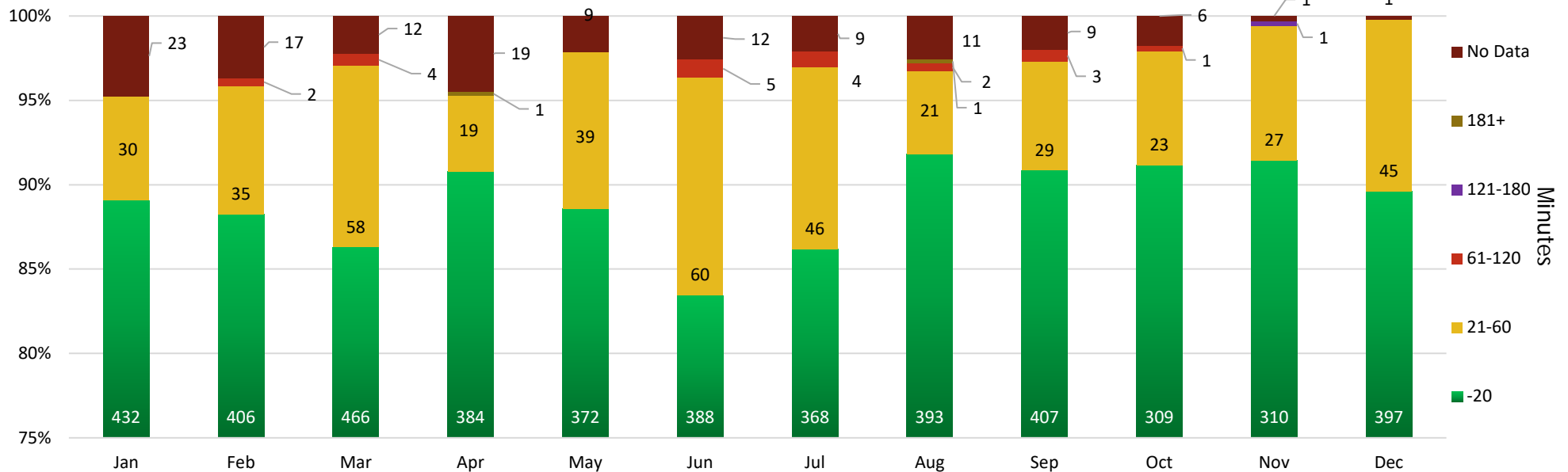
APOT 1 - 90th Percentile



APOT 2 Year to Date / Count & Percentage per Time Range



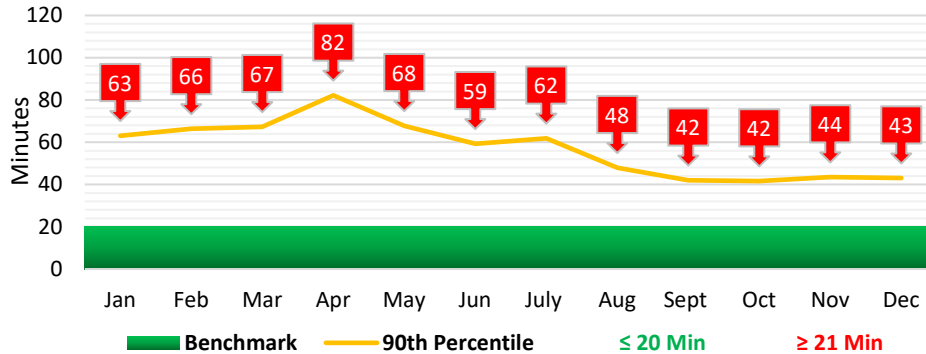
APOT 2 - Per Month



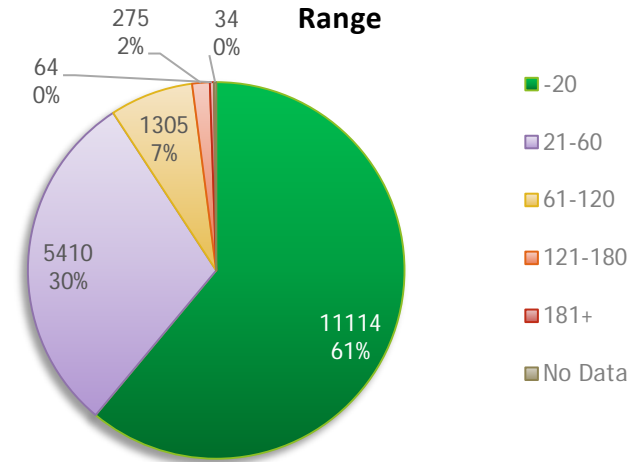
MERCY SAN JUAN APOT 1 & 2 / 2019 JANUARY - DECEMBER

APOT-1 represents the time (in minutes) under which 90% of patients have their care transferred from EMS to hospital staff. APOT-2 is the percentage to patients whose care is transferred from EMS to hospital staff by designated time frames (see graph key for time frames).

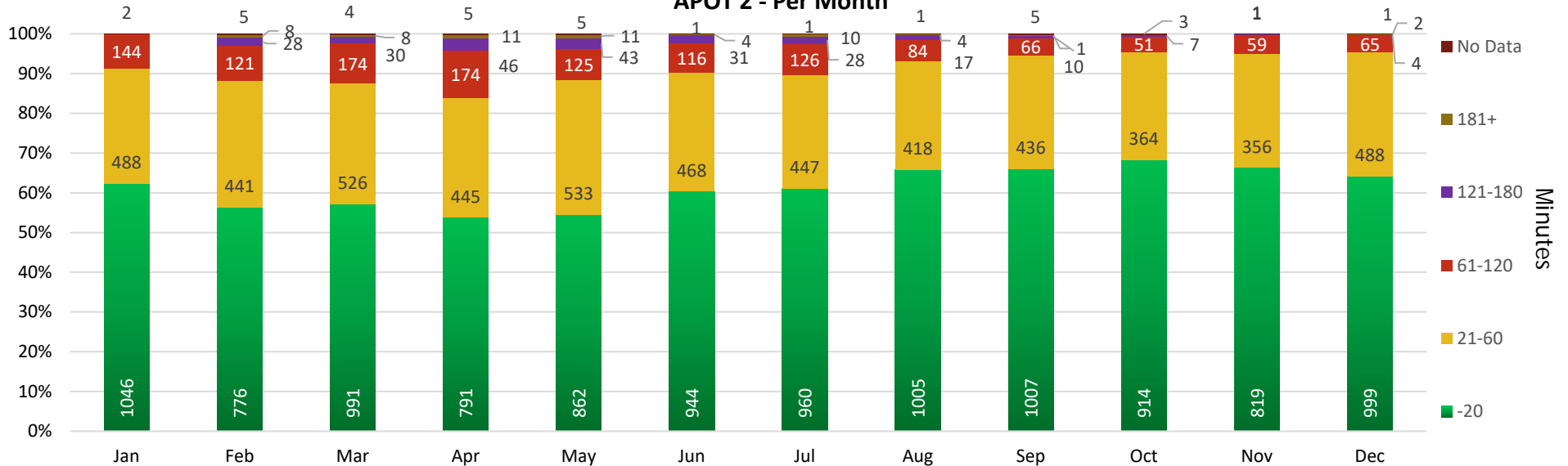
APOT 1 - 90th Percentile



APOT 2 Year to Date / Count & Percentage per Time Range



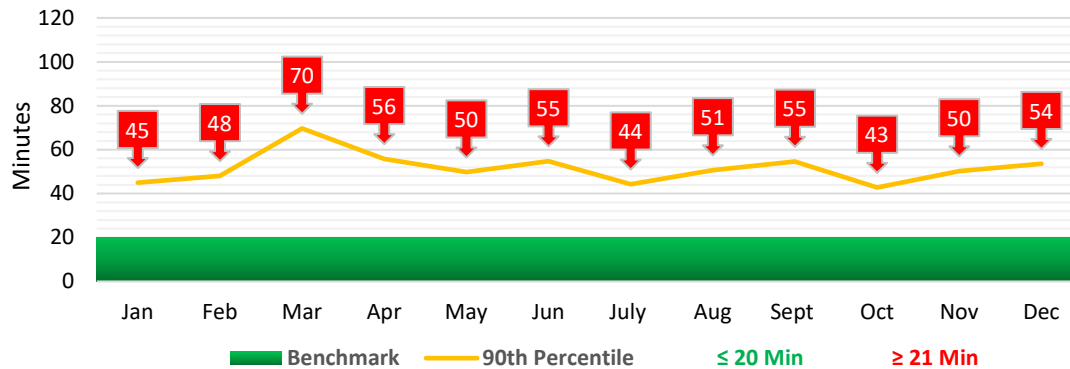
APOT 2 - Per Month



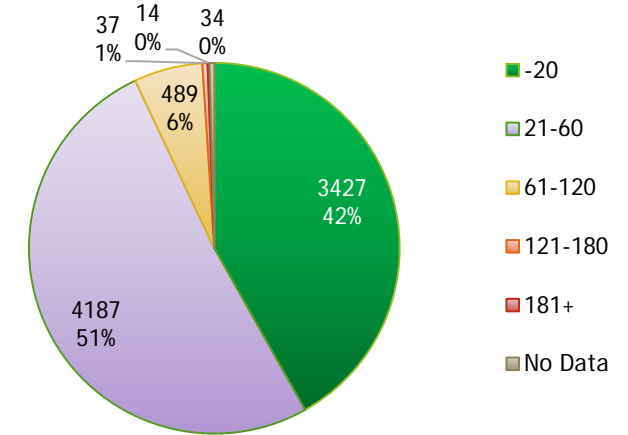
METHODIST APOT 1 & 2 / 2019 JANUARY - DECEMBER

APOT-1 represents the time (in minutes) under which 90% of patients have their care transferred from EMS to hospital staff. APOT-2 is the percentage to patients whose care is transferred from EMS to hospital staff by designated time frames (see graph key for time frames).

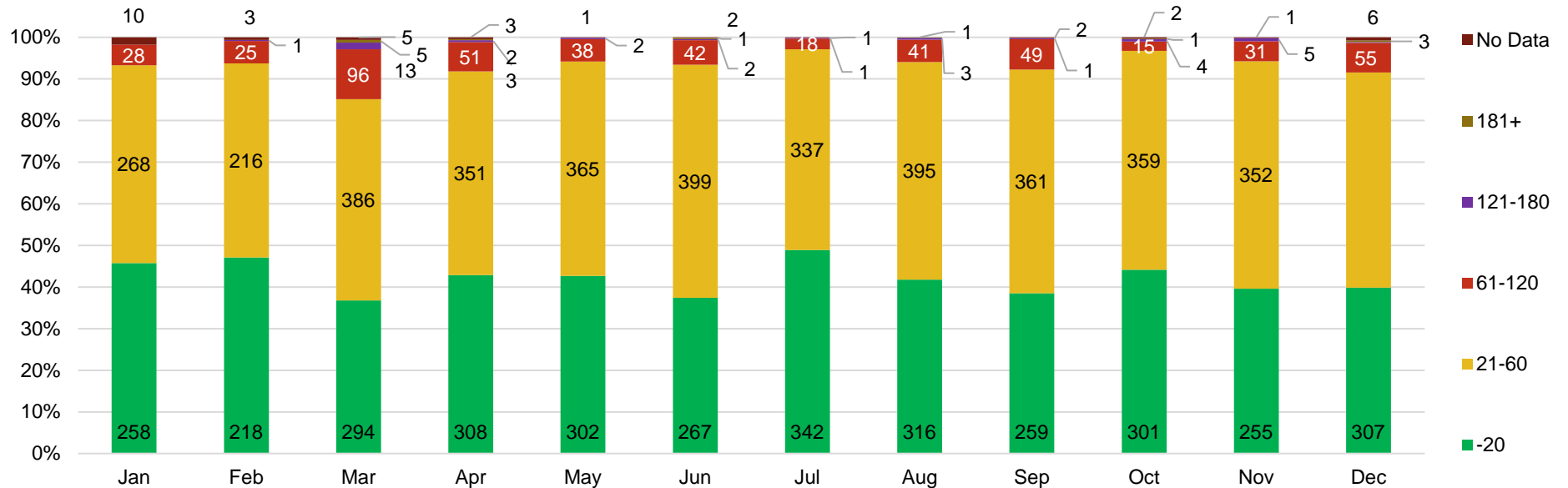
APOT 1 - 90th Percentile



APOT 2 - Year to Date / Count & Percentages per Time Range



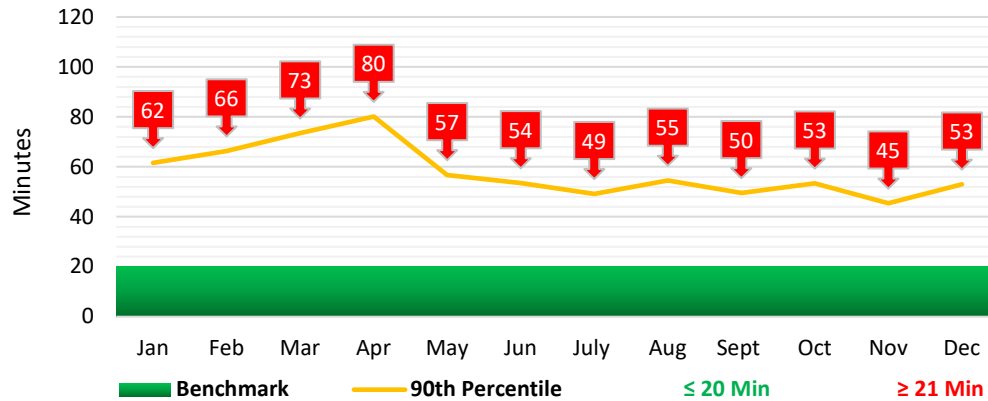
APOT 2 - Per Month



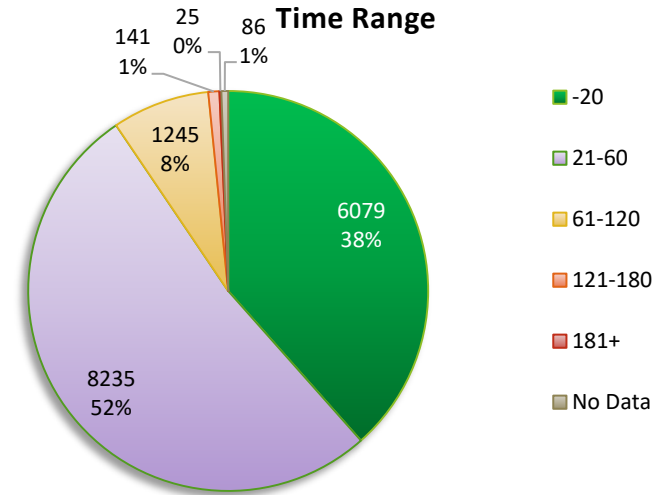
SUTTER GENERAL APOT 1 & 2 / 2019 JANUARY - DECEMBER

APOT-1 represents the time (in minutes) under which 90% of patients have their care transferred from EMS to hospital staff. APOT-2 is the percentage to patients whose care is transferred from EMS to hospital staff by designated time frames (see graph key for time frames).

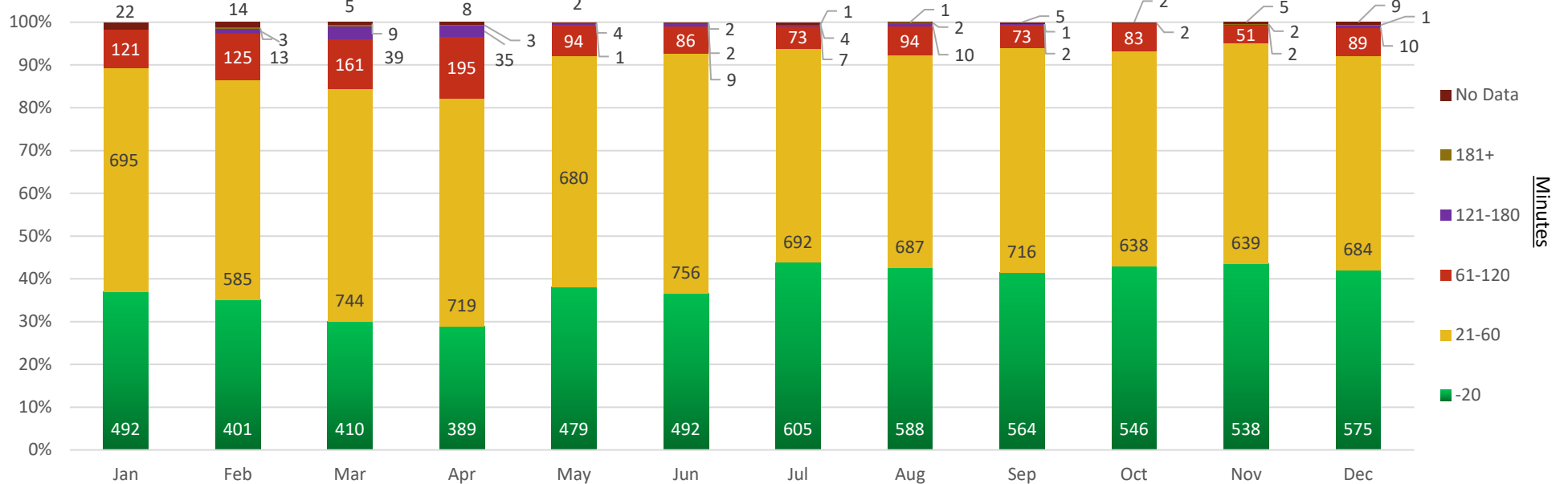
APOT 1 - 90th Percentile



APOT 2 - Year to Date / Count & Percentage per Time Range



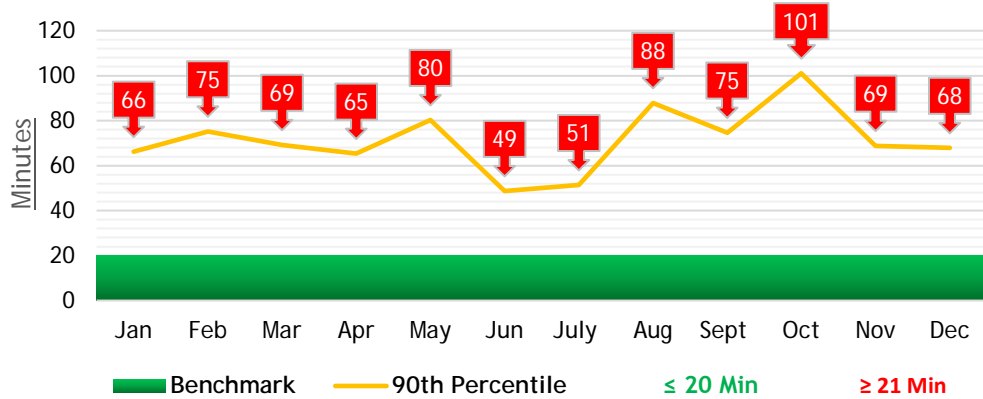
APOT 2 - Per Month



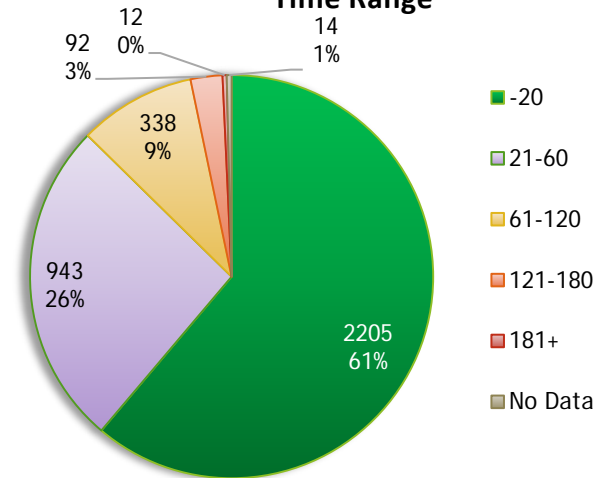
SUTTER ROSEVILLE APOT 1 & 2 / 2019 JANUARY - DECEMBER

APOT-1 represents the time (in minutes) under which 90% of patients have their care transferred from EMS to hospital staff. APOT-2 is the percentage to patients whose care is transferred from EMS to hospital staff by designated time frames (see graph key for time frames).

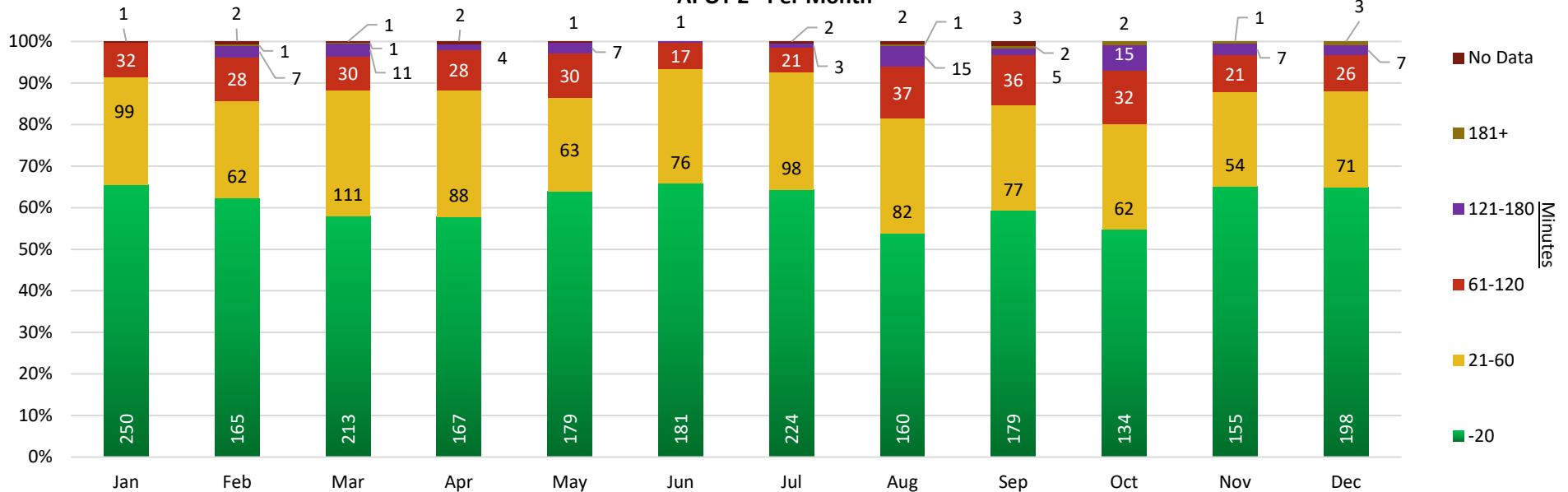
APOT 1 - 90th Percentile Per Month



APOT 2 Year to Date / Count & Percentages per Time Range



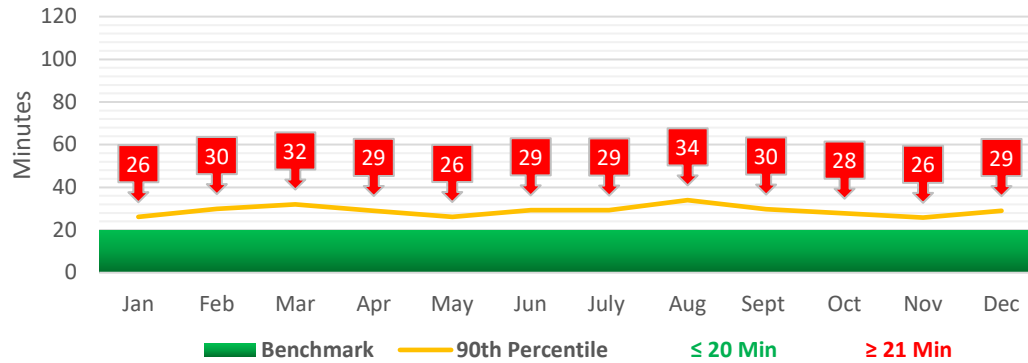
APOT 2 - Per Month



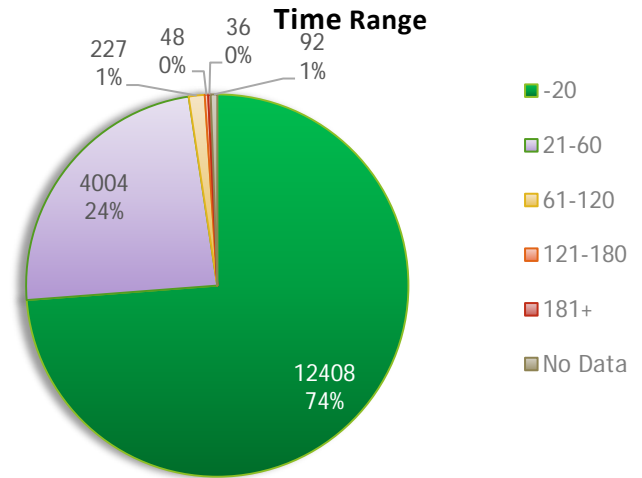
UC DAVIS APOT 1 & 2 / 2019 JANUARY - DECEMBER

APOT-1 represents the time (in minutes) under which 90% of patients have their care transferred from EMS to hospital staff. APOT-2 is the percentage to patients whose care is transferred from EMS to hospital staff by designated time frames (see graph key for time frames).

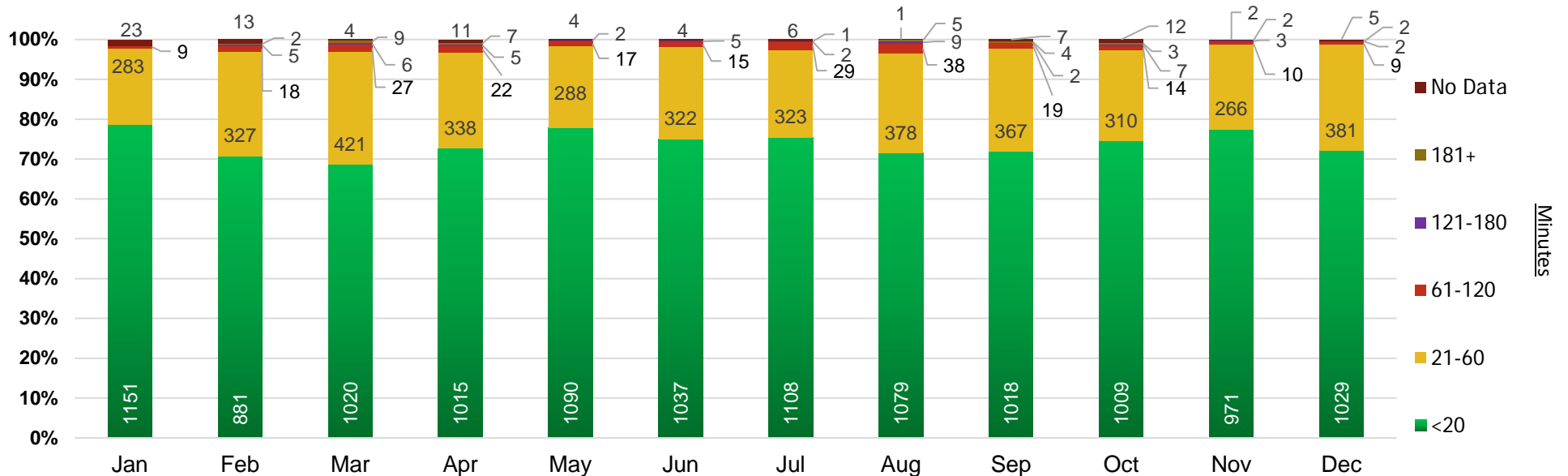
APOT 1 - 90th Percentile



APOT 2 - Year to Date / Count & Percentages per Time Range



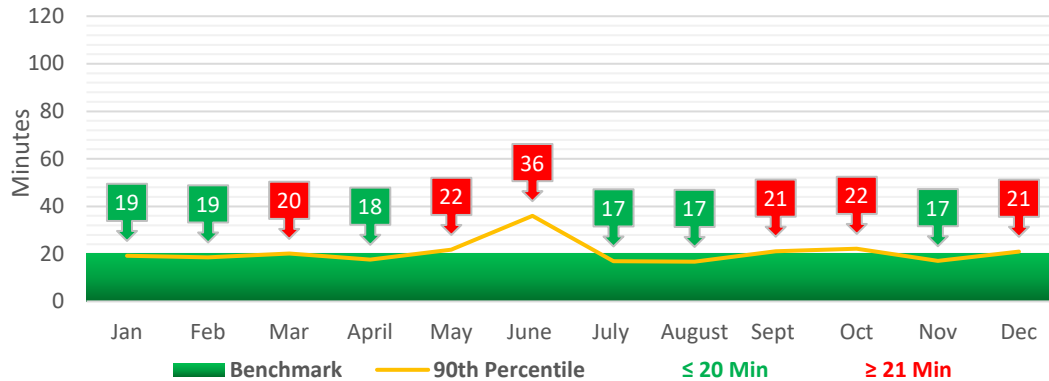
APOT 2 - Per Month



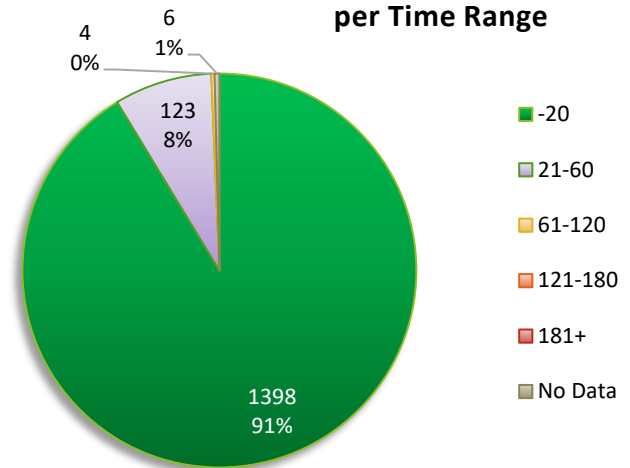
VA APOT 1 & 2 / 2019 JANUARY - DECEMBER

APOT-1 represents the time (in minutes) under which 90% of patients have their care transferred from EMS to hospital staff. APOT-2 is the percentage to patients whose care is transferred from EMS to hospital staff by designated time frames (see graph key for time frames).

APOT 1 - 90th Percentile



APOT 2 - Year to Date / Count & Percentages per Time Range



APOT 2 - Per Month

