

# Sacramento County EMS Agency APOT Summit



Where are we today?  
Why is this important?

Greg Kann MD  
Medical Director

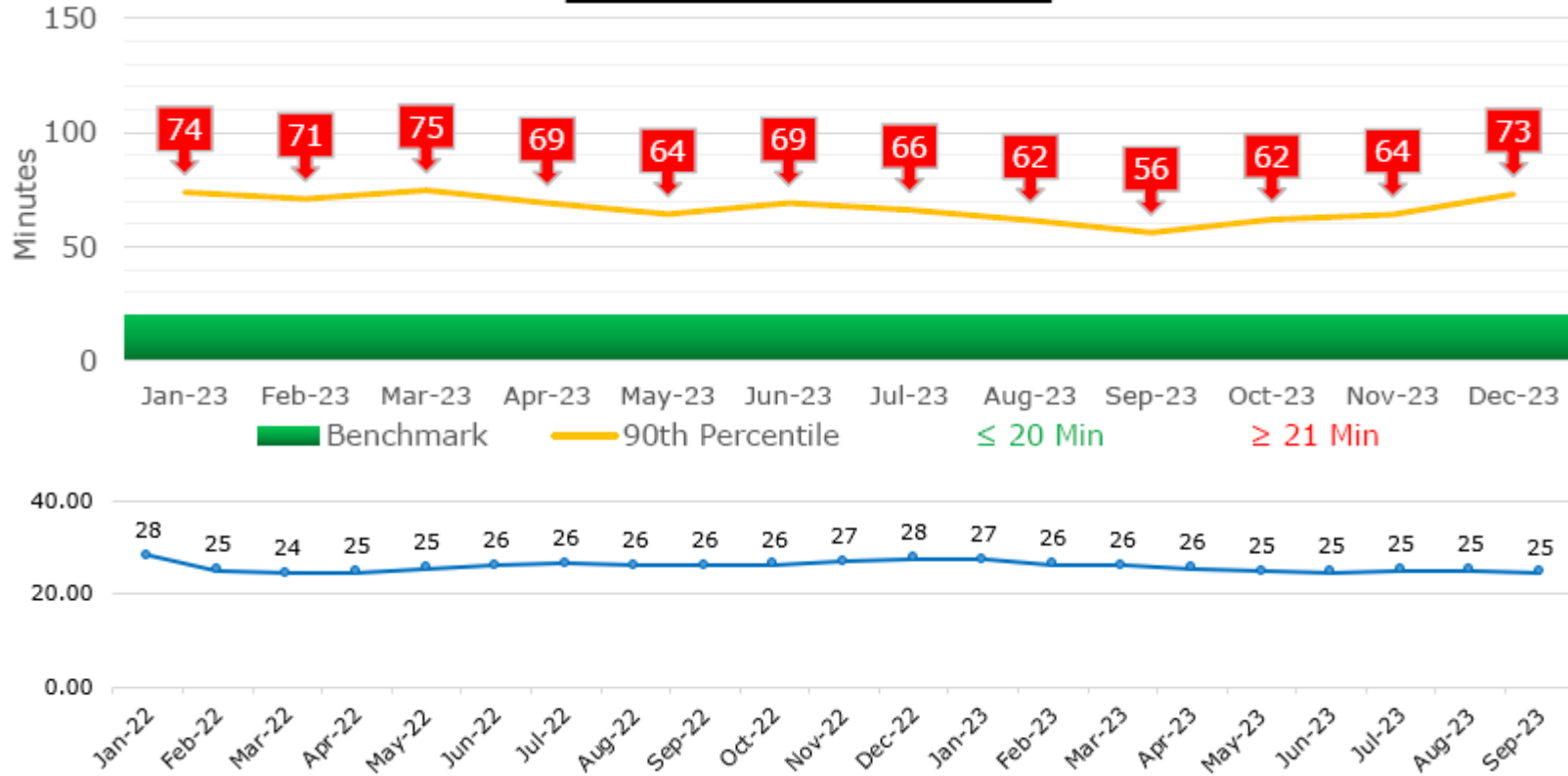
February 13, 2024





## Sacramento County Ambulance Patient Offload (APOT) Times:

**APOT 1 - 90th Percentile**



Sacramento County

National Average

# Why?

## The association between paramedic service system hospital offload time and response time

I E Blanchard<sup>1 2</sup>, T S Williamson<sup>3</sup>, B E Hagel<sup>3</sup>, D J Niven<sup>4 3</sup>, D J Lane<sup>5</sup>, S Dean<sup>4 3</sup>, M N Shah<sup>6</sup>, E S Lang<sup>4 3</sup>, C J Doig<sup>4 3</sup>

The influence of ambulance offload time on 30-day risks of death and re-presentation for patients with chest pain

[Luke P Dawson](#),<sup>1, 2, 3</sup> [Emily Andrew](#),<sup>2, 4</sup> [Michael Stephenson](#),<sup>2, 5</sup> [Ziad Nehme](#),<sup>2, 5</sup> [Jason Bloom](#),<sup>2, 3</sup> [Shelley Cox](#),<sup>4</sup> [David Anderson](#),<sup>3, 5</sup> [Jeffrey Lefkovits](#),<sup>1, 2</sup> [Andrew J Taylor](#),<sup>2, 3</sup> [David Kaye](#),<sup>3, 6</sup> [Karen Smith](#),<sup>4, 5, \*</sup> and [Dion Stubbs](#)<sup>2, 3, \*</sup>

## Improved outcomes for emergency department patients whose ambulance off-stretcher time is not delayed

Julia Crilly<sup>1 2</sup>, Gerben Keijzers<sup>1 3</sup>, Vivienne Tippett<sup>4</sup>, John O'Dwyer<sup>5</sup>, James Lind<sup>1</sup>, Nerolie Bost<sup>1</sup>, Marilla O'Dwyer<sup>5</sup>, Sue Shiels<sup>6</sup>, Marianne Wallis<sup>2 7</sup>

Time Sensitive ED Presentations:

Sepsis care...

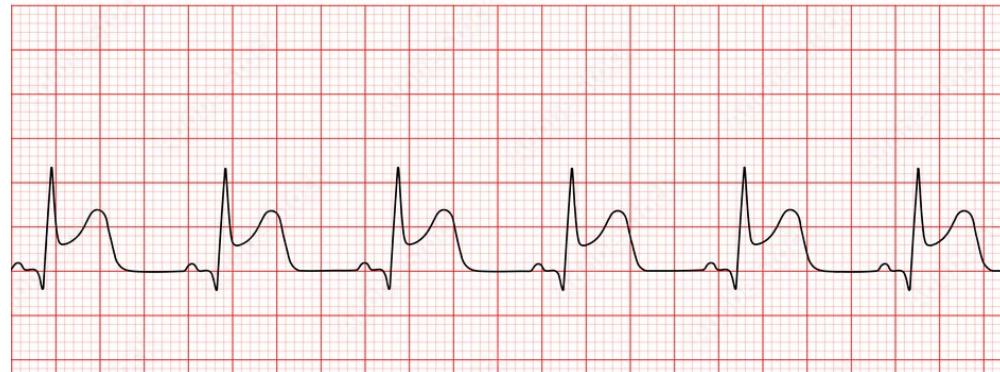


Unrecognized stroke...



Unrecognized heart attack...

ST Elevation Myocardial Infarction (STEMI)





Lack of primary care...



Behavioral health and substance abuse...



Inappropriate ED use...



Lack of discharge destinations...



Homelessness...



EMS Providers

Public Health

Hospital Systems

APOT

County Leadership

Community Agencies

