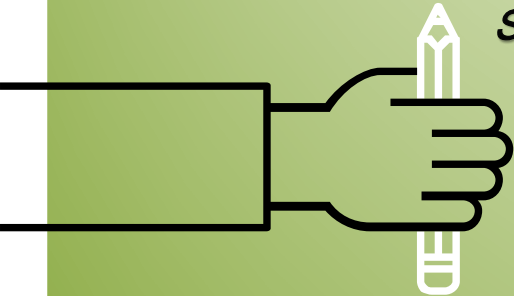
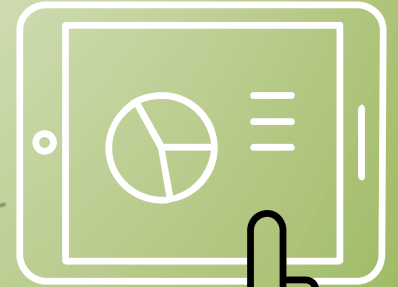
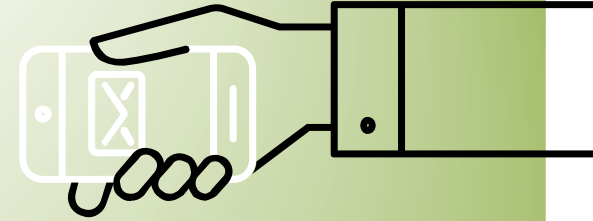
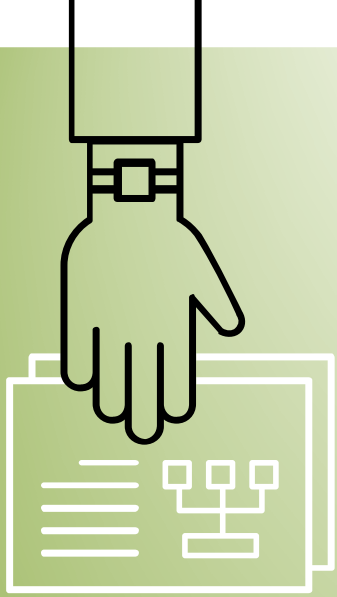


# Sacramento County Healthy Partners

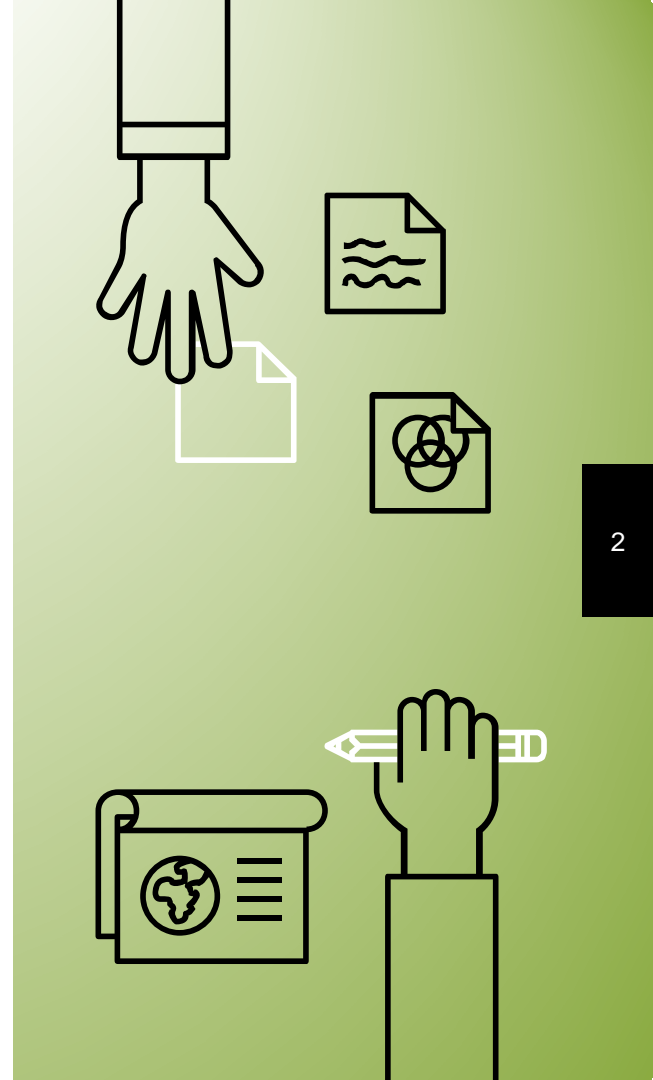
Marissa Steiner,  
*Sacramento County Healthy Partners Administrator*

**AMM**  
ADVANCED MEDICAL MANAGEMENT, INC.



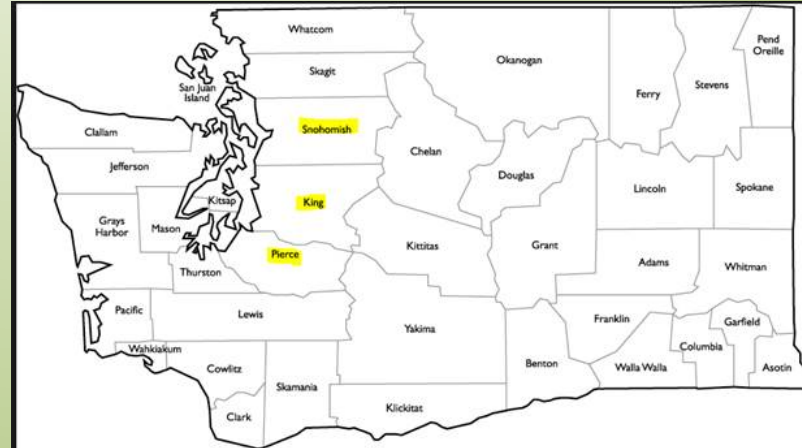
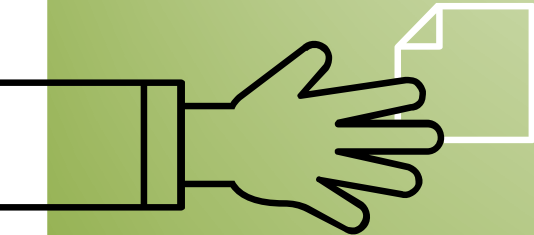
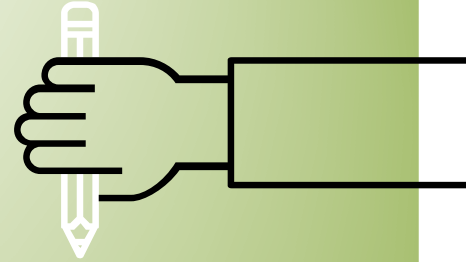
# What We Do

Advanced Medical Management serves as the Management Services Organization (MSO) for Sacramento County's Healthy Partners Program.



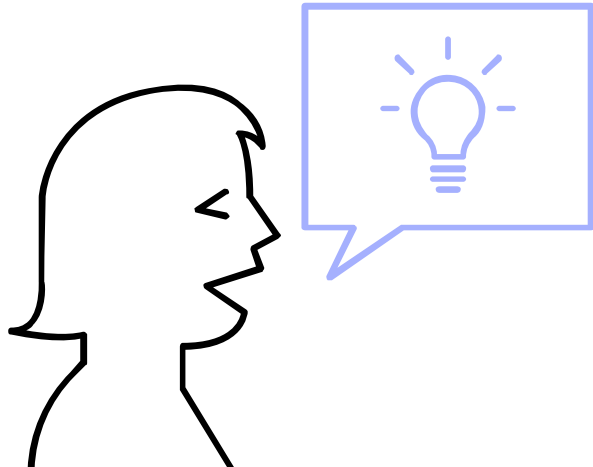


# Network Expansion



The above map was generated by AMM's Contracting Team as an illustration for another client IPA that was seeking to build their specialty network around their PCP network.

# Specialists of Interest:



- Cardiology
- Neurology
- Urology
- Specialty Imaging: Angiograms, MRIs, EKGs
- Alternate Eye Institutes
- Ortho Surgery

## Contracting Recruitment Process

- 1. Reach out to providers recommended by contracted clinics.*
- 2. Send literature to providers about Healthy Partners Program via fax and/or e-mail.*
- 3. Cold Calling Providers in the area to explain reimbursement structure and determine if they are interested in contracting with the program.*

# Questions?

