

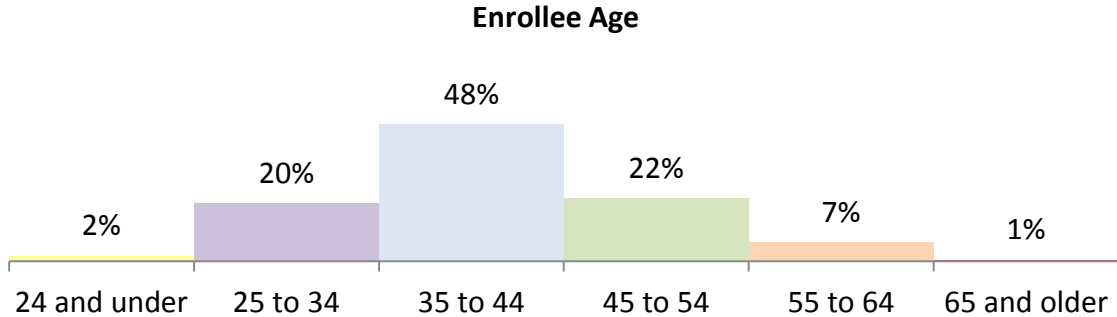
**Healthy Partners**  
**Fiscal Year 2017/18 YTD**  
**May 7, 2018**

Data for the period of **July 1, 2017 – April 30, 2018** is depicted on the following charts.

---

**Age of Enrollees**

Nearly half of all enrollees are between the ages of 35 and 44. Almost all enrollees are between 25 years – 54 years of age.

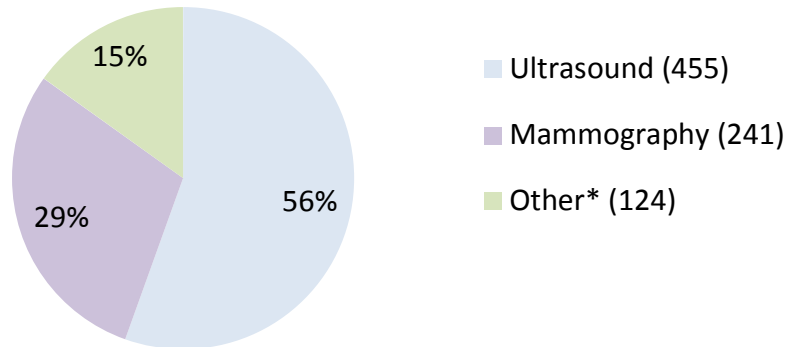


On February 6, 2018, the Board of Supervisors voted to increase the enrollment cap from 3,000 to 4,000 members and eliminated the upper age limit. Immediately after the hearing, staff changed the criteria, contacted individuals who were formerly disenrolled and enrolled if still meeting criteria. Staff also worked through and exhausted the wait list. As of April 30, 2018, enrollment was 3,386 and there were 17 individuals enrolled over 64 years of age.

**Diagnostic and Specialty Services**

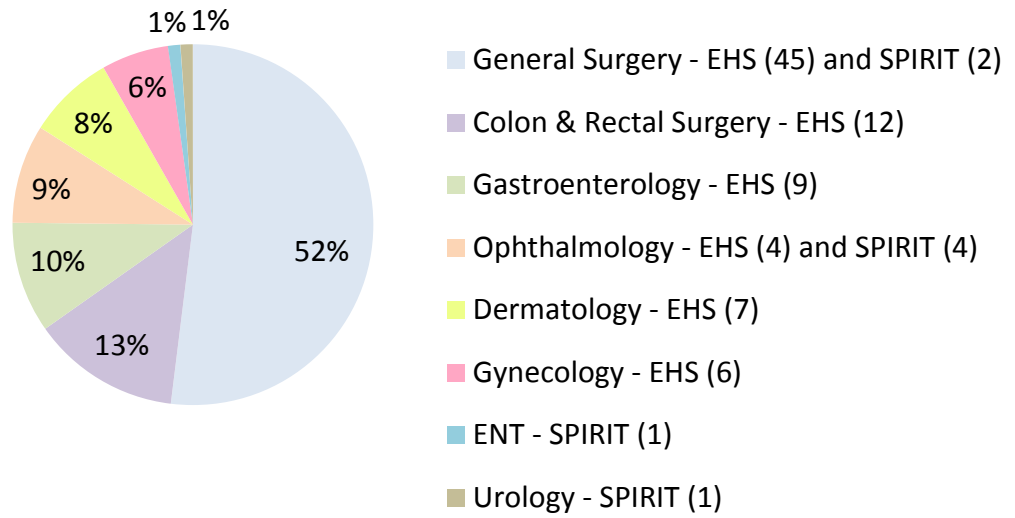
Data reported remains consistent with last fiscal year’s experience, with the exception of specialty services.

**Employee Health Systems (EHS) Diagnostic Services**  
**Total Services = 820**



*\*Other includes: CT, MRI, Echo, Radiology, Bone Density, and Fluoroscopy.*

**Surgeries**  
**Total Surgeries = 91**



**Outpatient Specialty by Provider**  
**Total Services = 1,246**

Type	EHS	SPIRIT	UCD
Physical Therapy	442		
Dermatology	111		
Pathology	111		
Colon & Rectal Surgery	108		
Optometry	13	101	
Ophthalmology	99	7	
Gastroenterology	78		
Gynecology	74	2	
Musculoskeletal			31
Rheumatology			27
Occupational Therapy	26		
Nephrology			6
Pulmonology		3	
General Surgery		2	
Urology		2	
Ear, Nose and Throat		1	
Retinal		1	
Orthopedic		1	
<b>Total</b>	<b>1,062 (85%)</b>	<b>120 (10%)</b>	<b>64 (5%)</b>

<b>Comparison Fiscal Year 2016/17 and FY 2017/18 YTD</b>			
	FY 16/17 (12 month)	FY 17/18 (10 month period) 7/1/17- 4/30/18	Comparison to Last Fiscal Year: <i>Additional services delivered YTD</i>
Diagnostics	1,606	820	N/A
Procedures/Surgeries	10	91	81
Specialty	334	1,246	912

Changes this fiscal year:

- Specialty changes this fiscal year included the addition of Physical Therapy and Vision Services. EHS also phased in outpatient procedures/surgeries after working out agreements with three ambulatory care surgeries centers. This has greatly enhanced availability of much-needed services.
- Employee Health Systems will move out of the local market. Contracted services will transition to Advanced Medical Management. The target date for implementation is June 1, 2018.