



Methamphetamine Coalition

First Step Communities will create interim housing and emergency shelter for people experiencing homelessness. Here they will live in safety and dignity, receive the services they require, and take a first-step away from homelessness toward self-sufficiency and permanent housing.



Methamphetamine Coalition

Winter Sanctuary Shelter – 100 clients/night

- meals,
- shelter,
- services,
- Expect new plan for coming season.

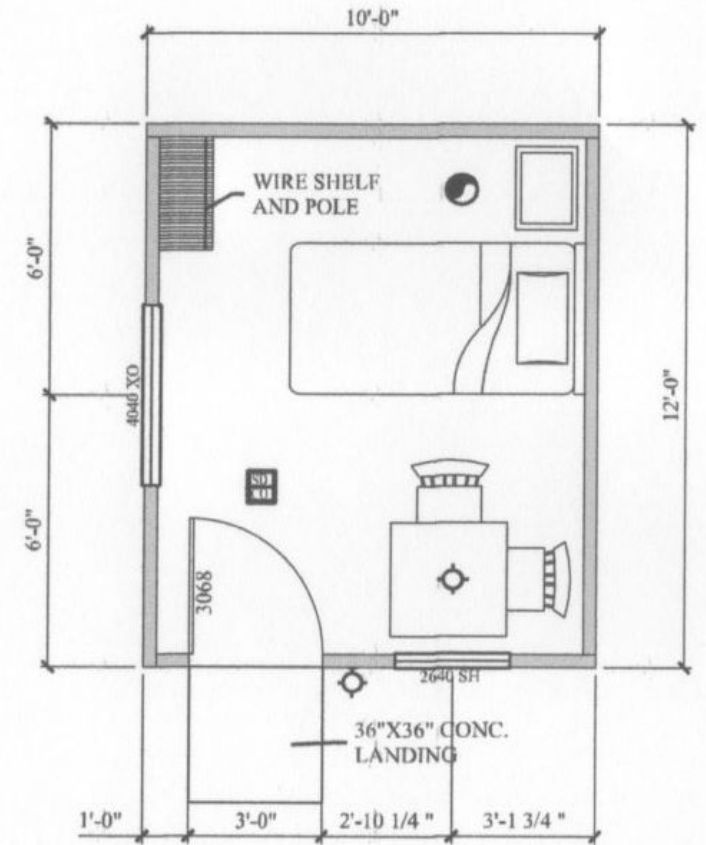


Methamphetamine Coalition

North A Street Rehousing Program

- Community outreach,
- Case management,
- Healthcare referrals, legal services,
- Sanitation Program.

Energy Efficient Sleeping Cabins



a bridge out of homelessness

The Community Center & Medical Clinic



a bridge out of homelessness



Methamphetamine Coalition

Do we see a meth problem in the homeless community?

Yes, and we would label it an *epidemic!*



Methamphetamine Coalition

- **Observed behaviors:**
 - **Talking to themselves...Screaming...**
 - **Loss of contact with others**
 - **Repetitious behaviors...varying degrees**
 - **Anxiety...Easily Angered**
 - **Inability to interact with others**
 - **Violence**
 - **Lack of focus...stops case management in tracks**



Methamphetamine Coalition

- **Case Management finds:**
 - Unable to take the steps required to move forward.
 - Many are struggling with mental health issues and meth use.
 - Often prescribed drugs are replaced with meth use.
 - Will often stay where they feel safe...often not safe.
 - Predators use meth used as a lever to get users EFT cards, money, etc. from users.



Methamphetamine Coalition

- **Case Management recommends:**
 - **Programs that will combine AOD and mental health.**
 - **Reduction of waiting phase for AOD treatment**
 - **one week clean does not work.**
 - **Better understanding of *harm reduction* for meth use.**
 - **Increased access to doctors for co-occurring issues**
 - **Seminars for case managers on co-occurring issues**



Methamphetamine Coalition

- **Case Management recommends:**
 - **Increased program capacity**
 - **More AOD, More mental health, More Co-occurring Pgms.**
 - **Intake in our community**



Methamphetamine Coalition

Stephen Watters, Executive Director

First Step Communities

916.769.8877

swatters@firststepcommunities.org