

# Homeless Response System

## Homeless Response System Interventions

### PREVENT HOMELESSNESS



#### TARGETED PREVENTION

One-time and short-term prevention assistance for highest risk

#### DIVERSION

Immediate problem-solving and resources to avoid shelter

### RESPOND TO HOMELESSNESS



#### STREET OUTREACH

Individualized engagement and connection to housing assistance and services

#### TEMPORARY HOUSING

Emergency shelter, transitional housing, interim housing

### END HOMELESSNESS



#### SHORT/MEDIUM-TERM REHOUSING

Individualized housing search/placement and time-limited financial assistance and stabilization services

#### PERMANENT HOUSING

Permanent supportive housing and other dedicated permanent housing assistance with ongoing services

# How to Bend the Curve

Estimated **ANNUAL** Number of People Who Experience **Literal Homelessness\***  
in Sacramento = **16,500 to 20,000**

\*Represents those in emergency/temporary shelter or unsheltered

## Business as Usual

Emphasizes crisis response once a person becomes homeless



Leads to increasing need for shelter and other crisis responses and less capacity to prevent or quickly end homelessness for people.

## Transformed System

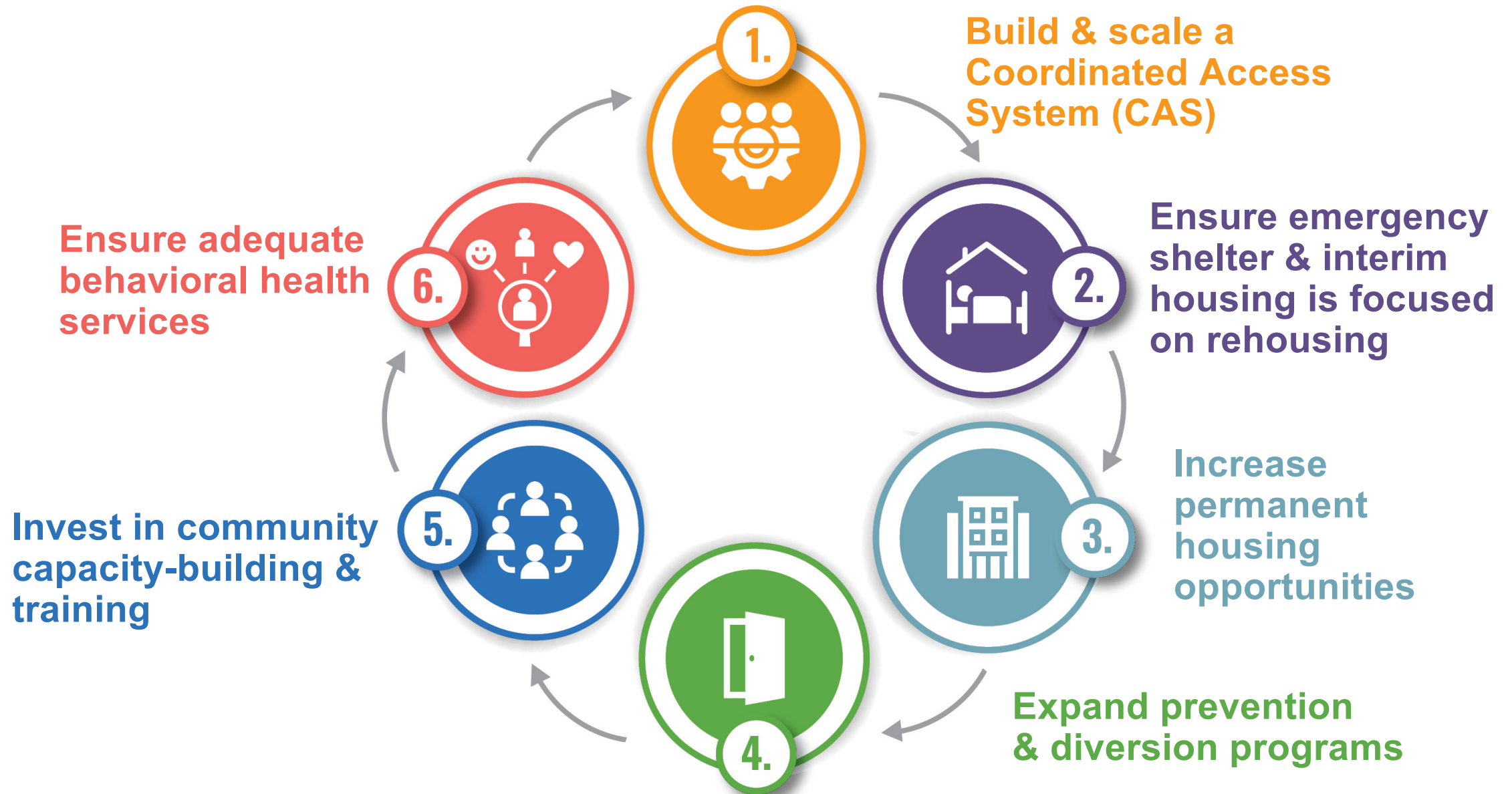
Emphasizes targeted prevention, diversion, rehousing and permanent housing assistance, reducing need for crisis services



Leads to less people experiencing homelessness and more people receiving the help they need to quickly end their homelessness and remain housed.

Eliminates or significantly reduces the need for additional emergency shelter capacity.

# Local Homeless Action Plan Strategies



# Creating a Transformed System in Sacramento

END HOMELESSNESS

Current capacity for **Rehousing Assistance:**



**76%**  
of need met

**24%**  
**(645 households)**  
with unmet needs

Key improvements are needed to ensure efficient and effective rehousing assistance including landlord engagement, tenant retention, increased unit availability, intensive case management, and full incorporation into the community-wide coordinated access system.

To close the gap, Sacramento needs at least an additional:



**29 full-time employees**  
who provide individualized placement/  
stabilization supports with financial assistance

Annual financial rehousing assistance is also needed and to be determined.

Current capacity for **Permanent Supportive Housing:**



**46%**  
of need met

**54%**  
**(3,000 households)**  
with unmet needs

To close the gap, Sacramento needs at least an additional:



**4,100–5,000**  
permanent supportive housing units



**1,600-2,000**  
permanent housing assistance placements  
with ongoing services annually

For Permanent Supportive Housing, efforts are needed to increase positive turn-over and openings among current units, and increase the overall number of units funded with homeless assistance and other resources to meet the needs of people who are chronically homeless. For others who are disabled and homeless, the need for rehousing supports and affordable, supportive housing options cannot be met by the homeless crisis response system alone. Cross sector collaboration to develop sustainable housing and service supports for people with needs beyond housing are needed.